



# 42' Home Designs



# President's Message



Since CountryWide opened its doors in 2005, we have always prided ourselves on looking ahead, trying to anticipate the lifecycle needs of our communities and building homes people love to live in.

That is what excites me and our team at CountryWide about Glen Abbey Encore.

Every house we build, including the one you are looking at now, is built on a foundation of great people, imbued with a spirit of excellence, producing a quality product. Going above and beyond is our baseline standard.

On that foundation, we build your home using just four tools:

Carefully chosen land. We work hard to find the best locations in which to live, so the people in our communities grow successfully and happily in the lifestyle they wish to lead.

Fresh, focused and appealing designs. It's not enough for us to build luxuriously, our homes - your home - must be elegant, designed for today, and stand out visually and ergonomically.

Workmanship. We take great pride in our work and we have great respect for your investment in us. That's why your home is built above provincial code standards and comes with Energy Star Certification.

Service. The expectation that your needs are always met with professionalism, precision, and empathy so that your experience is service unmatched from delivery to warranty expirations and beyond.

CountryWide is renowned for creating among the finest and desirable homes in the GTA. These homes have built our reputation. And we look forward to building one especially for you.

Welcome to CountryWide's Glen Abbey Encore.

**ANGELO DE GASPERIS,**  
**PRESIDENT COUNTRYWIDE HOMES**





# Let's hear it for Glen Abbey Encore

A new luxury development in the winsome town of Oakville.  
It's a community replete with authentic character,  
modern amenities, and a lifestyle you'll adore.

Set between Bronte and Upper Middle Road, Glen Abbey Encore puts you close to top-rated public and private schools, amazing restaurants, and some truly exceptional local flavour. The QEW and 407 are mere minutes away and act as your channel to the rest of the GTA.

A true return to what makes Oakville great, Glen Abbey Encore is here to stay.



# THE DONESSLE

42' SINGLES



ELEVATION C 2,633 SQ.FT.



ELEVATION A 2,632 SQ.FT.



ELEVATION B 2,627 SQ.FT.



Visit [countrywidehomes.ca](https://countrywidehomes.ca) to view options and elevation B & C floorplans.

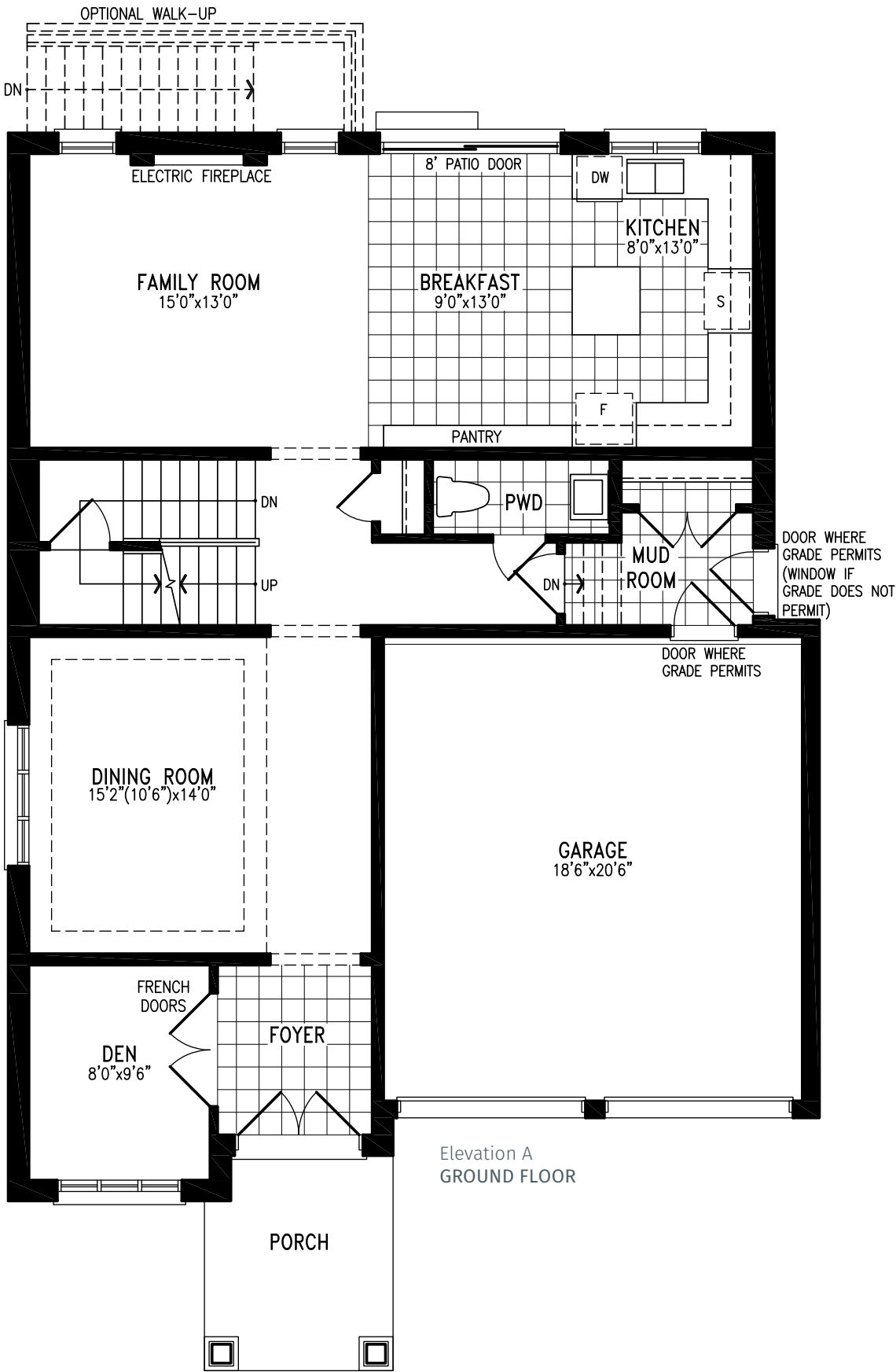
THE DONESSLE BG42-1 prices & specifications subject to change without notice. Useable square footage may vary from that stated herein. Artists concept only E.&O.E. © September 2020 CountryWide Homes. All rights reserved.



**COUNTRYWIDE**

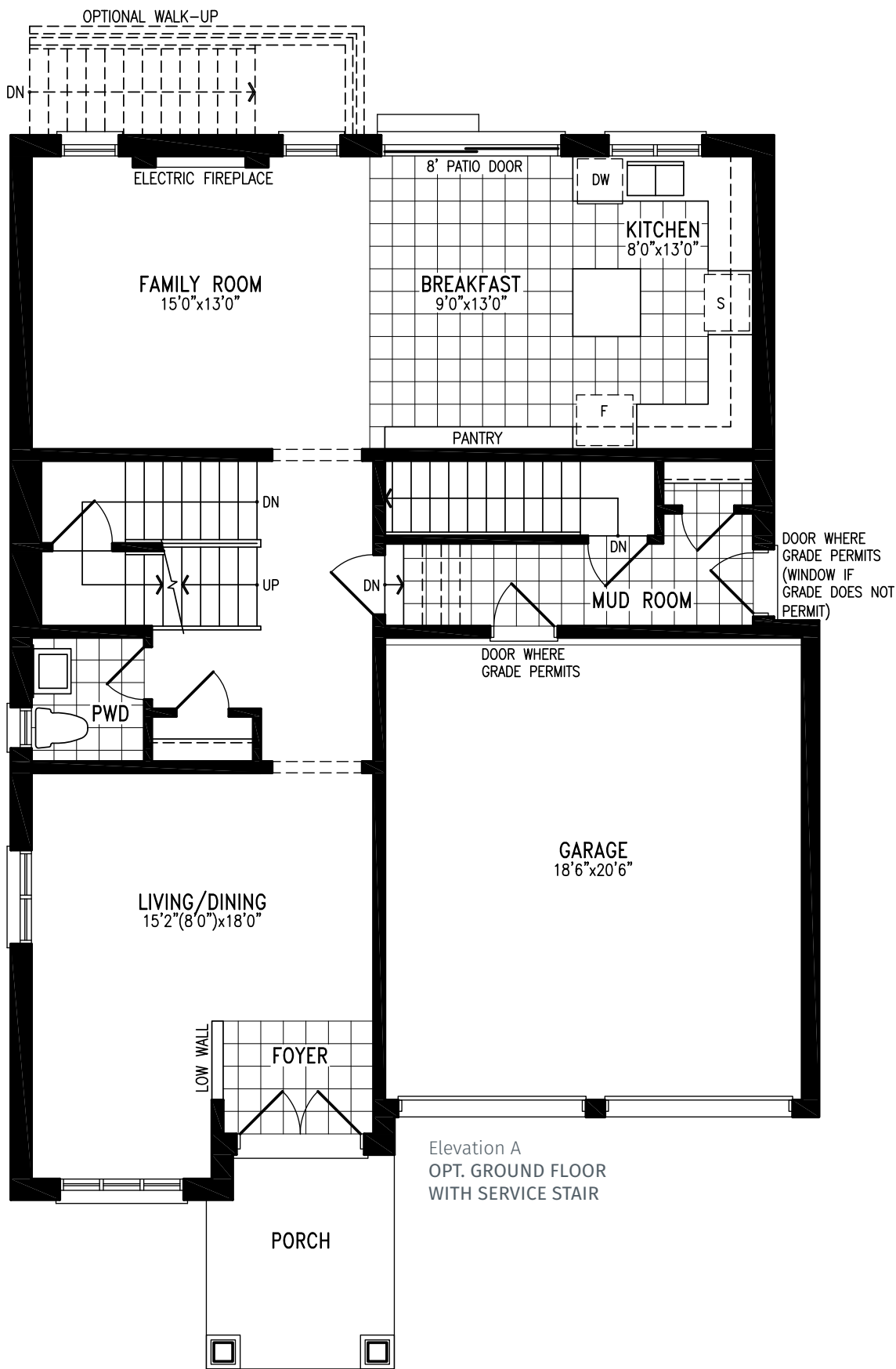
# THE DONESSLE

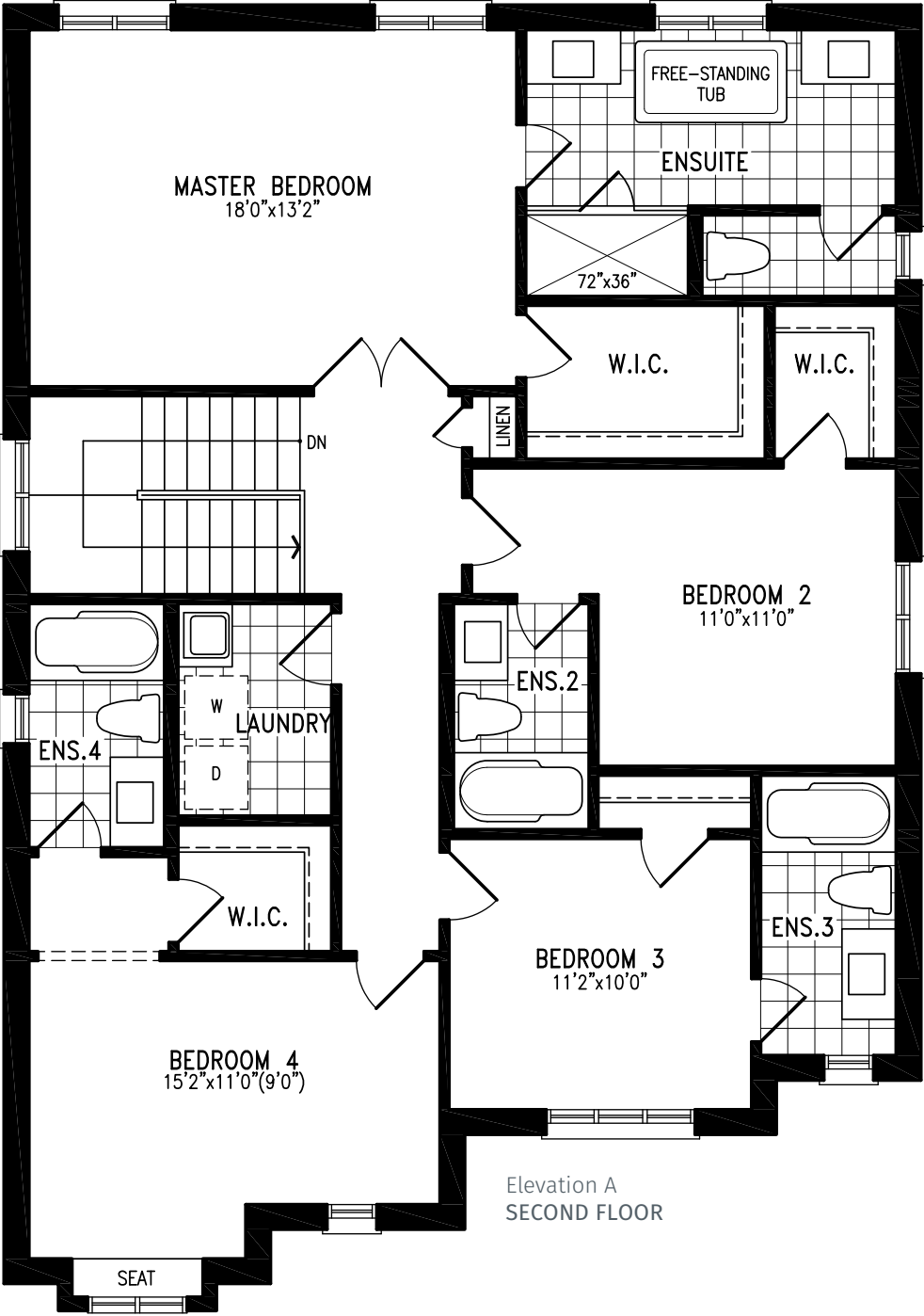
ELEVATION A 2,632 SQ.FT. | ELEVATION B 2,627 SQ.FT.  
ELEVATION C 2,633 SQ.FT.



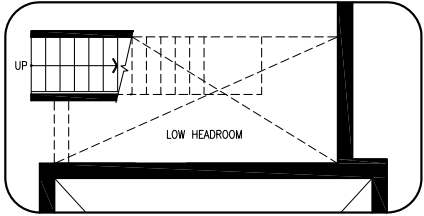
# THE DONESSLE

ELEVATION A 2,632 SQ.FT. | ELEVATION B 2,627 SQ.FT.  
ELEVATION C 2,633 SQ.FT.

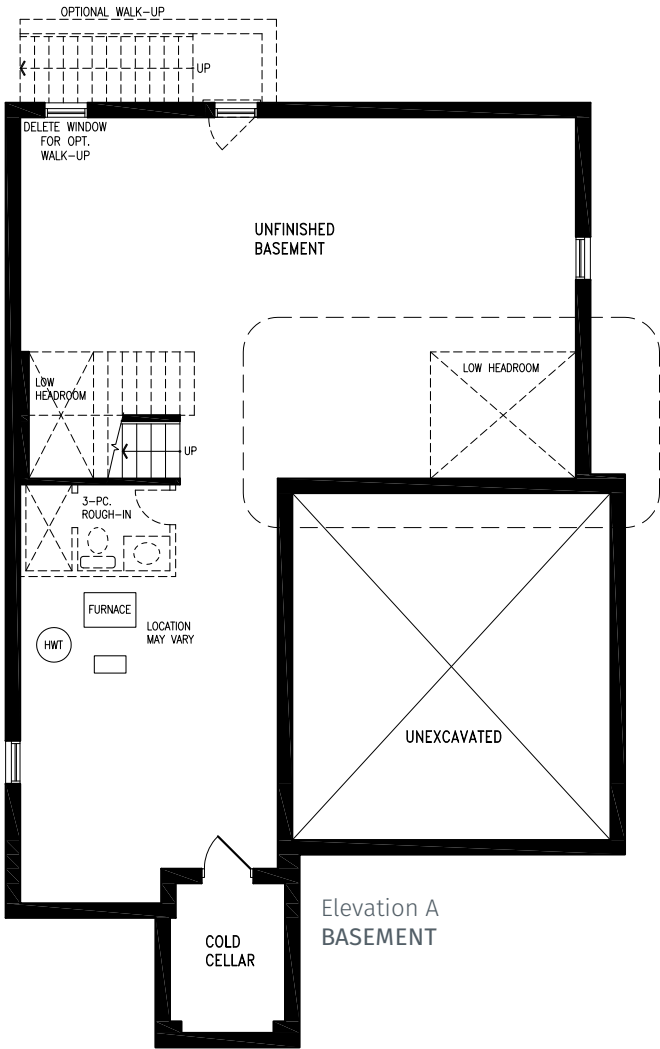




Elevation A  
SECOND FLOOR



Elevation A & B & C  
OPT. BASEMENT WITH  
OPT. SERVICE STAIR



Elevation A  
BASEMENT



# THE SEATON

42' SINGLES



Visit [countrywidehomes.ca](https://countrywidehomes.ca) to view options and elevation B & C floorplans.

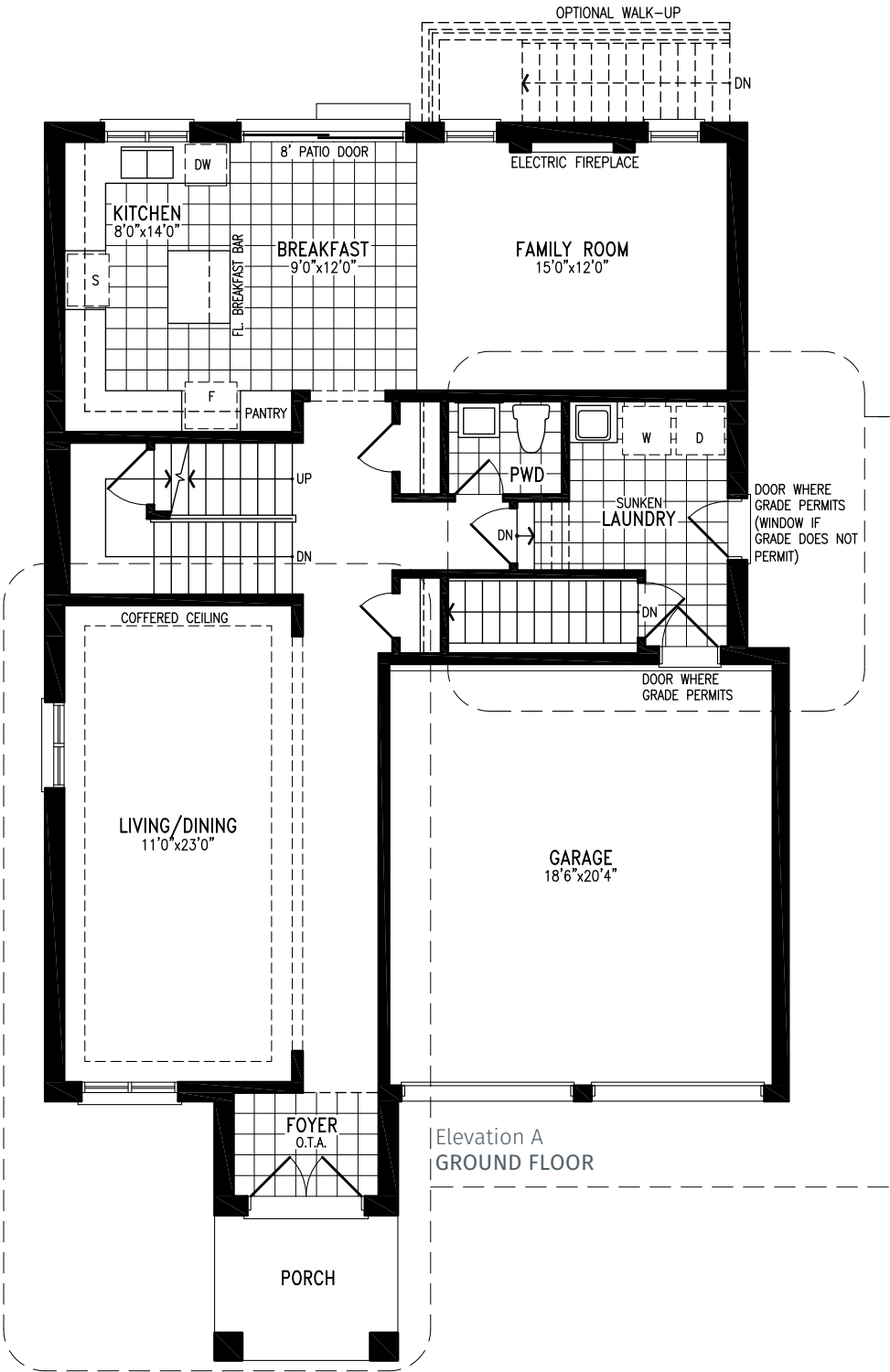
THE SEATON BG42-2 prices & specifications subject to change without notice. Useable square footage may vary from that stated herein. Artists concept only E.&O.E. © September 2020 CountryWide Homes. All rights reserved.



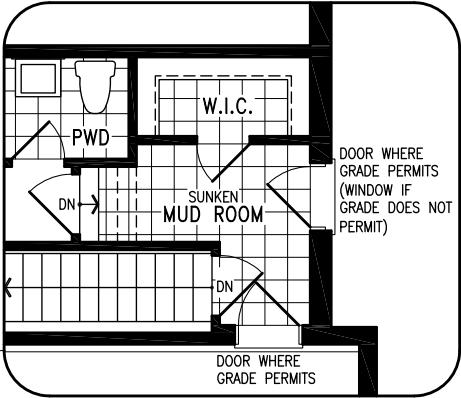
**COUNTRYWIDE**

# THE SEATON

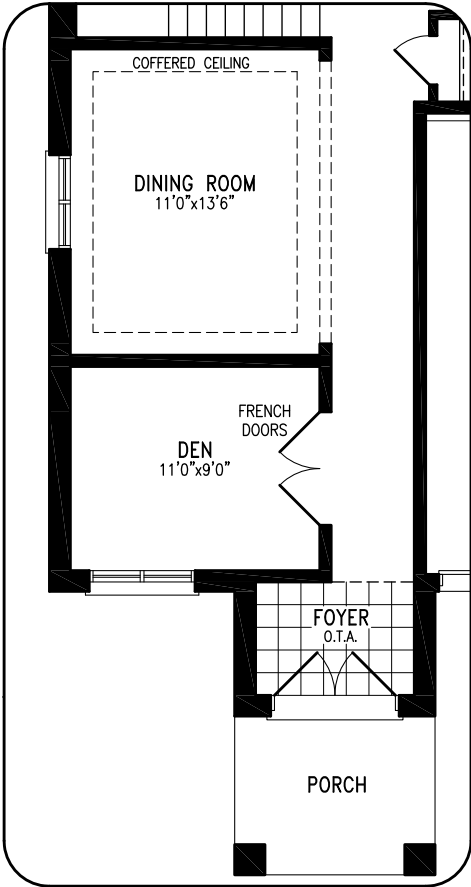
ELEVATION A 2,860 SQ.FT. | ELEVATION B 2,882 SQ.FT.  
ELEVATION C 2,851 SQ.FT.



Elevation A  
GROUND FLOOR



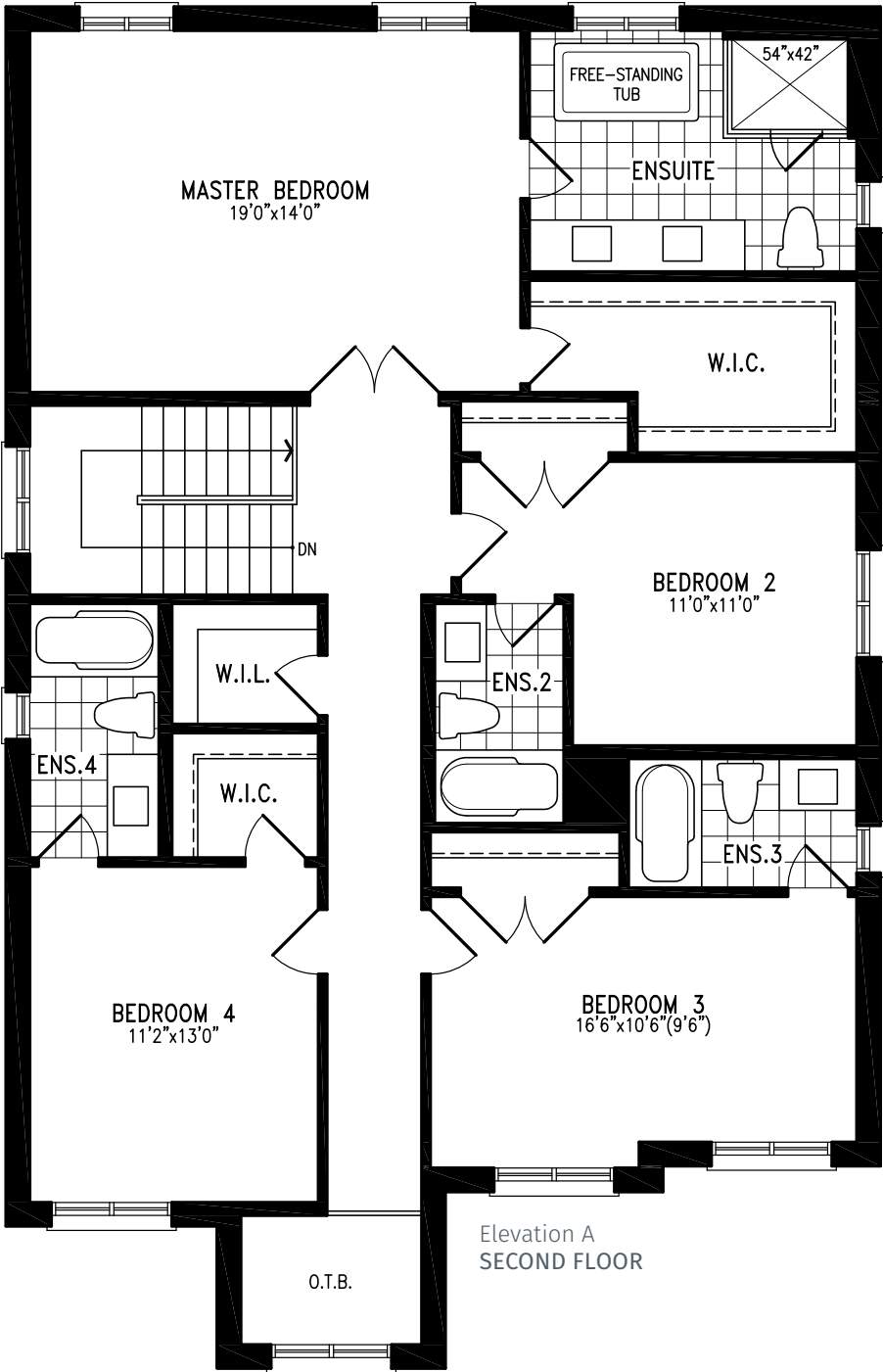
Elevation A  
OPT. MUDROOM WITH  
OPT. SECOND FLOOR LAUNDRY

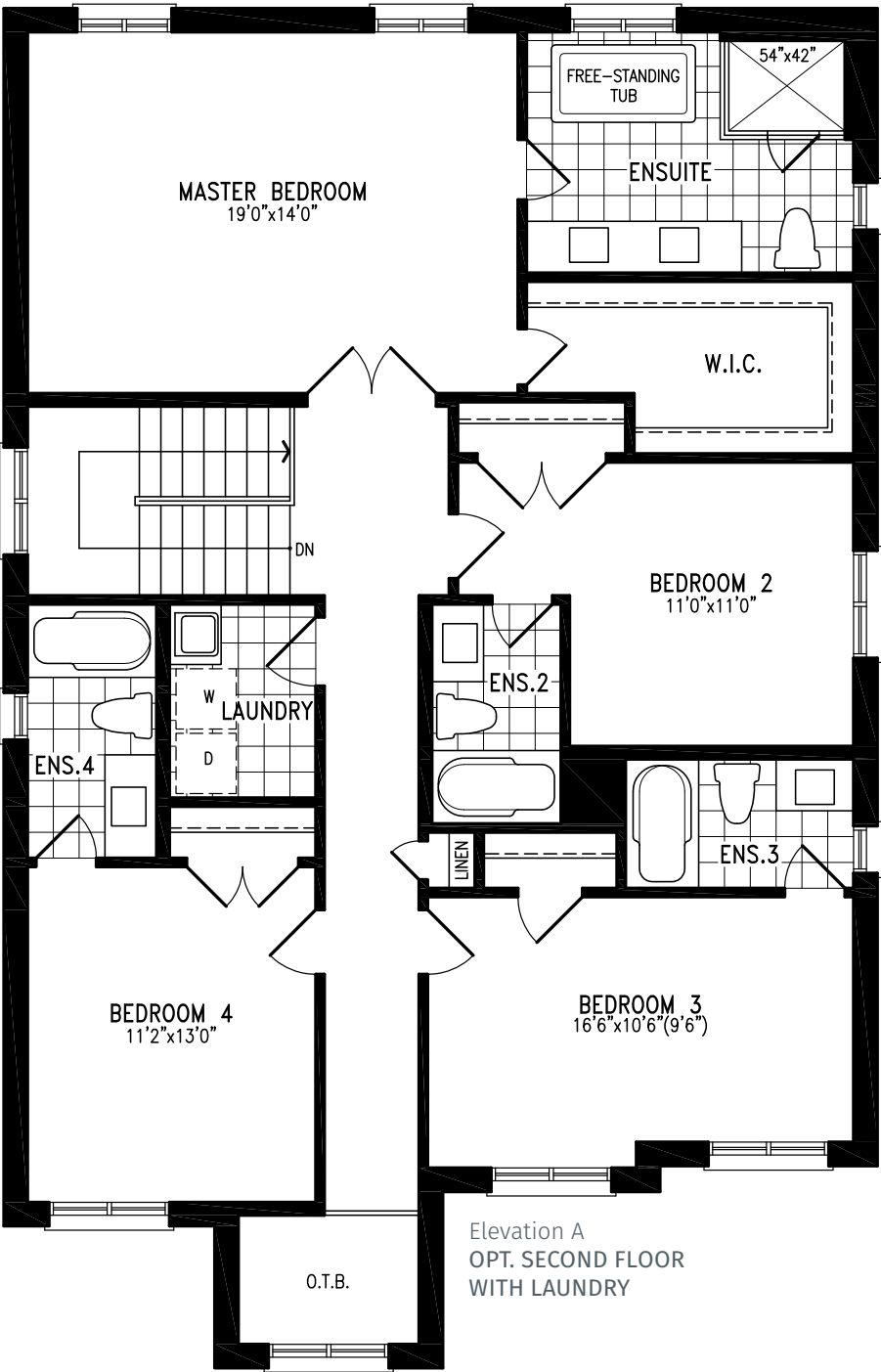


Elevation A  
OPT. DINING ROOM / DEN

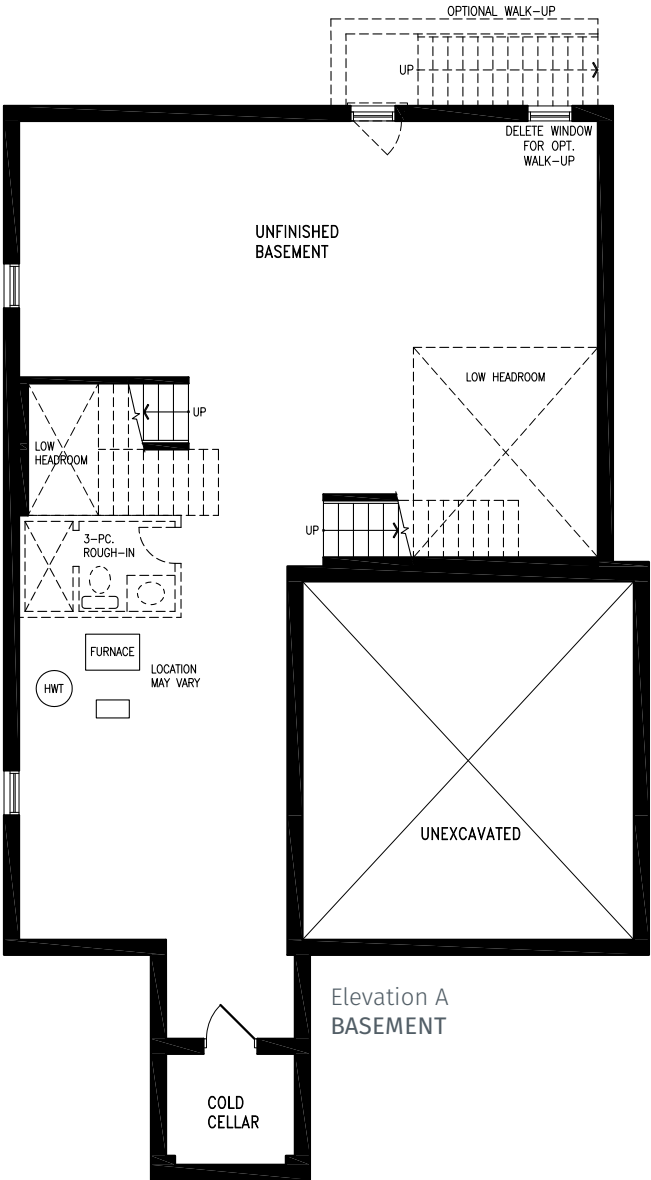
# THE SEATON

ELEVATION A 2,860 SQ.FT. | ELEVATION B 2,882 SQ.FT.  
ELEVATION C 2,851 SQ.FT.





Elevation A  
OPT. SECOND FLOOR  
WITH LAUNDRY



Elevation A  
BASEMENT



# THE BRENTWOOD

42' SINGLES



Visit [countrywidehomes.ca](https://countrywidehomes.ca) to view options and elevation B & C floorplans.

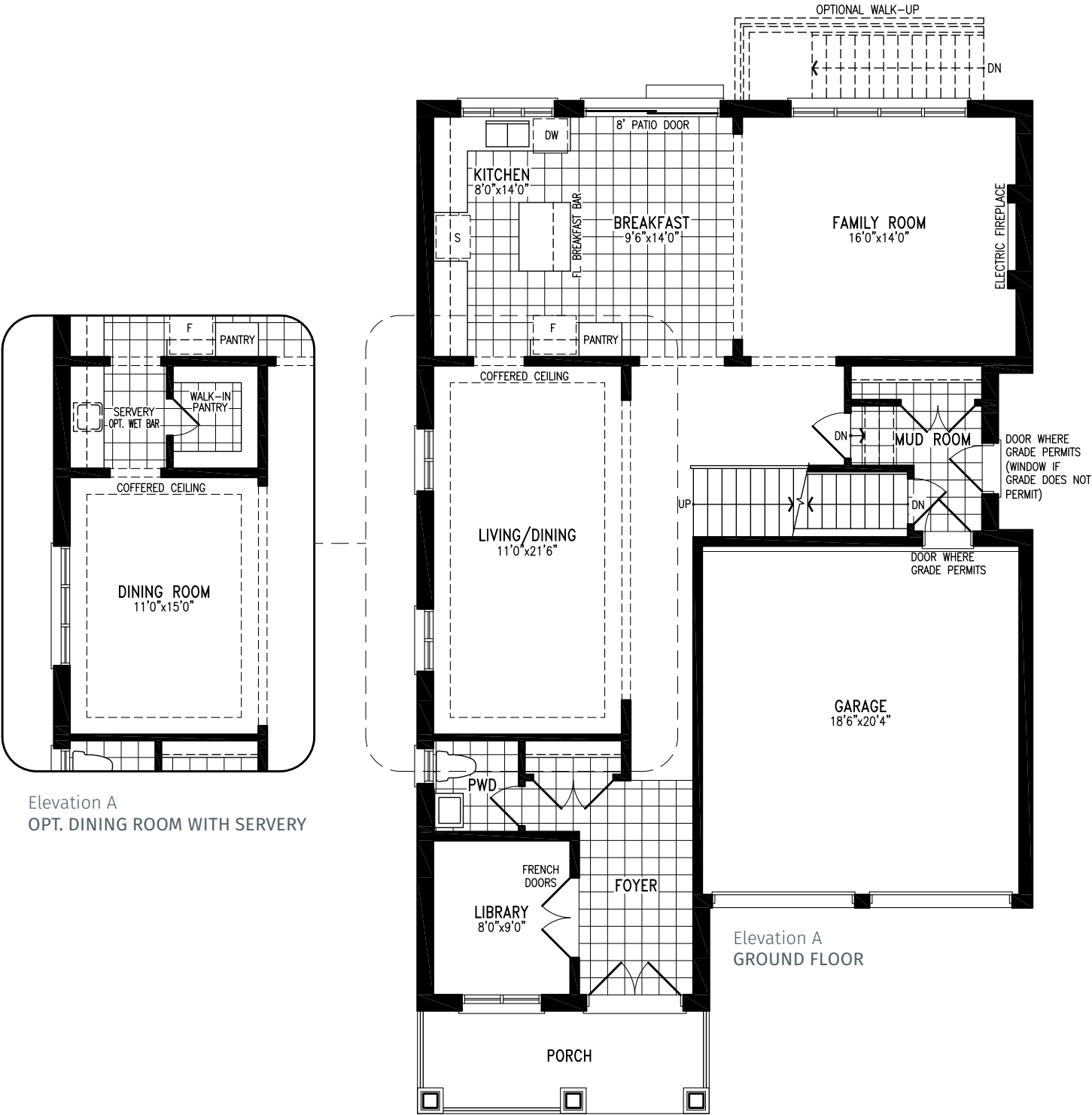
THE BRENTWOOD BG42-3 prices & specifications subject to change without notice. Useable square footage may vary from that stated herein. Artists concept only E.&O.E. © September 2020 CountryWide Homes. All rights reserved.



**COUNTRYWIDE**

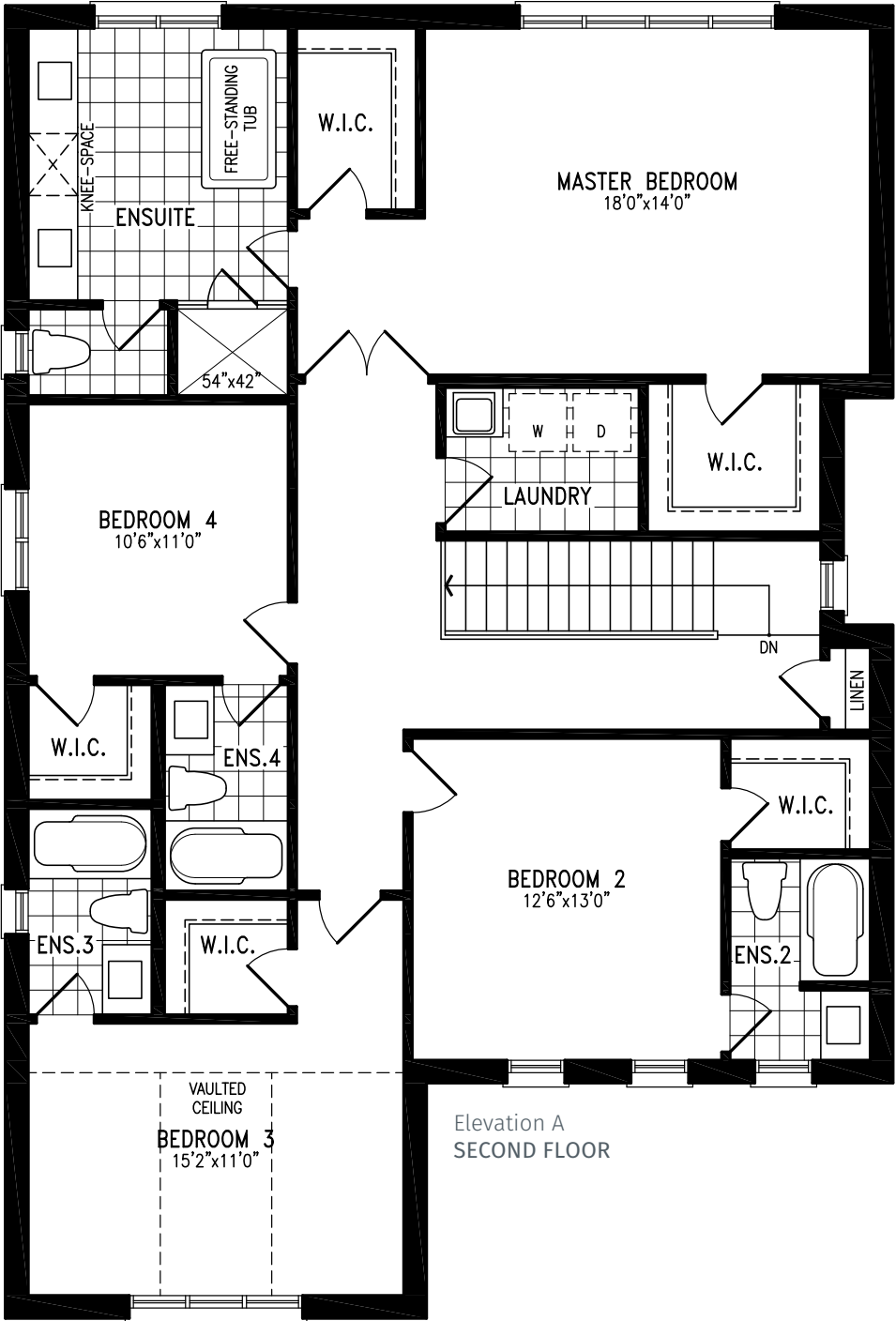
# THE BRENTWOOD

ELEVATION A 3,062 SQ.FT. | ELEVATION B 3,072 SQ.FT.  
ELEVATION C 3,075 SQ.FT.



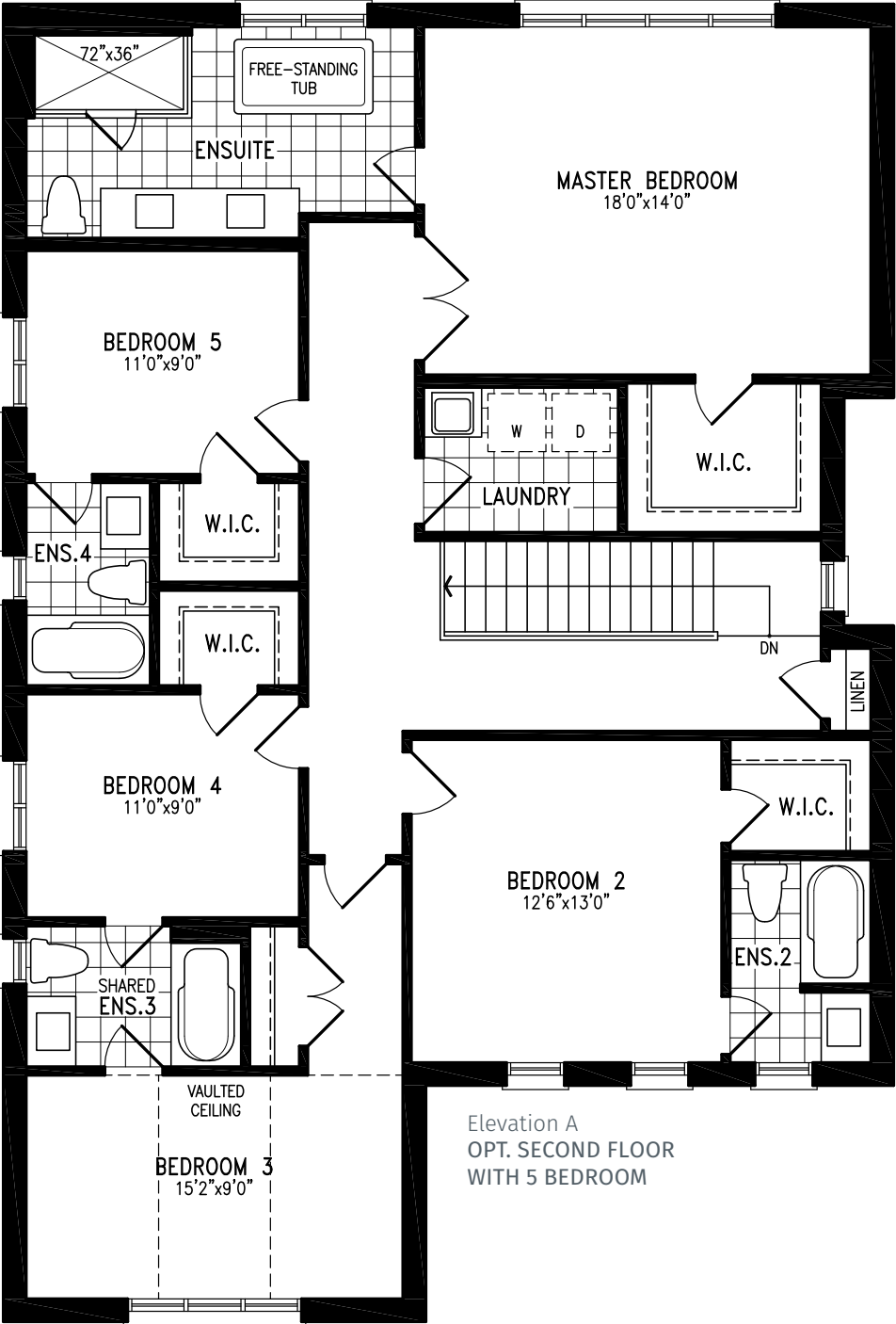
# THE BRENTWOOD

ELEVATION A 3,062 SQ.FT. | ELEVATION B 3,072 SQ.FT.  
ELEVATION C 3,075 SQ.FT.

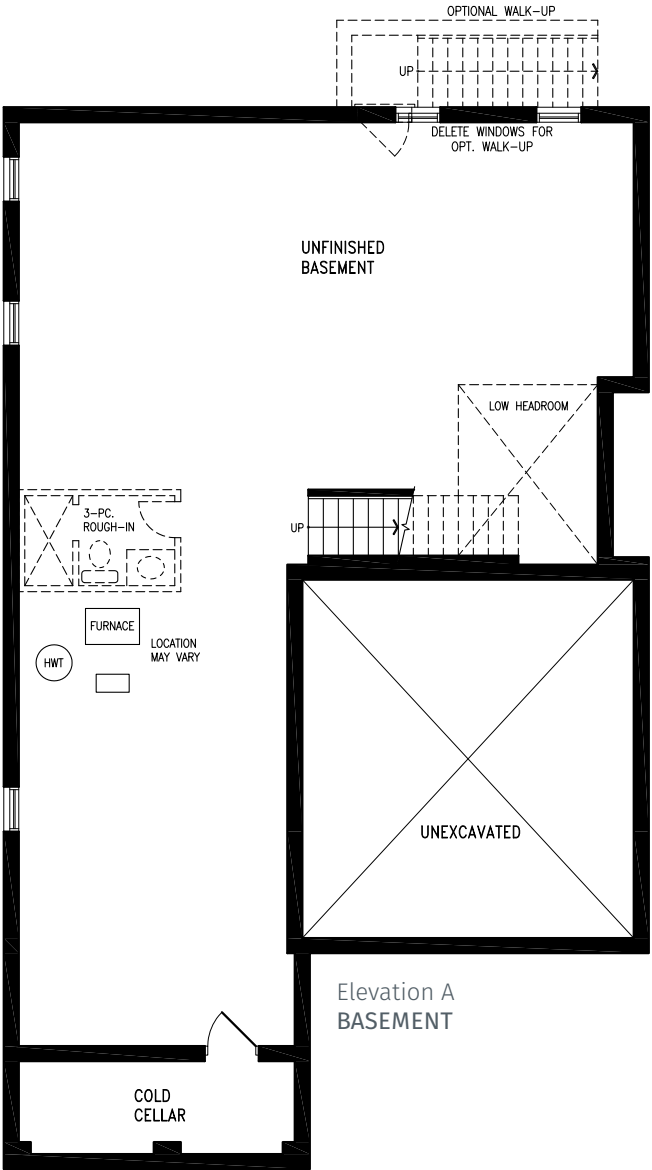


Elevation A  
SECOND FLOOR





Elevation A  
OPT. SECOND FLOOR  
WITH 5 BEDROOM



Elevation A  
BASEMENT



# THE POPLAR

42' SINGLES



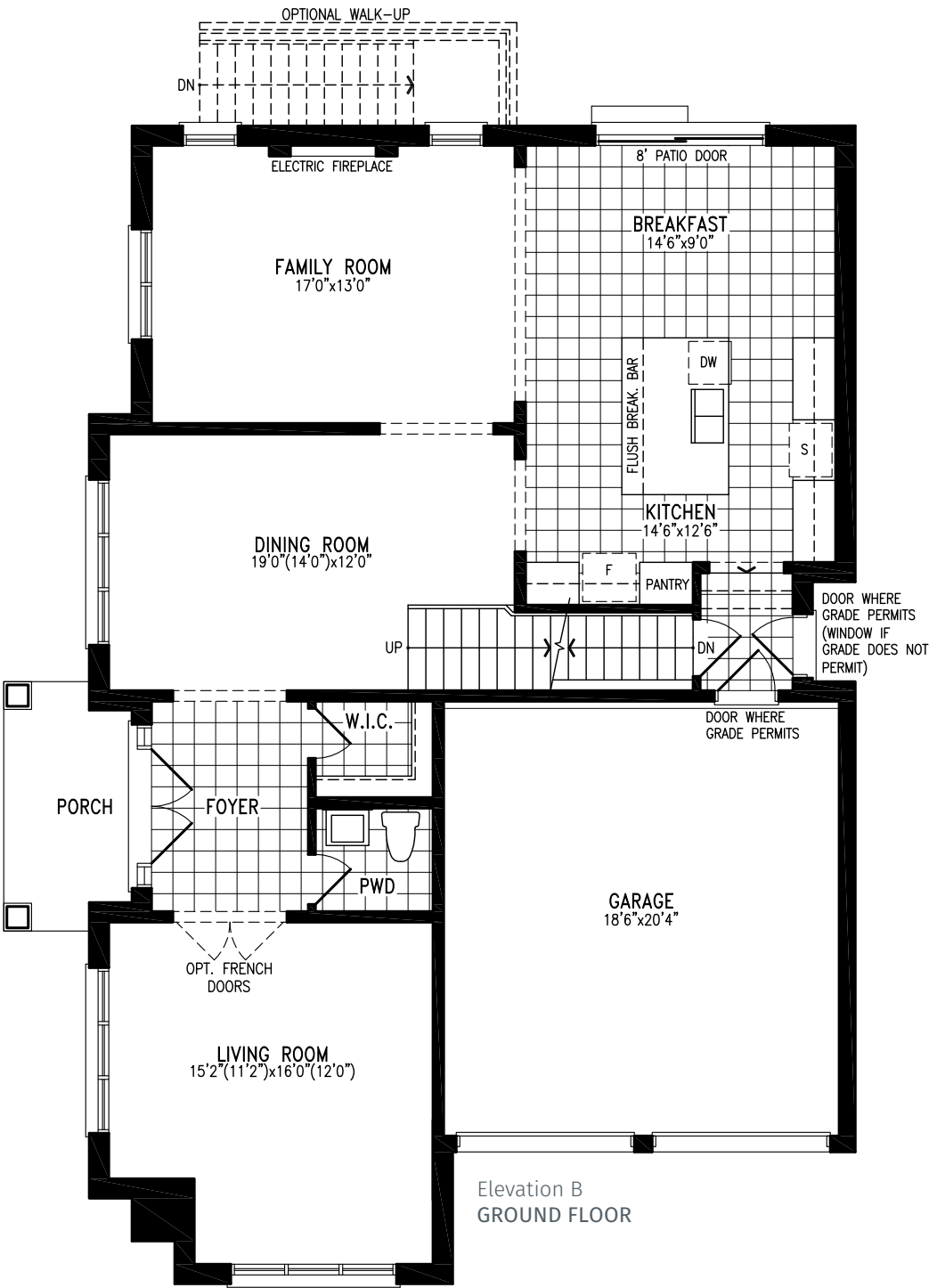
Visit [countrywidehomes.ca](https://countrywidehomes.ca) to view options and elevation B floorplans.

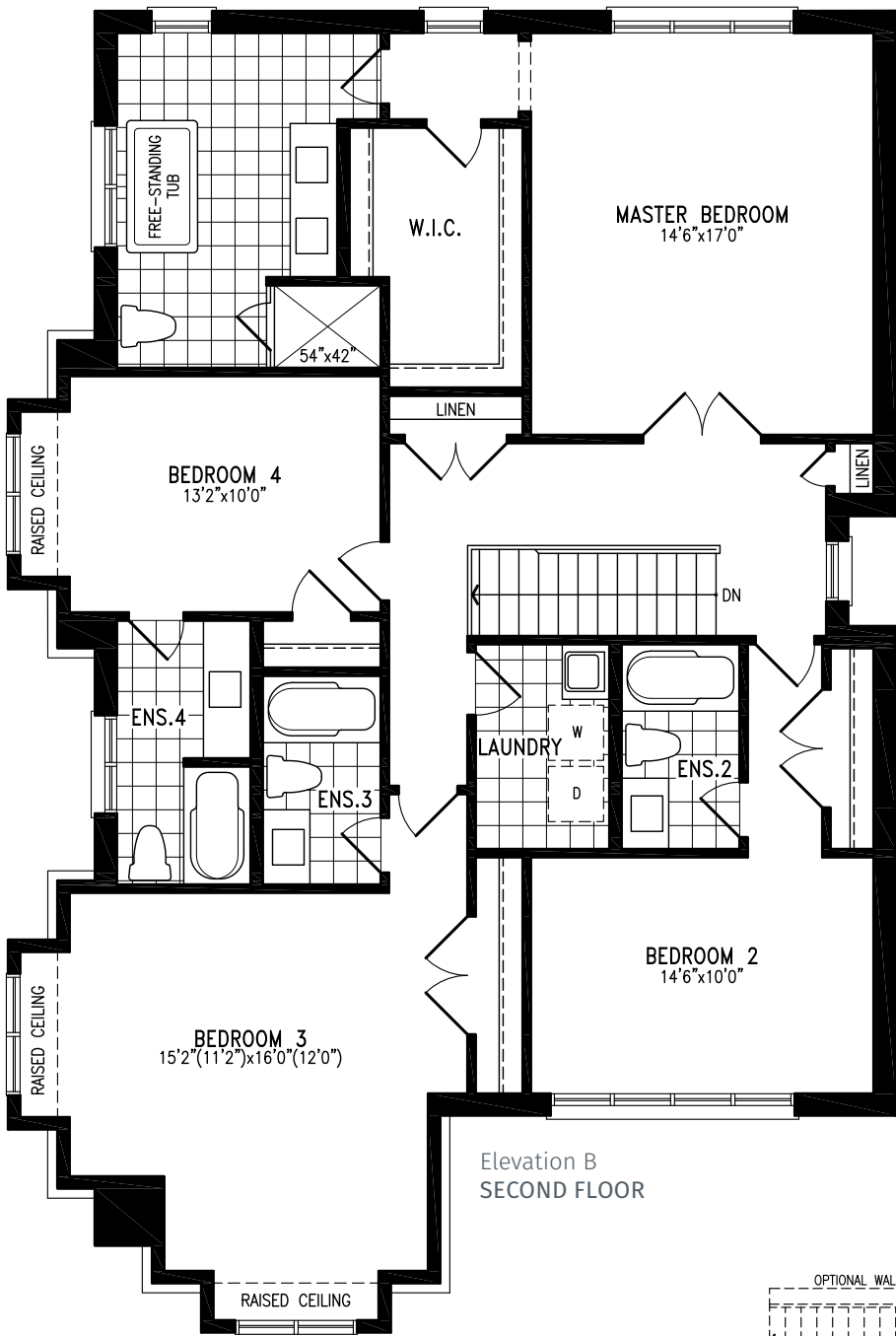
THE POPLAR BG42-4C prices & specifications subject to change without notice. Useable square footage may vary from that stated herein. Artists concept only E.&O.E. © September 2020 CountryWide Homes. All rights reserved.



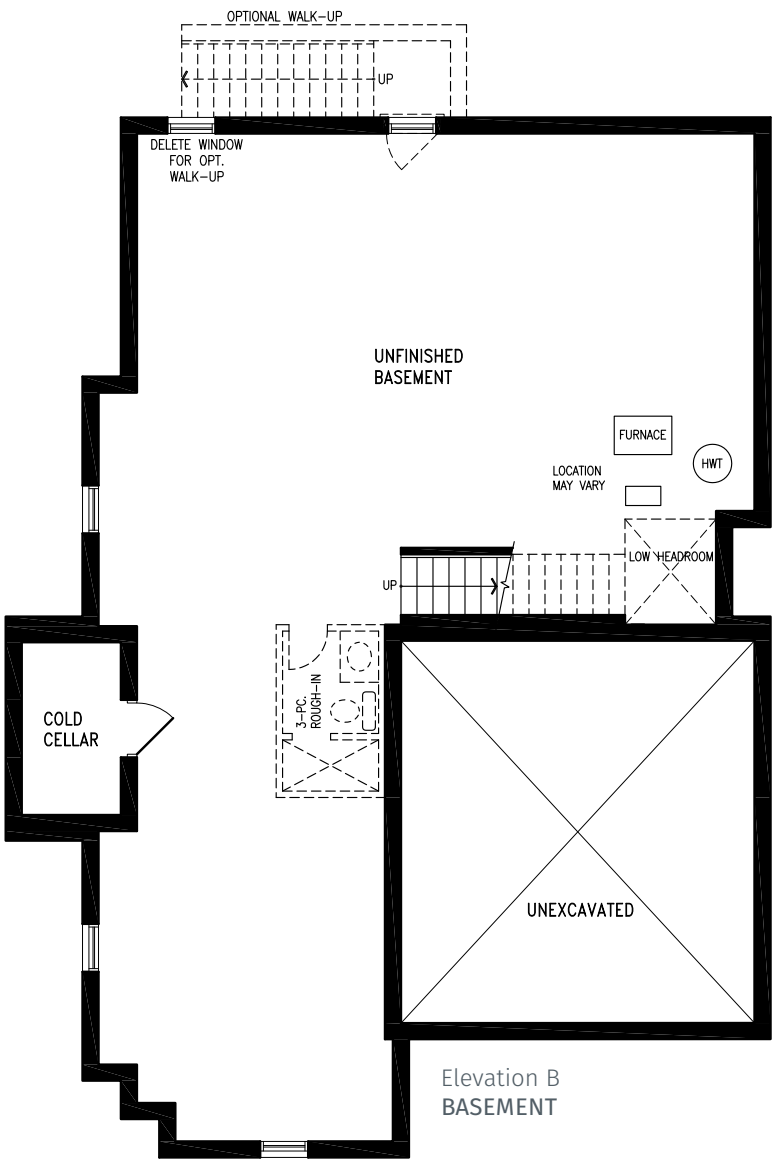
# THE POPLAR

ELEVATION A 3,084 SQ.FT. | ELEVATION B 3,084 SQ.FT.





Elevation B  
SECOND FLOOR



Elevation B  
BASEMENT





# THE SEATON LOFT

42' SINGLES



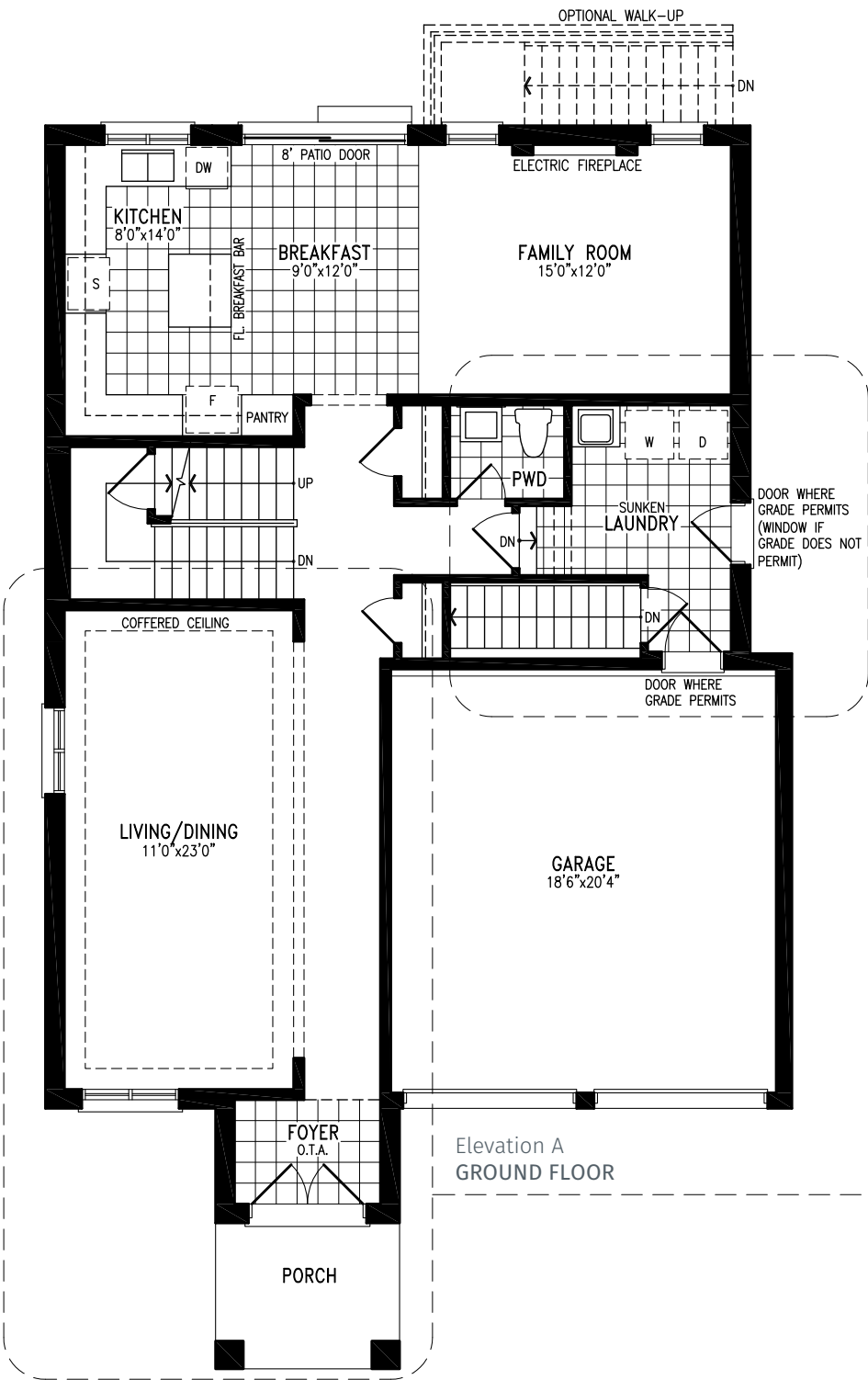
Visit [countrywidehomes.ca](https://countrywidehomes.ca) to view options and elevation B floorplans.

THE SEATON LOFT BG42-2L prices & specifications subject to change without notice. Useable square footage may vary from that stated herein. Artists concept only E.&O.E. © September 2020 CountryWide Homes. All rights reserved.

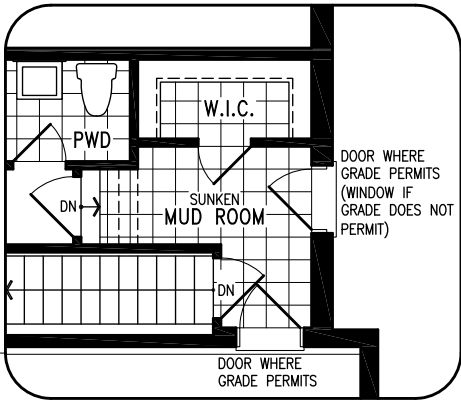


# THE SEATON LOFT

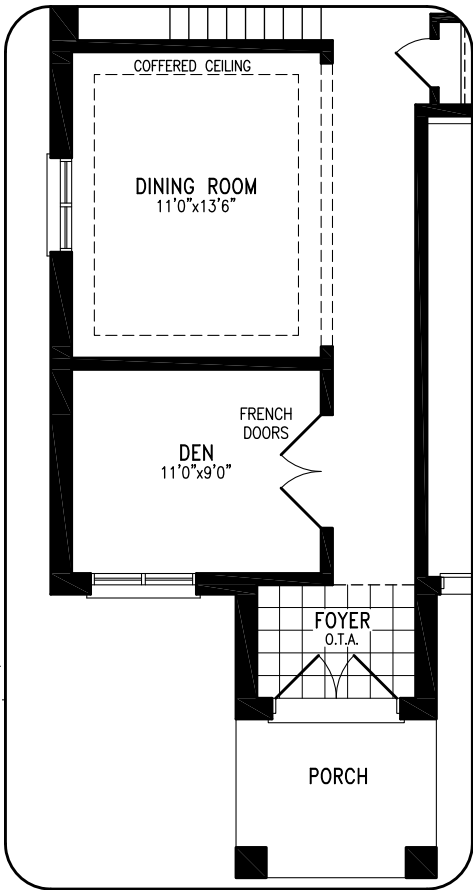
ELEVATION A 3,433 SQ.FT. | ELEVATION B 3,455 SQ.FT.



Elevation A  
GROUND FLOOR

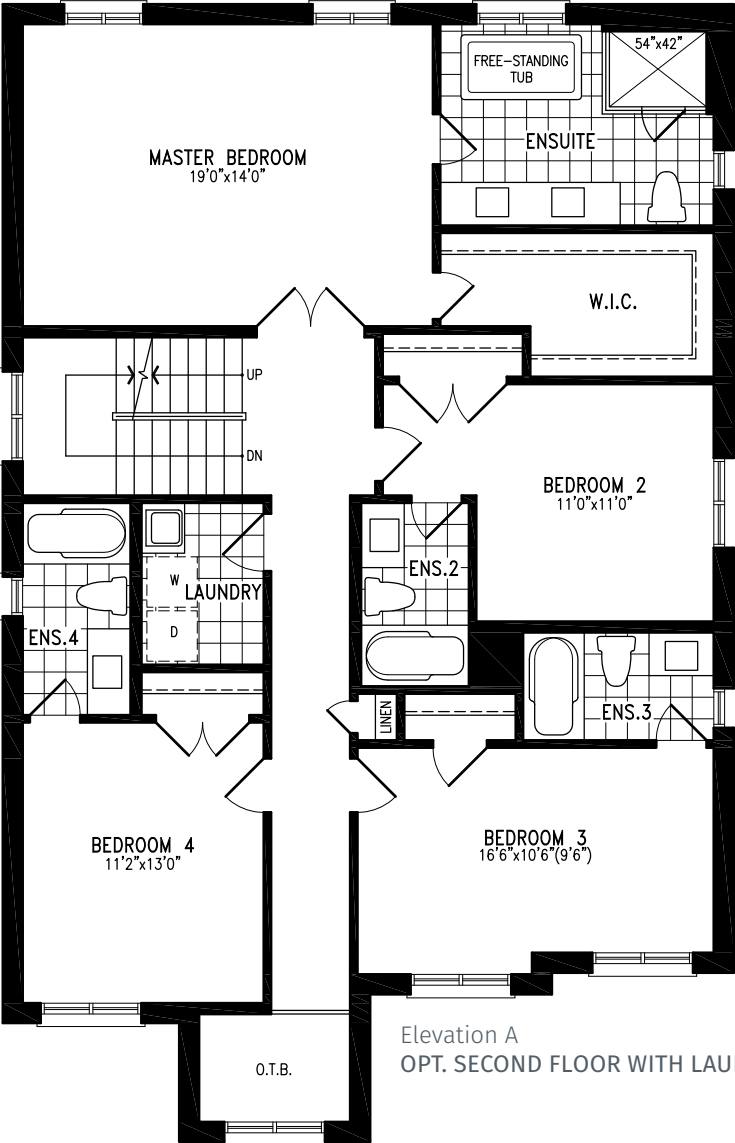


Elevation A  
OPT. MUDROOM WITH  
OPT. SECOND FLOOR LAUNDRY

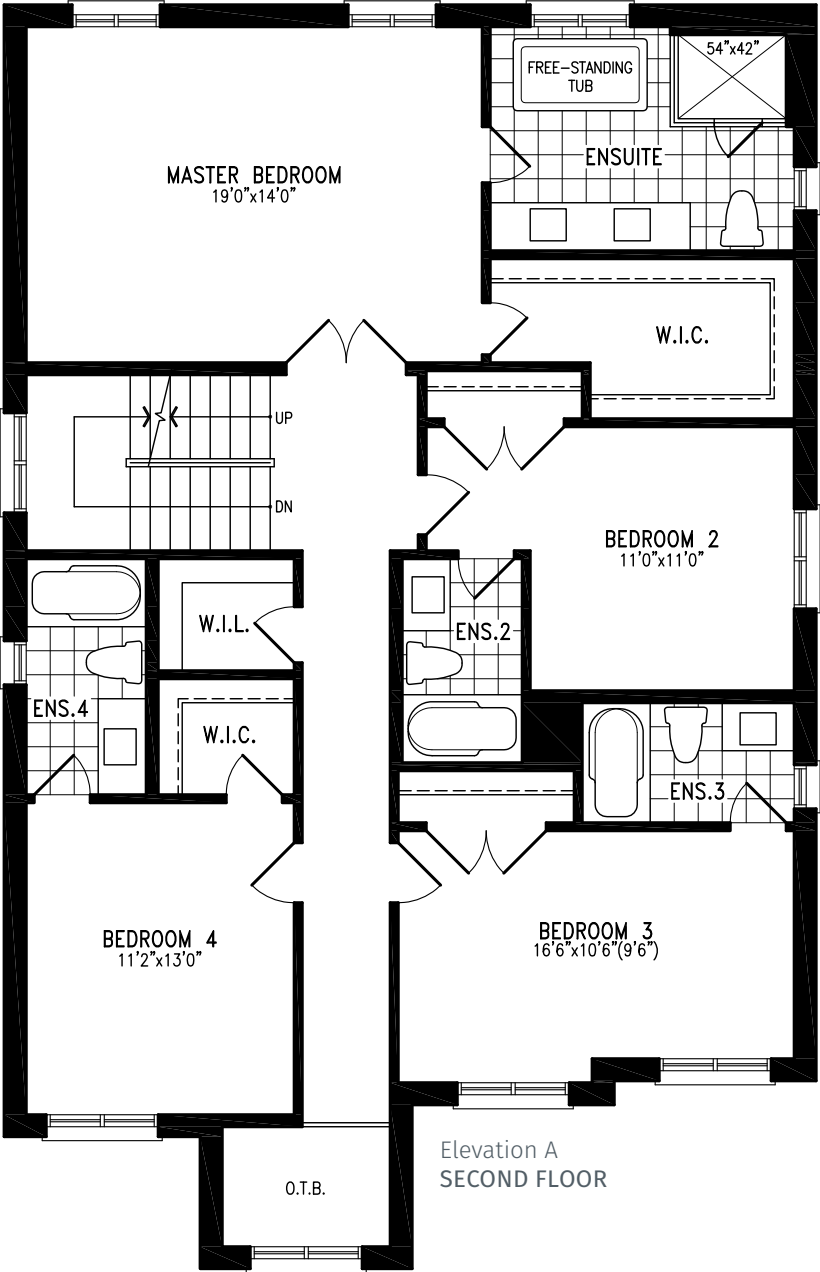


Elevation A  
OPT. DINING ROOM / DEN





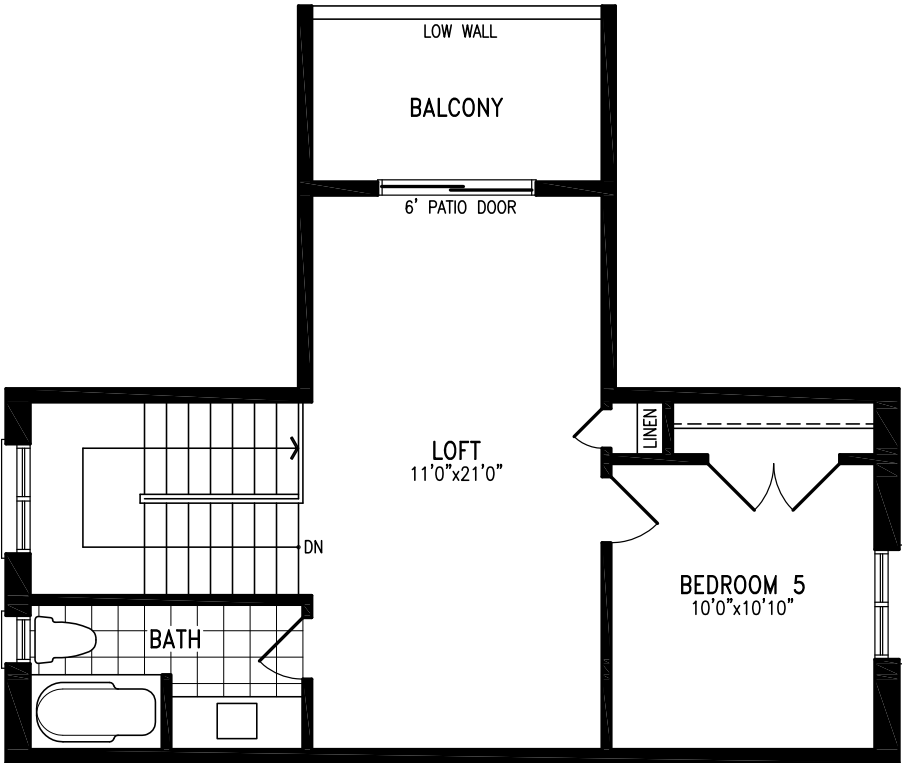
Elevation A  
OPT. SECOND FLOOR WITH LAUNDRY



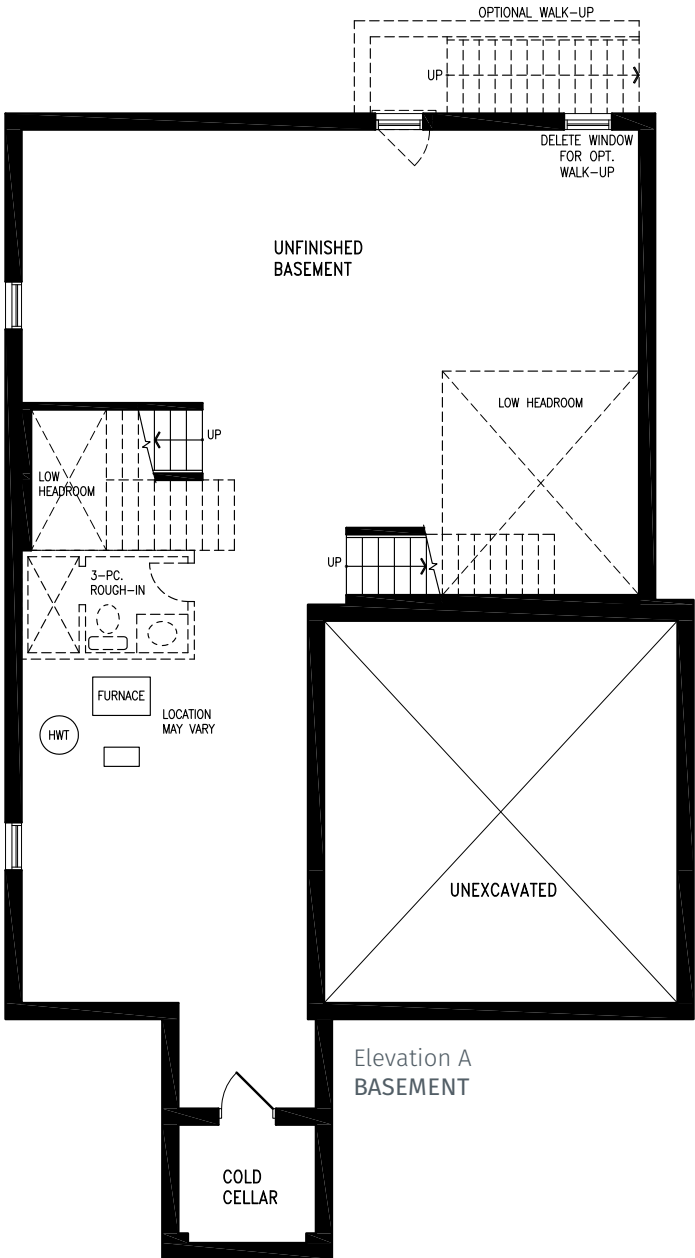
Elevation A  
SECOND FLOOR

# THE SEATON LOFT

ELEVATION A 3,433 SQ.FT. | ELEVATION B 3,455 SQ.FT.



Elevation A  
LOFT



Elevation A  
BASEMENT





# THE BRENTWOOD LOFT

42' SINGLES



ELEVATION A 3,696 SQ.FT.



ELEVATION B 3,706 SQ.FT.

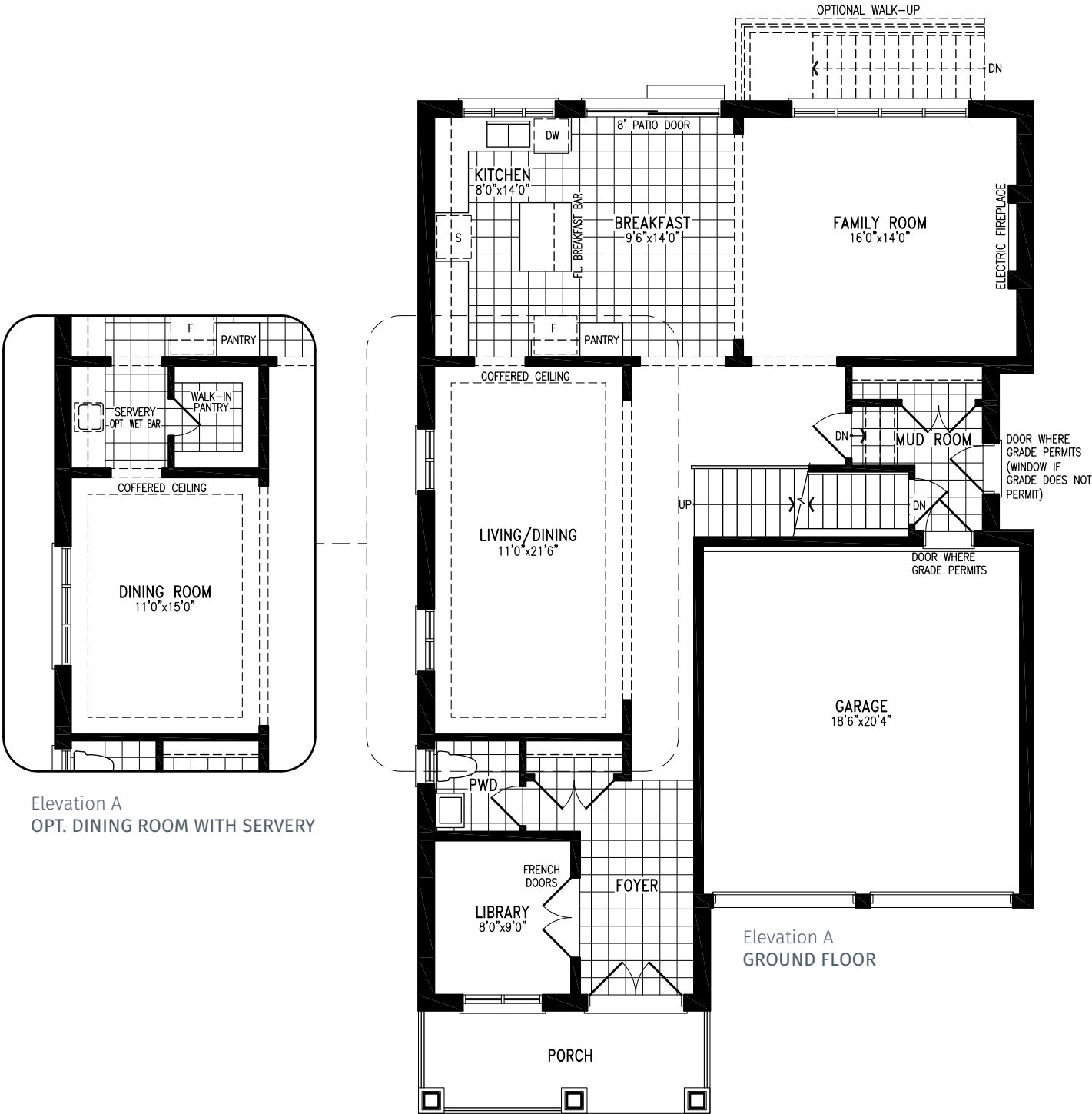
Visit [countrywidehomes.ca](https://countrywidehomes.ca) to view options and elevation B floorplans.

THE BRENTWOOD LOFT BG42-3L prices & specifications subject to change without notice. Useable square footage may vary from that stated herein. Artists concept only E.&O.E. © September 2020 CountryWide Homes. All rights reserved.



# THE BRENTWOOD LOFT

ELEVATION A 3,696 SQ.FT. | ELEVATION B 3,706 SQ.FT.



Elevation A  
OPT. DINING ROOM WITH SERVERY

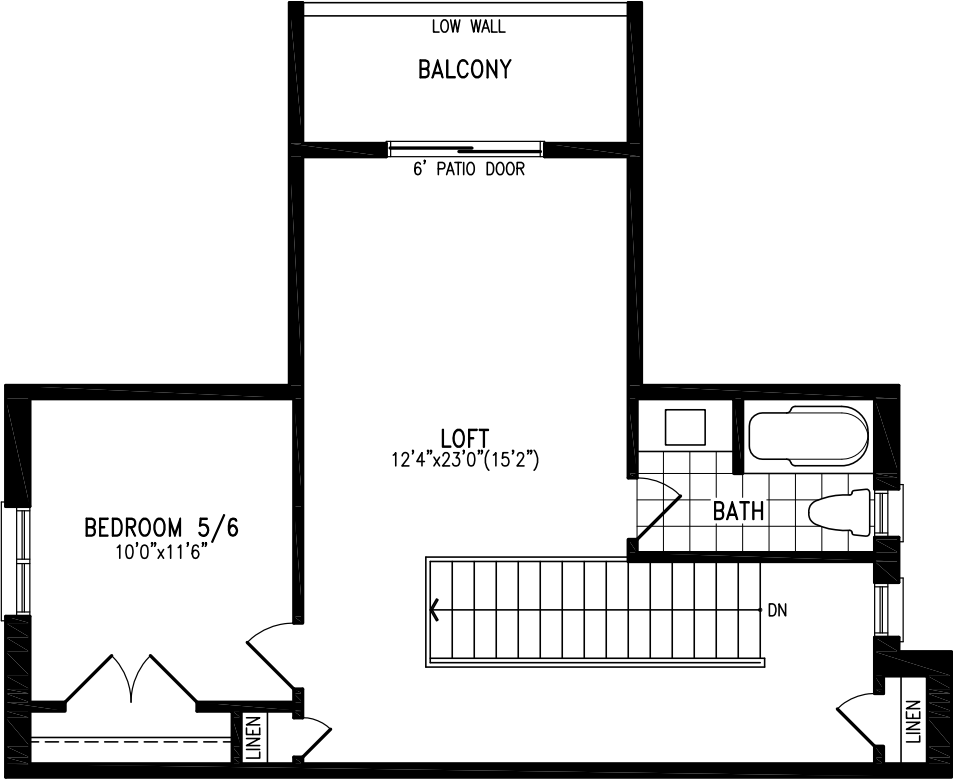
Elevation A  
GROUND FLOOR



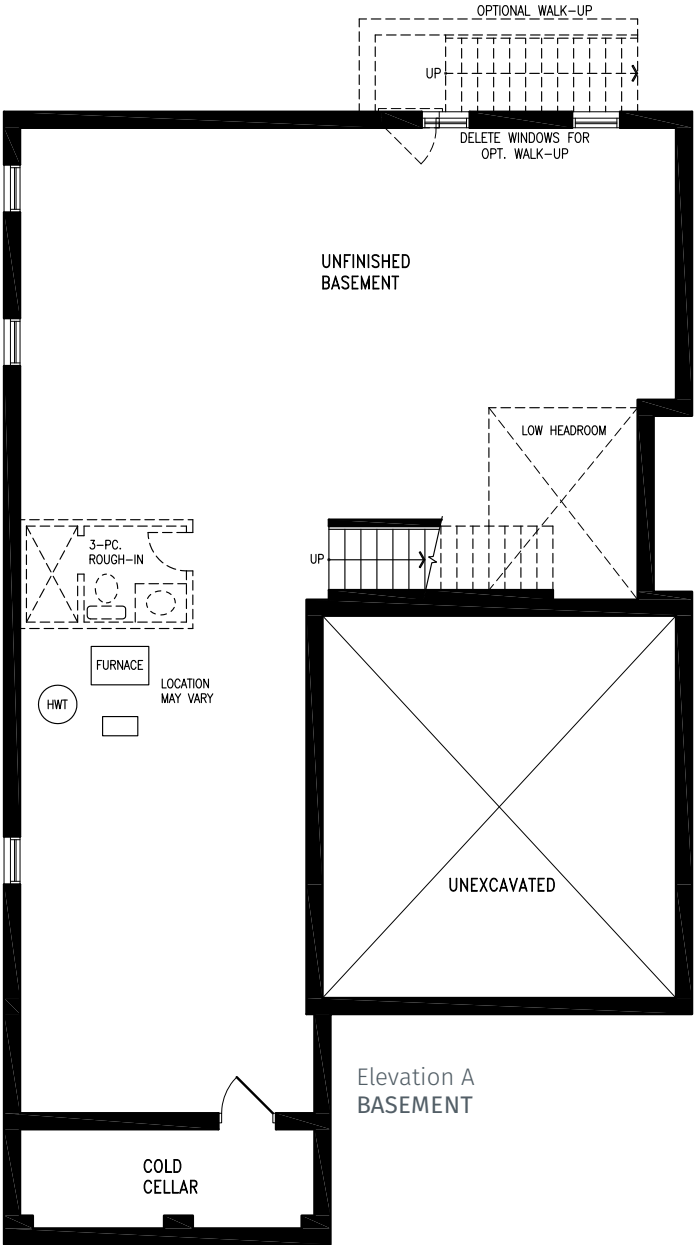


# THE BRENTWOOD LOFT

ELEVATION A 3,696 SQ.FT. | ELEVATION B 3,706 SQ.FT.



Elevation A  
LOFT



Elevation A  
BASEMENT





# Personalize

your home at Glen Abbey Encore.



CountryWide Homes offers a state-of-the-art Design Studio to help you get inspired and confident for the exciting step of personalizing your new home. Immerse yourself in hundreds of products, finishes, and different configurations. Everything conveniently arranged and itemized to make designing your dream home as easy as possible.

Our design studio consultants will be there to guide you throughout this journey. From layout to painting and everything in between, our experts have your vision in mind. You can be sure that we're committed to helping you design a home that's impressive, functional and uniquely yours.

## A tradition of building Quality.

CountryWide Homes is dedicated to building and conducting business to a higher standard. This means striving to add innovative and beautiful designs to our portfolio, pioneering new ways to develop homes, and building trust with each and every one of our customers through our premium homes and communities.





**COUNTRYWIDE**  
A NEW LEVEL

[countrywidehomes.ca](http://countrywidehomes.ca)

