



ELEVATION. 3



ELEVATION. 1



ELEVATION. 2

# LINCOLN 1

Elevation 1 • 2,304 sq.ft. | Elevation 2 • 2,309 sq.ft. | Elevation 3 • 2,316 sq.ft.

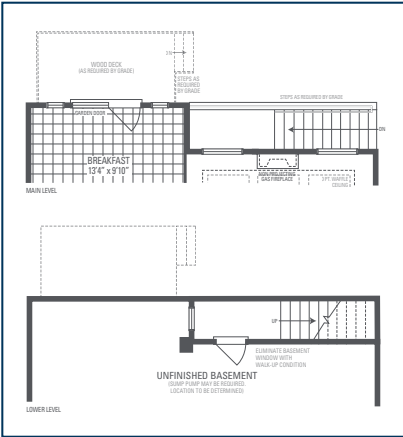
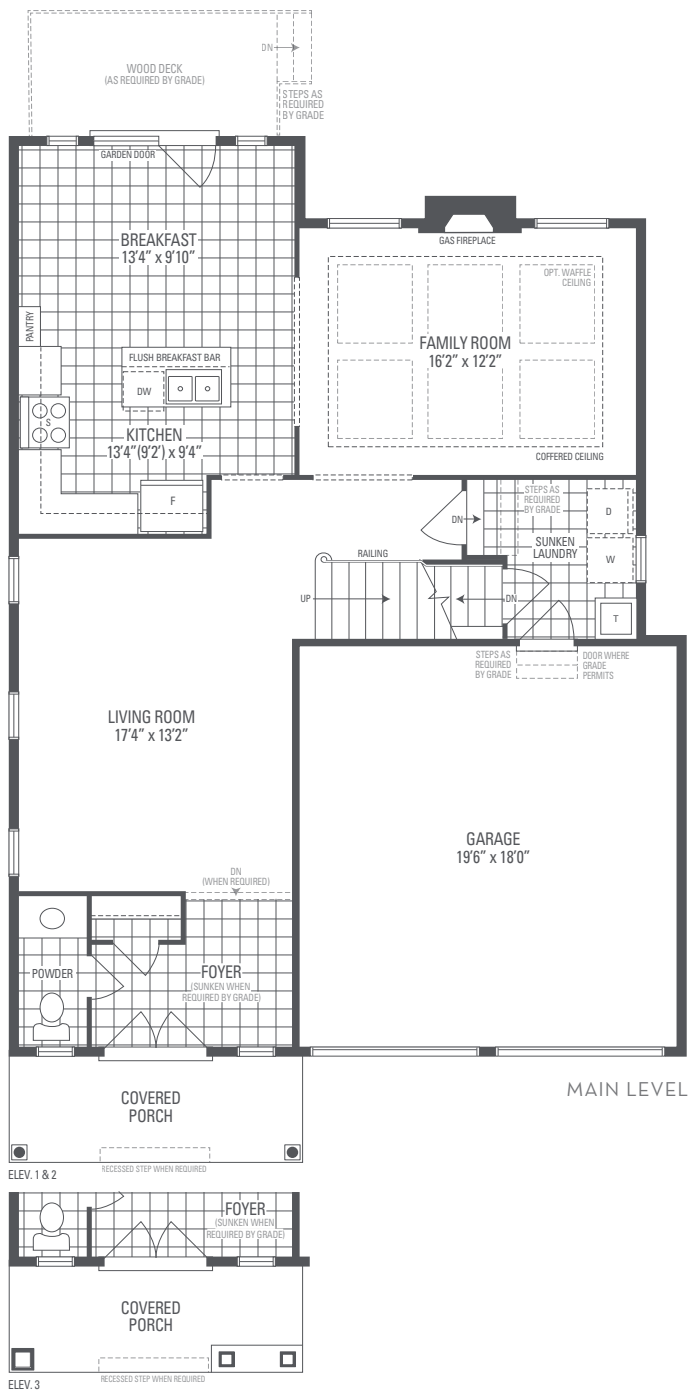
Main exterior building materials for front include:  
Elev. 1 • Brick, Elev. 2 • Cultured Stone + Brick, Elev. 3 • Cultured Stone + Brick + Painted Wood Product  
Barquentine Estates Ph. 2 • 40' • May 2021

NOTE: Orientation of home may be reversed and purchaser agrees to accept the same. Unit setback and roofline may vary due to siting. Steps may vary at any exterior entrance ways due to grading variance. All dimensions are approximate only and subject to change without notice. Actual usable floor space may vary from stated floor area. All renderings are artist's concept, specifications, architectural and mechanical detailing are subject to minor modifications. Mechanical wall encroachments may be required into finished rooms and garage spaces. E.&O.E.

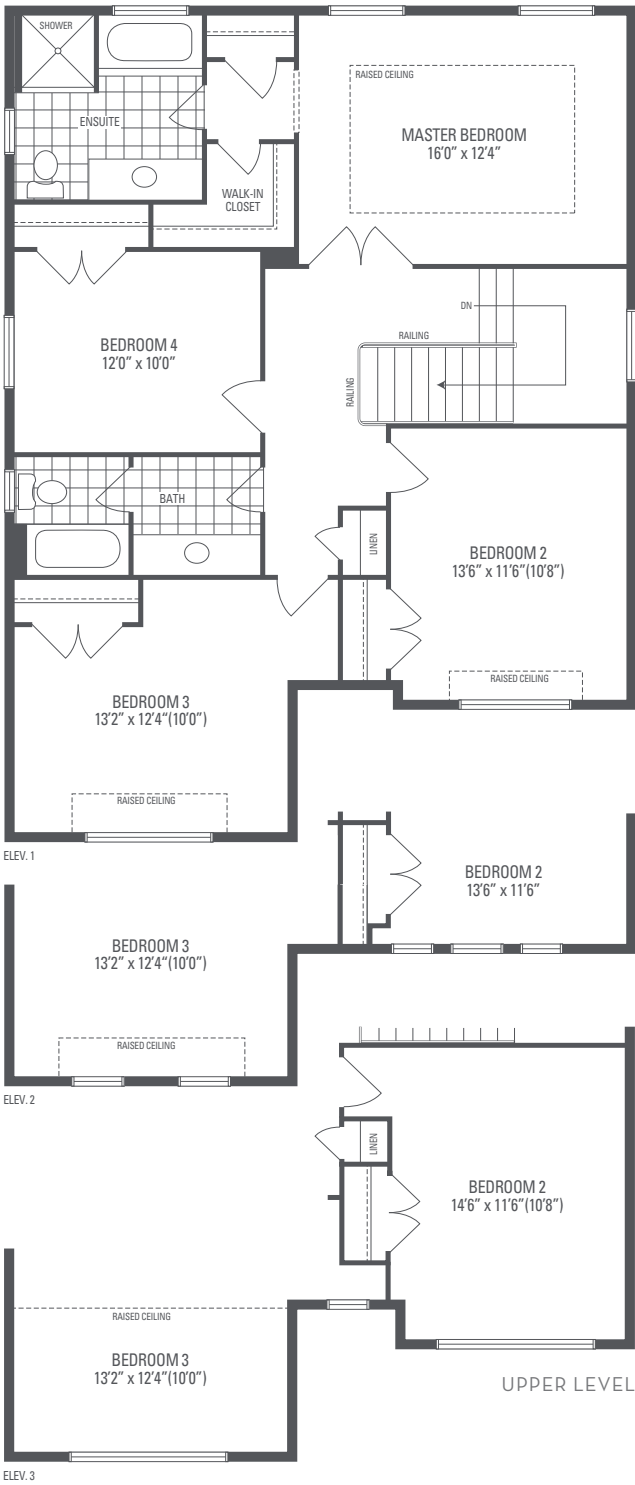
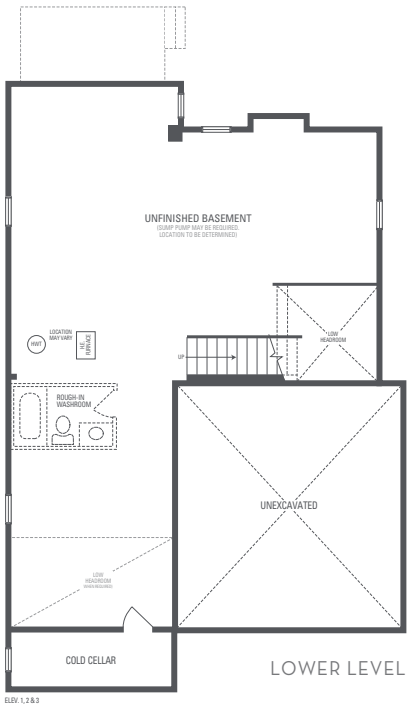


# LINCOLN 1

Elevation 1 • 2,304 sq.ft. | Elevation 2 • 2,309 sq.ft. | Elevation 3 • 2,316 sq.ft.



OPTIONAL UNCOVERED WALK-UP BASEMENT STAIR







ELEVATION. 2



ELEVATION. 1



ELEVATION. 3

# LINCOLN 2

Elevation 1 • 2,507 sq.ft. | Elevation 2 • 2,507 sq.ft. | Elevation 3 • 2,507 sq.ft.

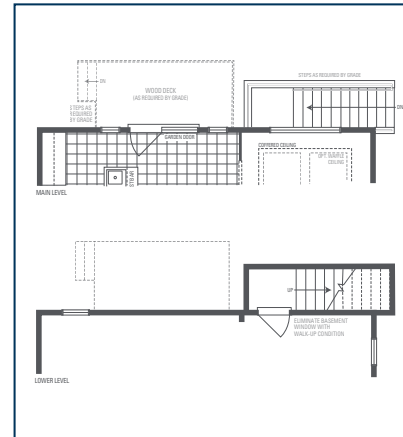
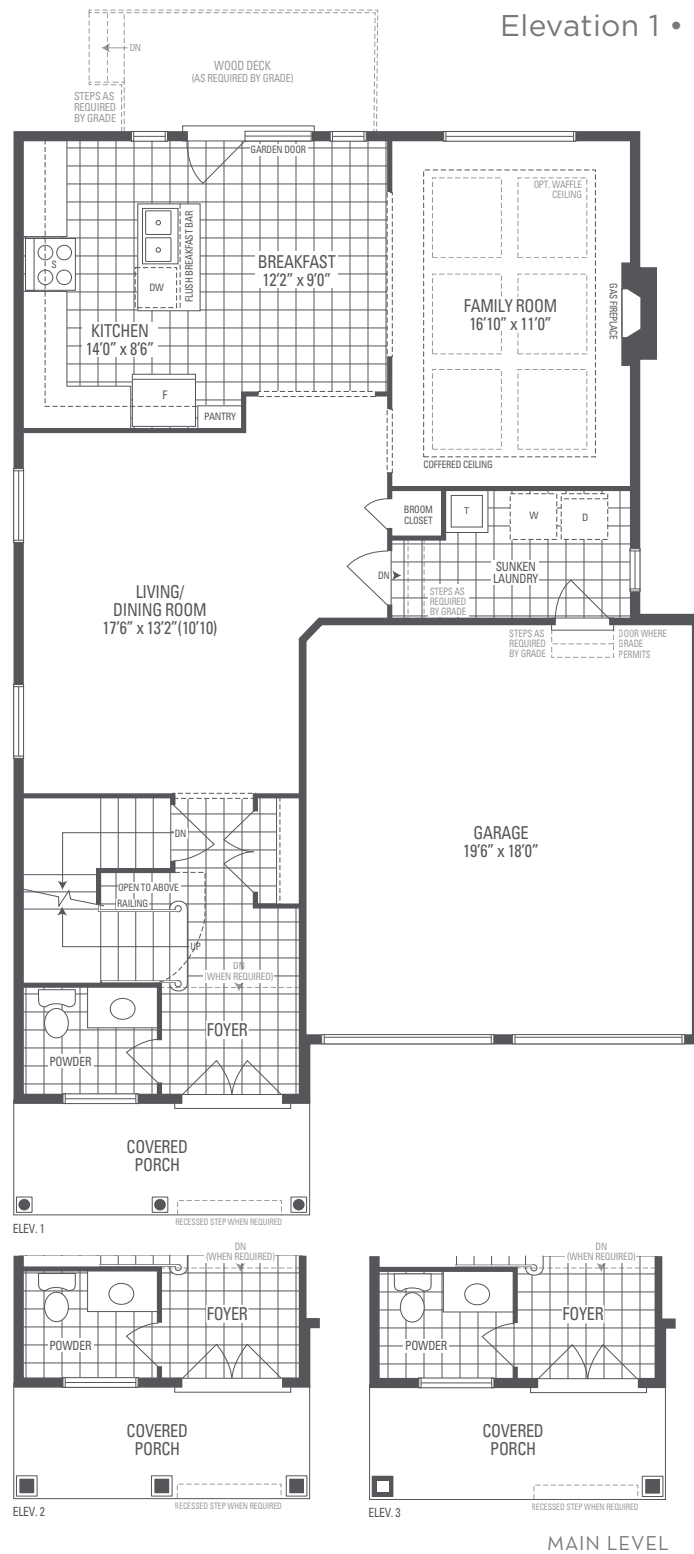
Main exterior building materials for front include:  
Elev. 1 • Brick, Elev. 2 • Cultured Stone + Brick, Elev. 3 • Cultured Ston + Brick + Painted Wood Product  
Barquentine Estates Ph. 2 • 40' • May 2021

NOTE: Orientation of home may be reversed and purchaser agrees to accept the same. Unit setback and roofline may vary due to siting. Steps may vary at any exterior entrance ways due to grading variance. All dimensions are approximate only and subject to change without notice. Actual usable floor space may vary from stated floor area. All renderings are artist's concept, specifications, architectural and mechanical detailing are subject to minor modifications. Mechanical wall encroachments may be required into finished rooms and garage spaces. E.&O.E.

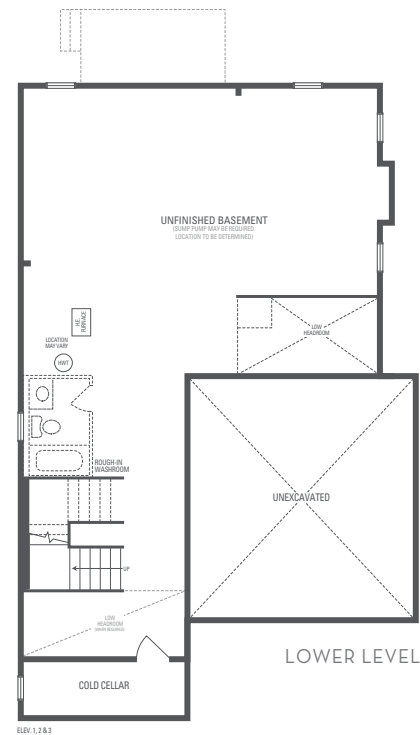


# LINCOLN 2

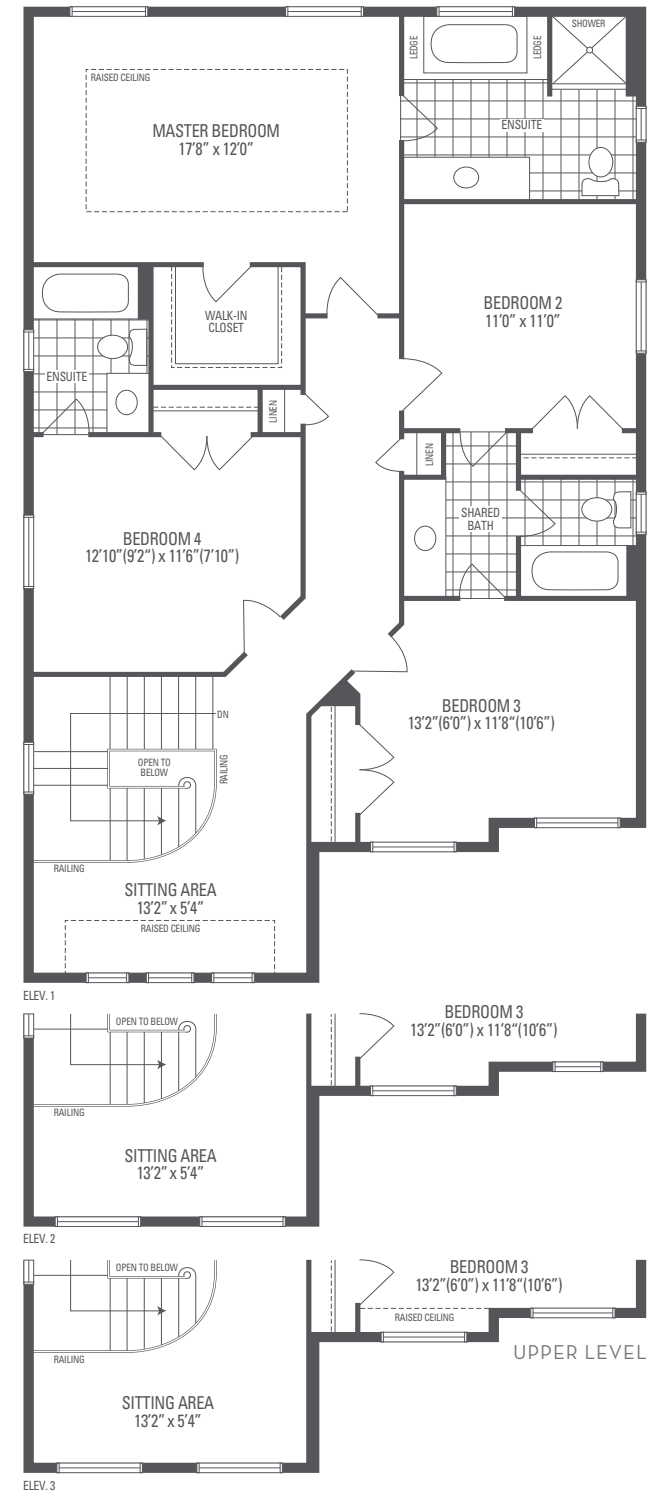
Elevation 1 • 2,507 sq.ft. | Elevation 2 • 2,507 sq.ft. | Elevation 3 • 2,507 sq.ft.



OPTIONAL UNCOVERED WALK-UP BASEMENT STAIR



LOWER LEVEL







ELEVATION. 3



ELEVATION. 1



ELEVATION. 2

# CARNEGIE 1

Elevation 1 • 2,743 sq.ft. | Elevation 2 • 2,750 sq.ft. | Elevation 3 • 2,754 sq.ft.

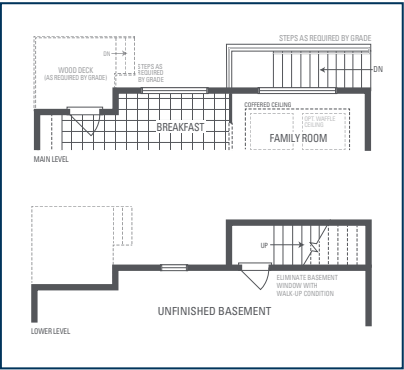
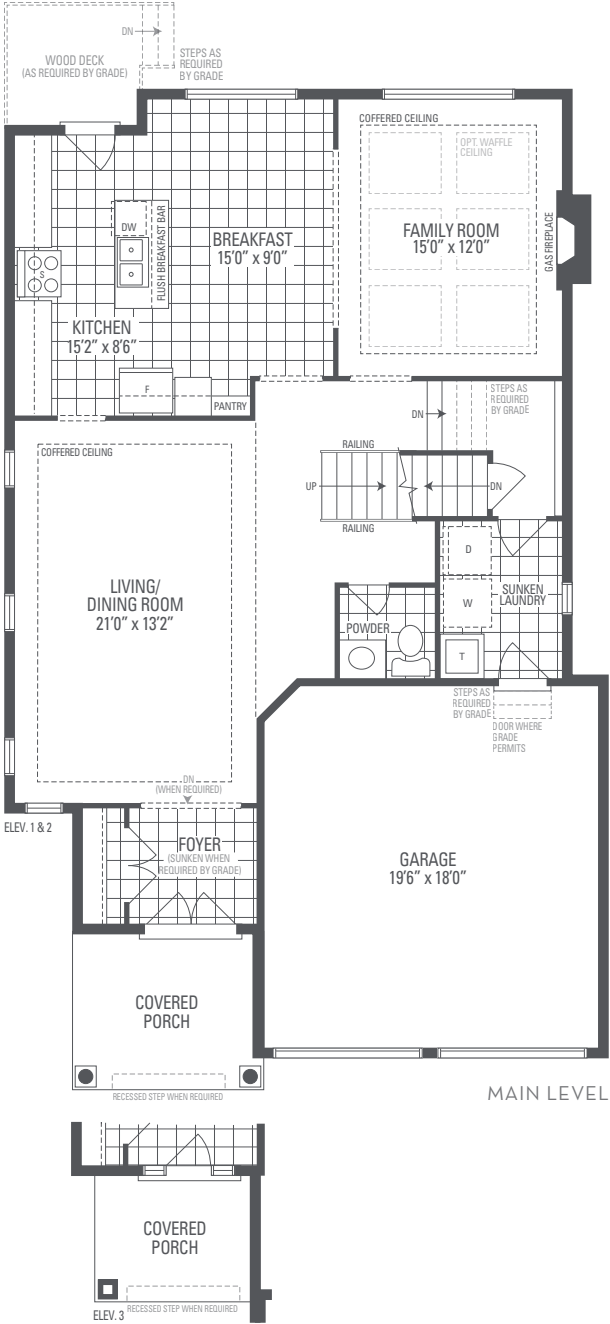
Main exterior building materials for front include: Elev. 1 • Cultured Stone + Brick, Elev. 2 • Cultured Stone + Brick + Painted Wood Product, Elev. 3 • Cultured Stone + Brick + Painted Wood Product  
Barquentine Estates Ph. 2 • 40' • May 2021

NOTE: Orientation of home may be reversed and purchaser agrees to accept the same. Unit setback and roofline may vary due to siting. Steps may vary at any exterior entrance ways due to grading variance. All dimensions are approximate only and subject to change without notice. Actual usable floor space may vary from stated floor area. All renderings are artist's concept, specifications, architectural and mechanical detailing are subject to minor modifications. Mechanical wall encroachments may be required into finished rooms and garage spaces. E.&O.E.

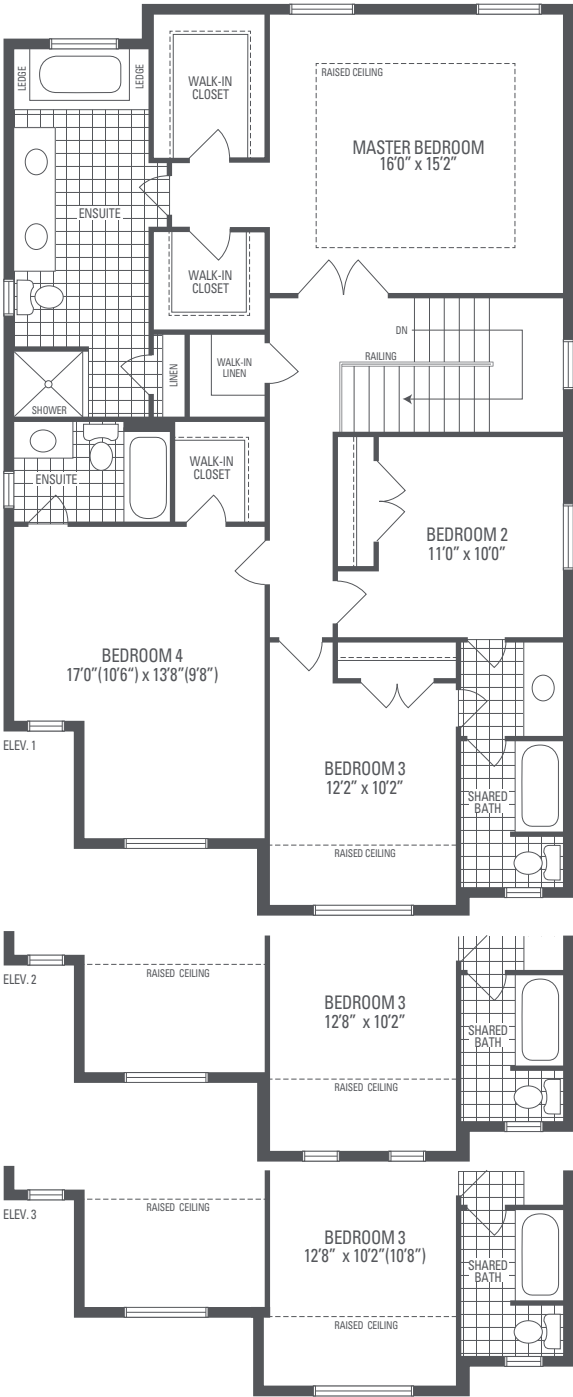
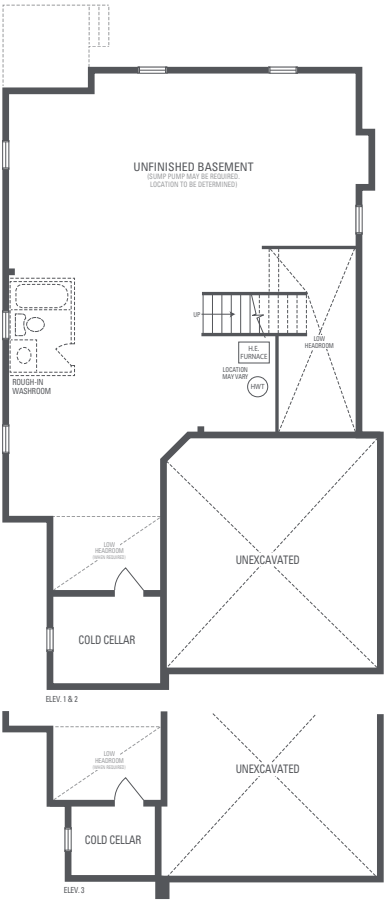


# CARNEGIE 1

Elevation 1 • 2,743 sq.ft. | Elevation 2 • 2,750 sq.ft. | Elevation 3 • 2,754 sq.ft.



OPTIONAL UNCOVERED WALK-UP BASEMENT STAIR



UPPER LEVEL





ELEVATION. 1



ELEVATION. 2



ELEVATION. 3

# CARNEGIE 2

Elevation 1 • 2,965 sq.ft. | Elevation 2 • 2,975 sq.ft. | Elevation 3 • 2,985 sq.ft.

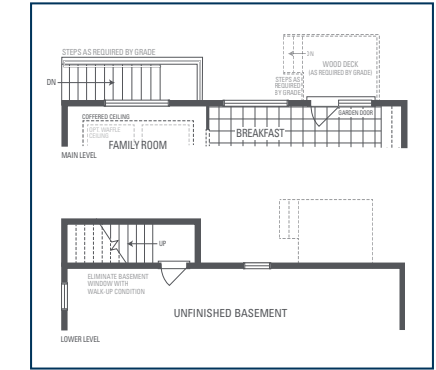
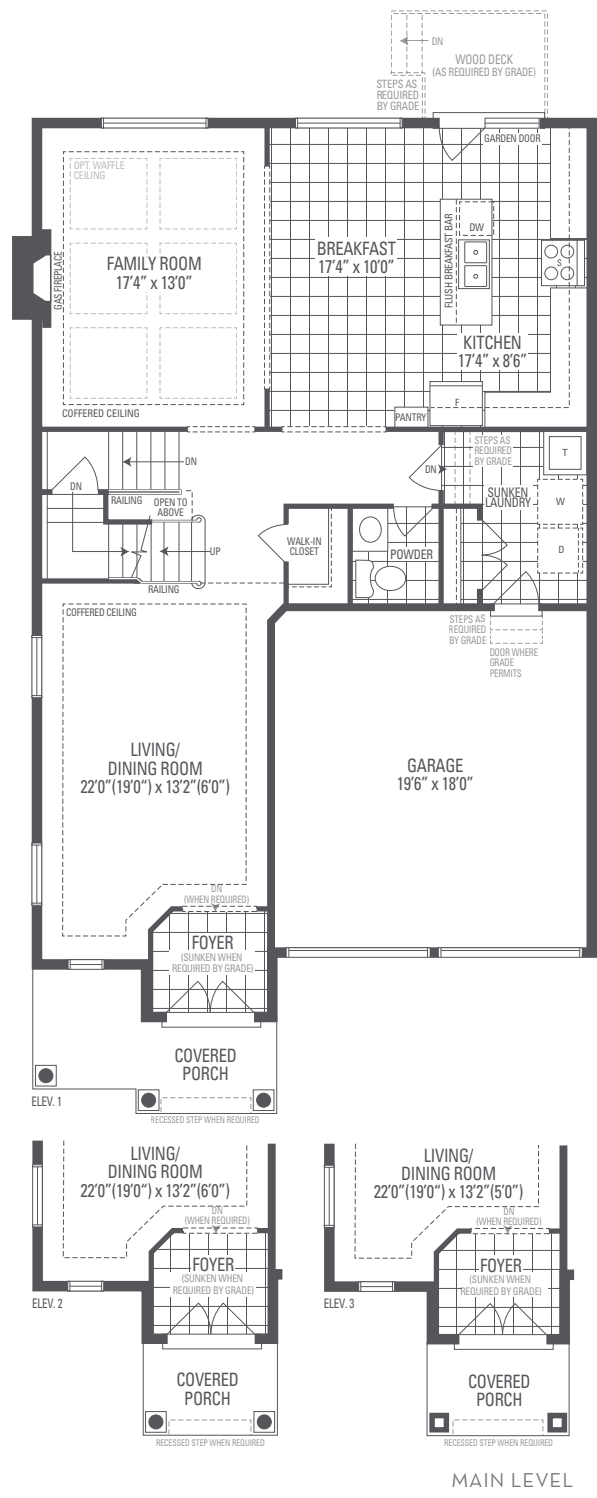
Main exterior building materials for front include:  
Elev. 1 • Cultured Stone + Brick, Elev. 2 • Cultured Stone + Brick, Elev. 3 • Cultured Stone + Brick + Painted Wood Product  
Barquentine Estates Ph. 2 • 40' • May 2021

NOTE: Orientation of home may be reversed and purchaser agrees to accept the same. Unit setback and roofline may vary due to siting. Steps may vary at any exterior entrance ways due to grading variance. All dimensions are approximate only and subject to change without notice. Actual usable floor space may vary from stated floor area. All renderings are artist's concept, specifications, architectural and mechanical detailing are subject to minor modifications. Mechanical wall encroachments may be required into finished rooms and garage spaces. E.&O.E.

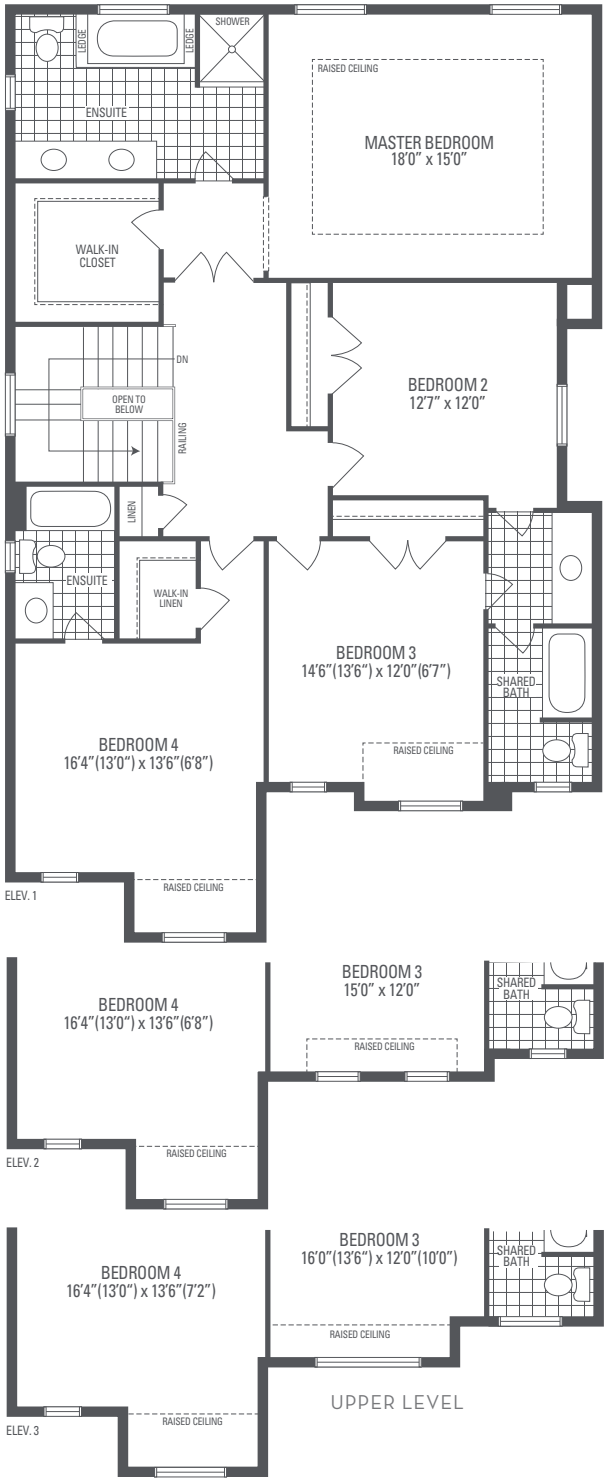
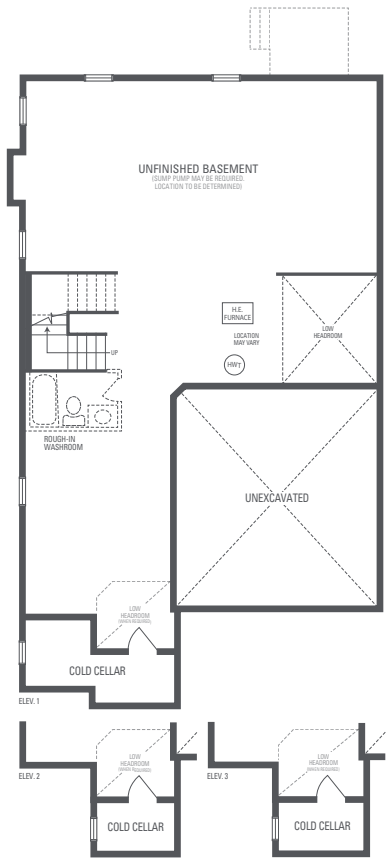


# CARNEGIE 2

Elevation 1 • 2,965 sq.ft. | Elevation 2 • 2,975 sq.ft. | Elevation 3 • 2,985 sq.ft.



OPTIONAL UNCOVERED WALK-UP BASEMENT STAIR







ELEVATION. 3



ELEVATION. 1



ELEVATION. 2

# CARNEGIE 3

Elevation 1 • 3,254 sq.ft. | Elevation 2 • 3,222 sq.ft. | Elevation 3 • 3,240 sq.ft.

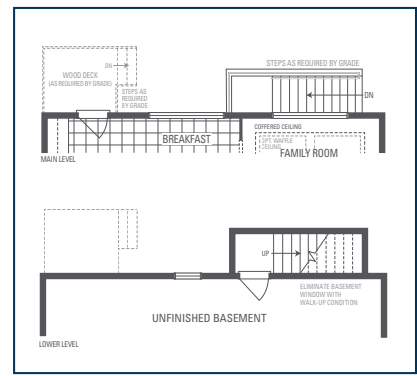
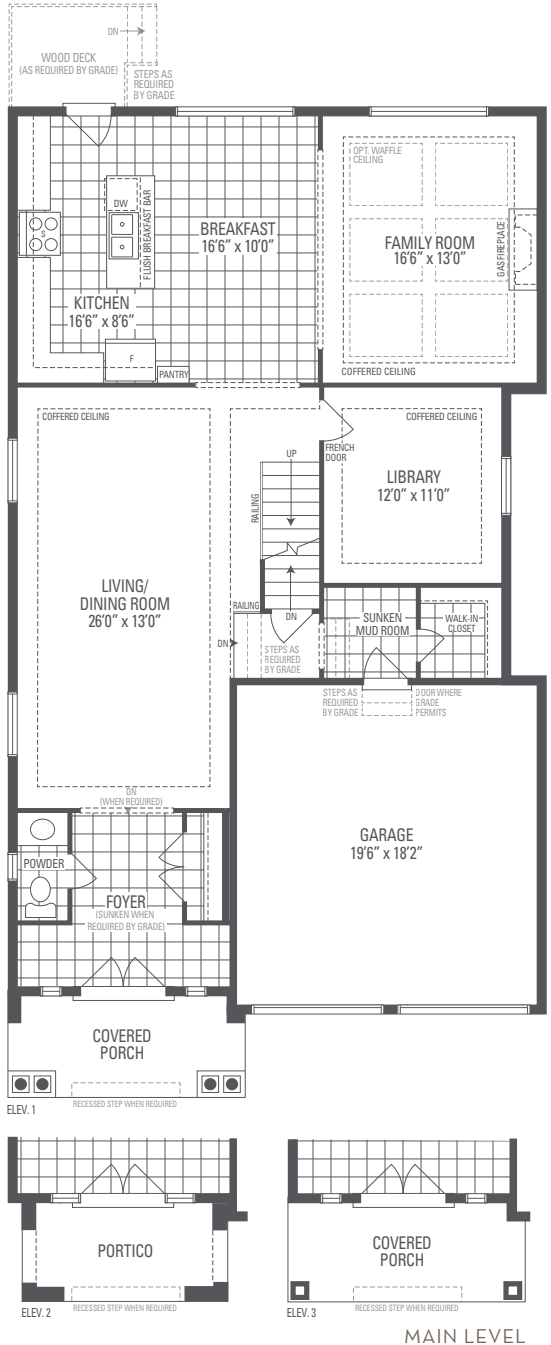
Main exterior building materials for front include:  
 Elev. 1 • Cultured Stone + Brick, Elev. 2 • Cultured Stone + Brick, Elev. 3 • Cultured Stone + Brick + Painted Wood Product.  
 Barquentine Estates Ph. 2 • 40' • May 2021

NOTE: Orientation of home may be reversed and purchaser agrees to accept the same. Unit setback and roofline may vary due to siting. Steps may vary at any exterior entrance ways due to grading variance. All dimensions are approximate only and subject to change without notice. Actual usable floor space may vary from stated floor area. All renderings are artist's concept, specifications, architectural and mechanical detailing are subject to minor modifications. Mechanical wall encroachments may be required into finished rooms and garage spaces. E.&O.E.

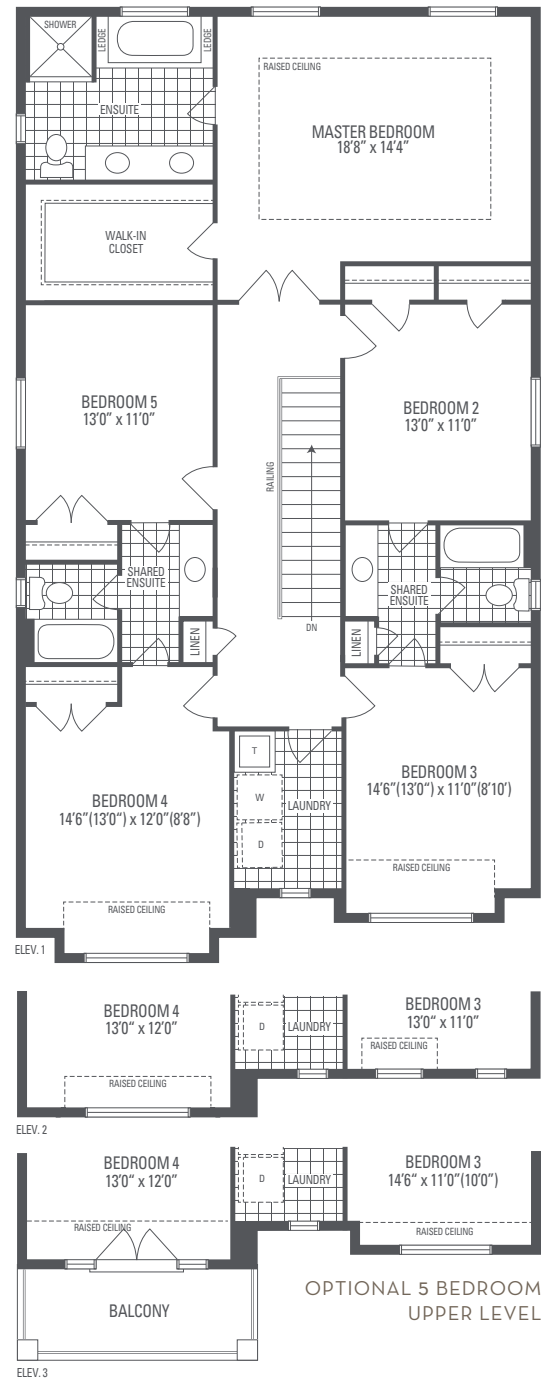
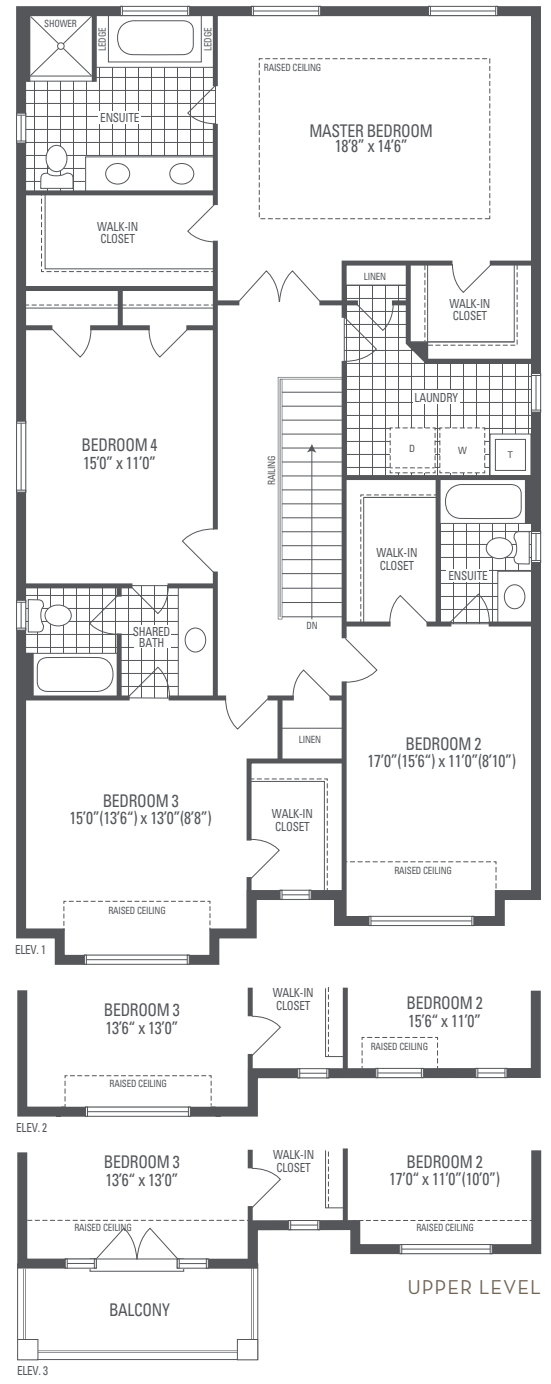
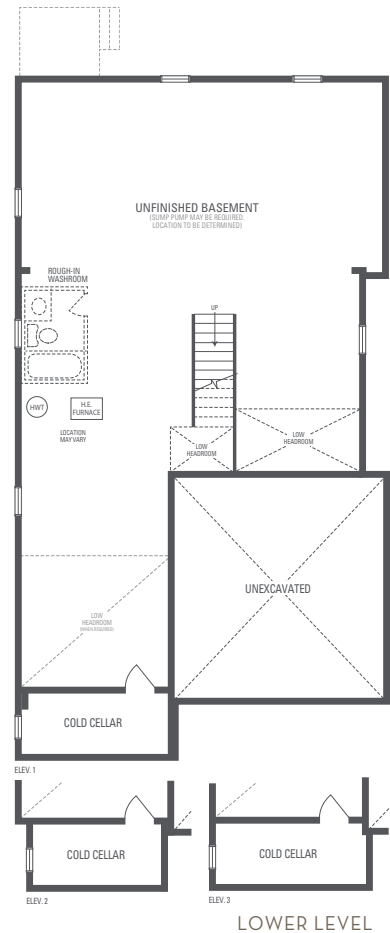


# CARNEGIE 3

Elevation 1 • 3,254 sq.ft. | Elevation 2 • 3,222 sq.ft. | Elevation 3 • 3,240 sq.ft.



OPTIONAL UNCOVERED WALK-UP BASEMENT STAIR







ELEVATION. 3



ELEVATION. 1



ELEVATION. 2

# CARNEGIE 40A

Elevation 1 • 3,130 sq.ft. | Elevation 2 • 3,126 sq.ft. | Elevation 3 • 3,135 sq.ft.

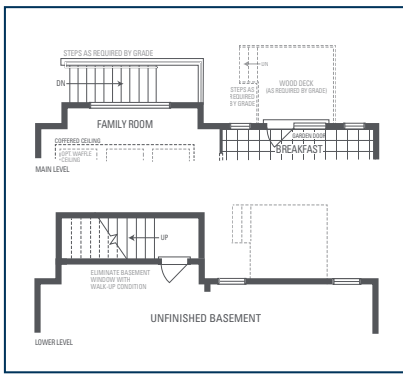
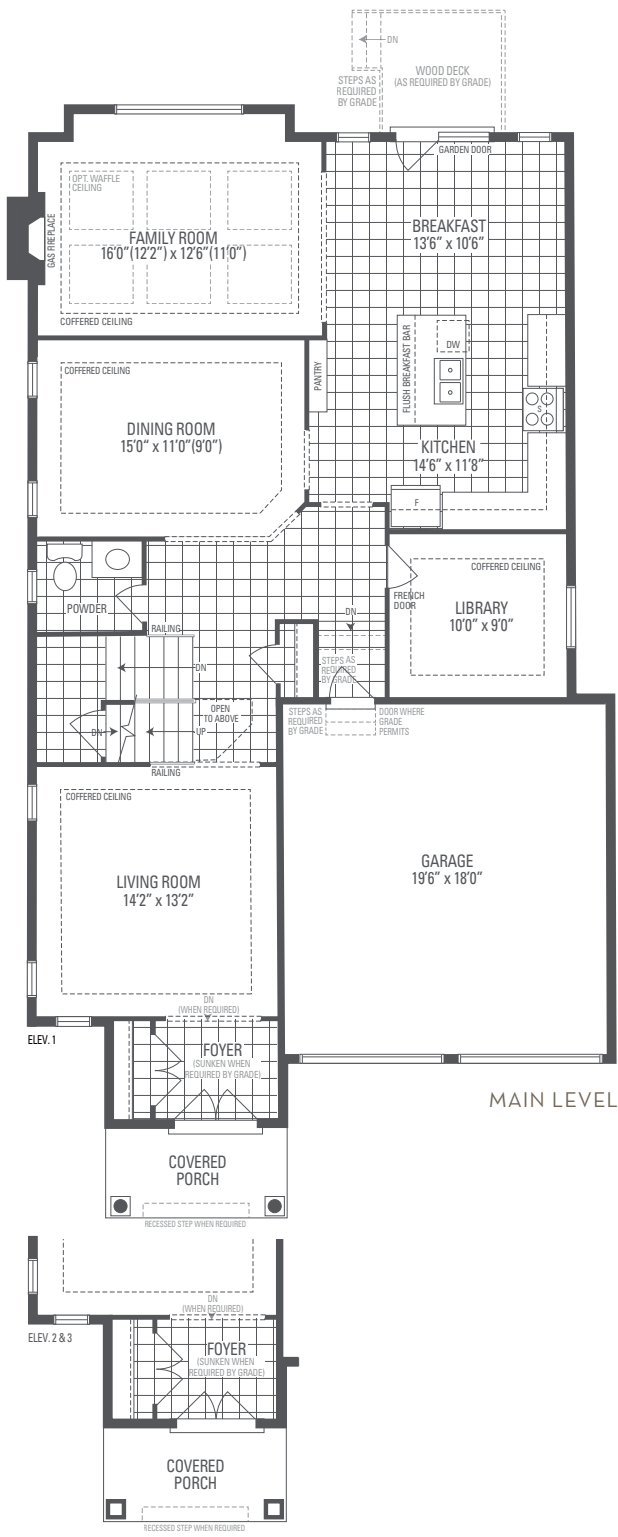
Main exterior building materials for front include:  
 Elev. 1 • Cultured Stone + Brick, Elev. 2 • Cultured Stone + Brick, Elev. 3 • Cultured Stone + Brick + Painted Wood Product  
 Barquentine Estates Ph. 2 • 40' • May 2021

NOTE: Orientation of home may be reversed and purchaser agrees to accept the same. Unit setback and roofline may vary due to siting. Steps may vary at any exterior entrance ways due to grading variance. All dimensions are approximate only and subject to change without notice. Actual usable floor space may vary from stated floor area. All renderings are artist's concept, specifications, architectural and mechanical detailing are subject to minor modifications. Mechanical wall encroachments may be required into finished rooms and garage spaces. E.&O.E.

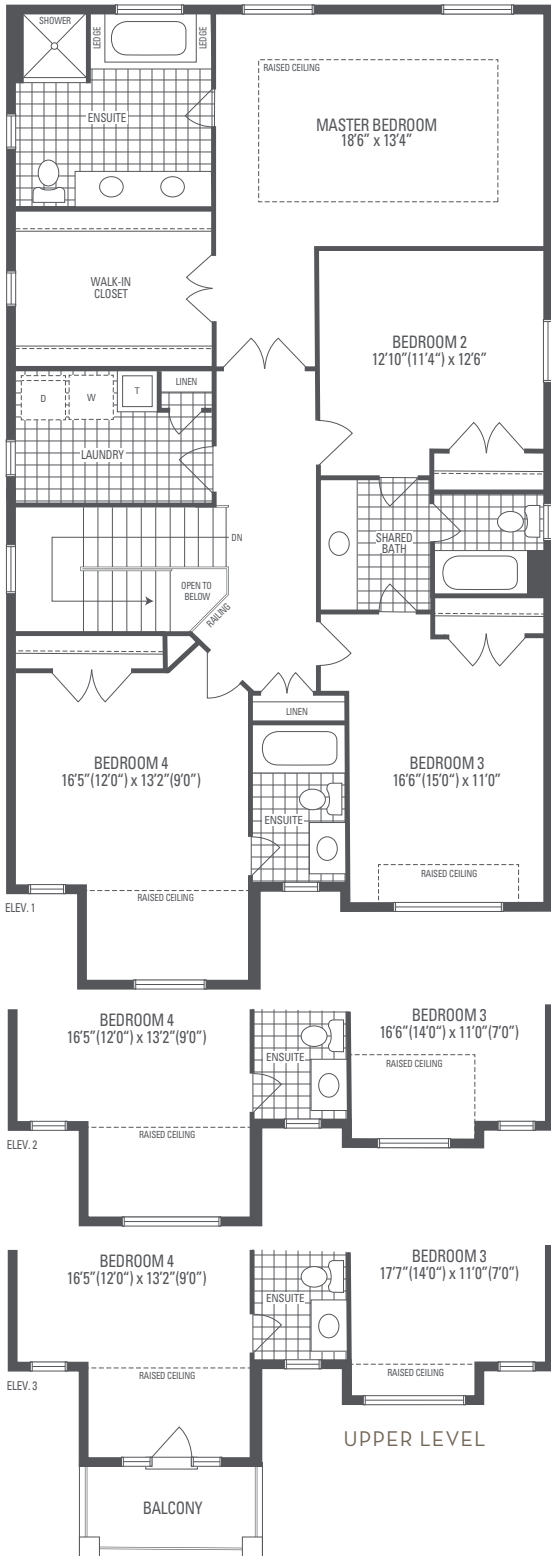
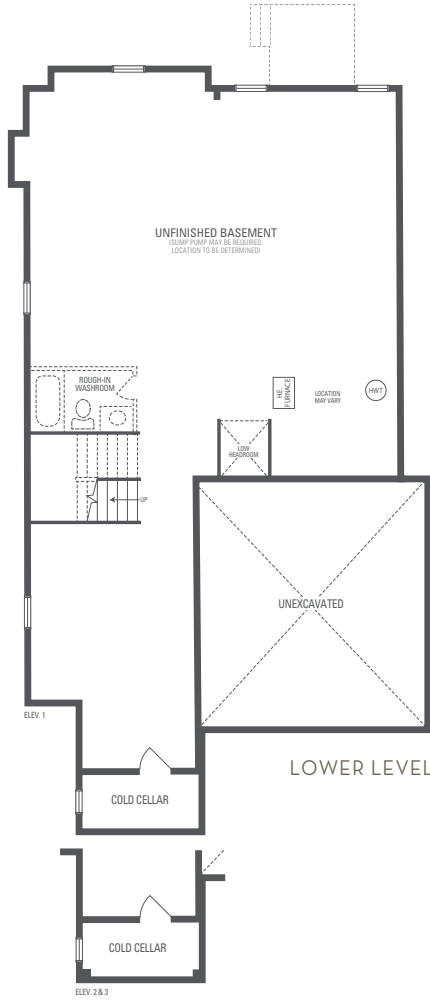


# CARNEGIE 40A

Elevation 1 • 3,130 sq.ft. | Elevation 2 • 3,126 sq.ft. | Elevation 3 • 3,135 sq.ft.



OPTIONAL UNCOVERED WALK-UP BASEMENT STAIR







ELEVATION. 1



ELEVATION. 2



ELEVATION. 3

# CARNEGIE 4

Elevation 1 • 3,369 sq.ft. | Elevation 2 • 3,371 sq.ft. | Elevation 3 • 3,381 sq.ft.

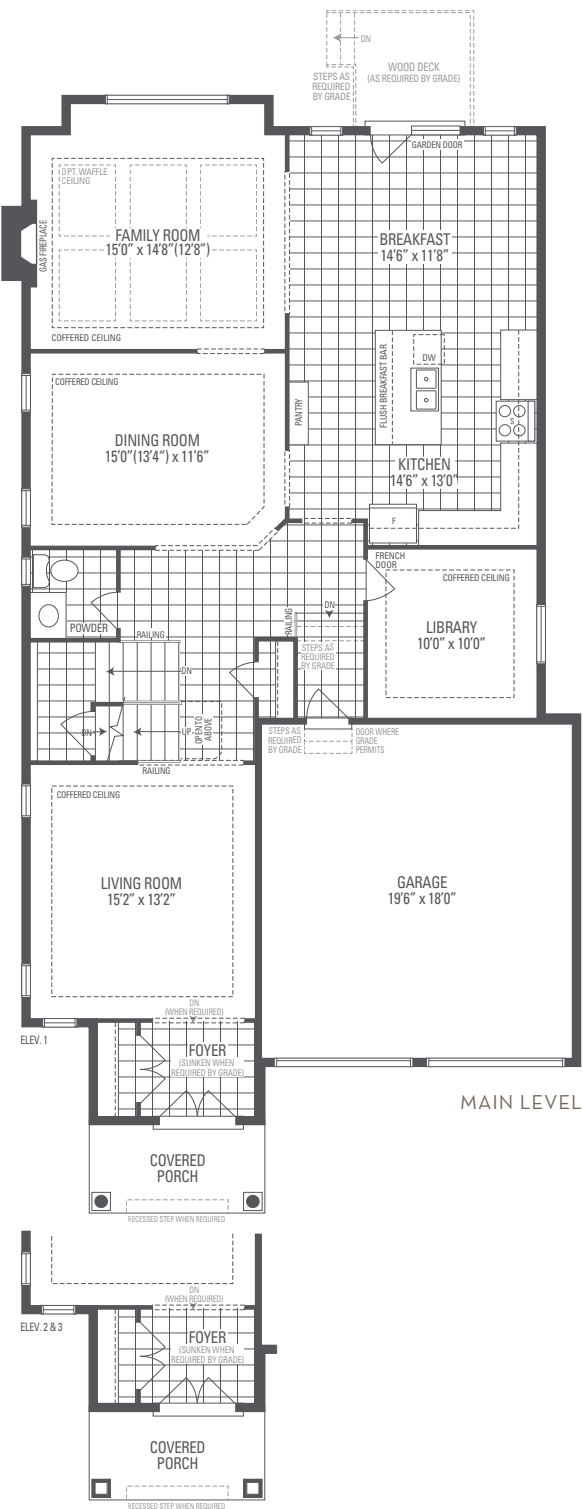
Main exterior building materials for front include:  
Elev. 1 • Cultured Stone + Brick, Elev. 2 • Cultured Stone + Brick, Elev. 3 • Cultured Stone + Brick + Painted Wood Product  
Barquentine Estates Ph. 2 • 40' • May 2021

NOTE: Orientation of home may be reversed and purchaser agrees to accept the same. Unit setback and roofline may vary due to siting. Steps may vary at any exterior entrance ways due to grading variance. All dimensions are approximate only and subject to change without notice. Actual usable floor space may vary from stated floor area. All renderings are artist's concept, specifications, architectural and mechanical detailing are subject to minor modifications. Mechanical wall encroachments may be required into finished rooms and garage spaces. E.&O.E.

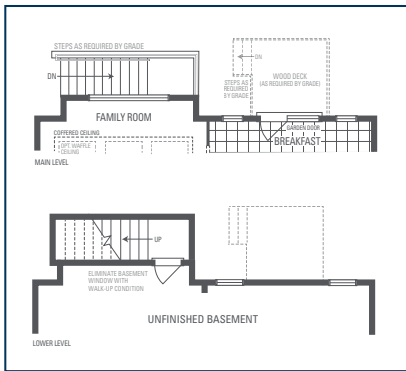


# CARNEGIE 4

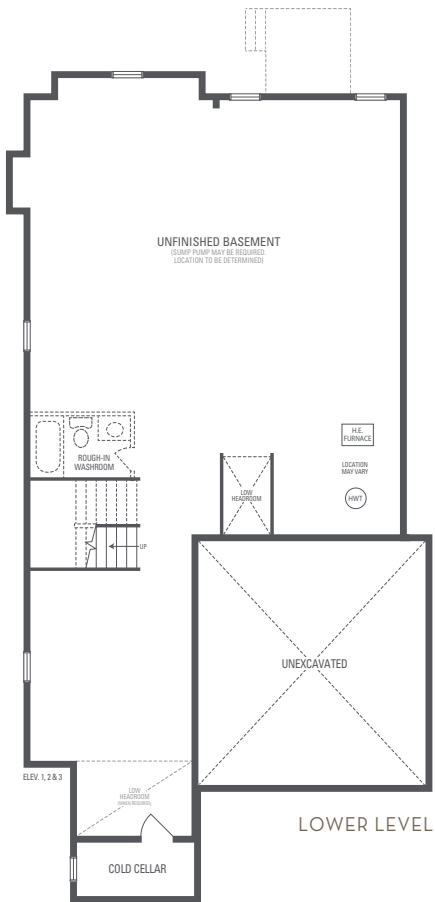
Elevation 1 • 3,369 sq.ft. | Elevation 2 • 3,371 sq.ft. | Elevation 3 • 3,381 sq.ft.



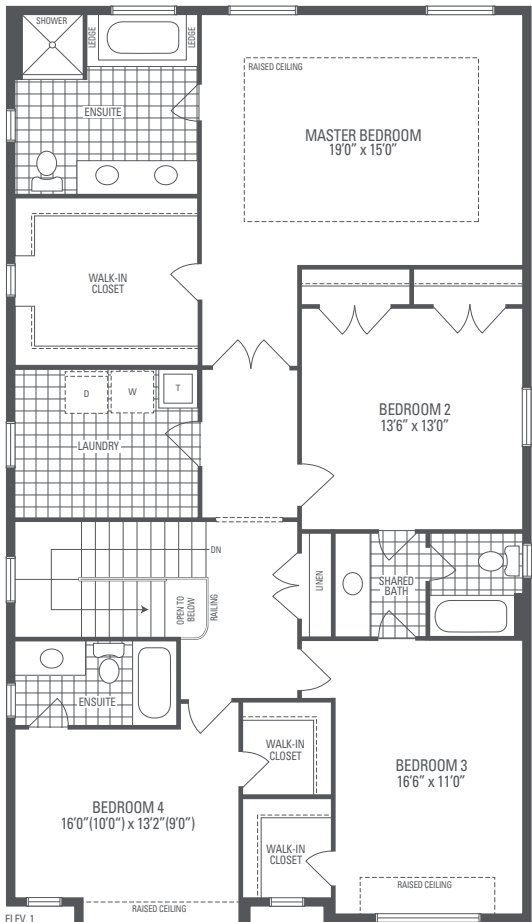
MAIN LEVEL



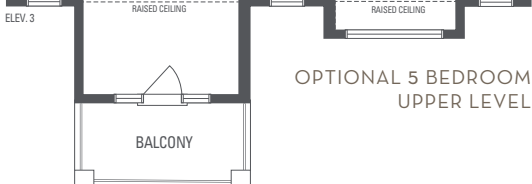
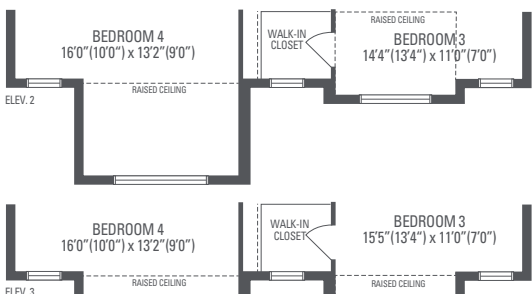
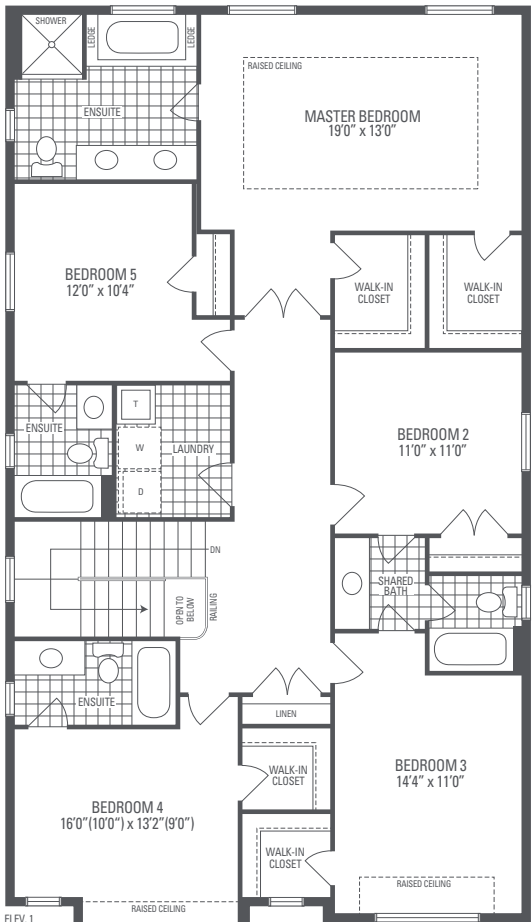
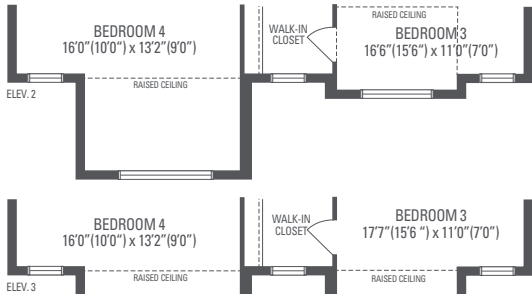
OPTIONAL UNCOVERED WALK-UP BASEMENT STAIR



LOWER LEVEL



UPPER LEVEL



OPTIONAL 5 BEDROOM UPPER LEVEL





# CARNEGIE 12

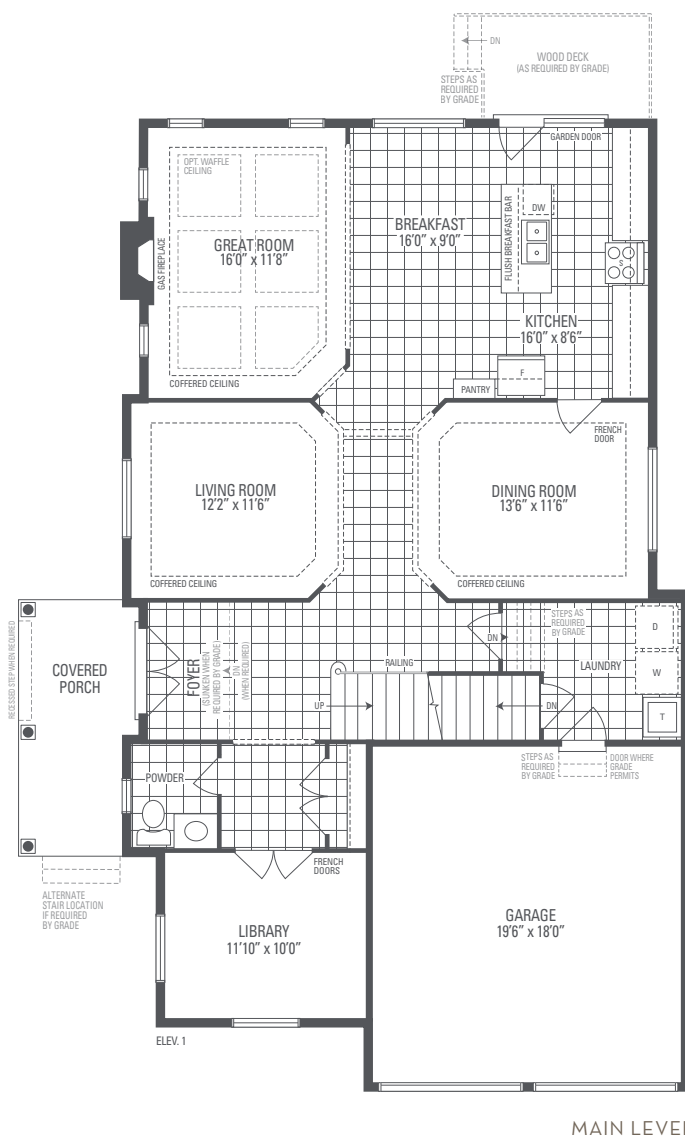
Elevation 1 • 3,189 sq.ft.

Main exterior building materials for front include:  
Elev. 1 • Cultured Stone + Brick  
Barquentine Estates Ph. 3 • 40' • February 2022

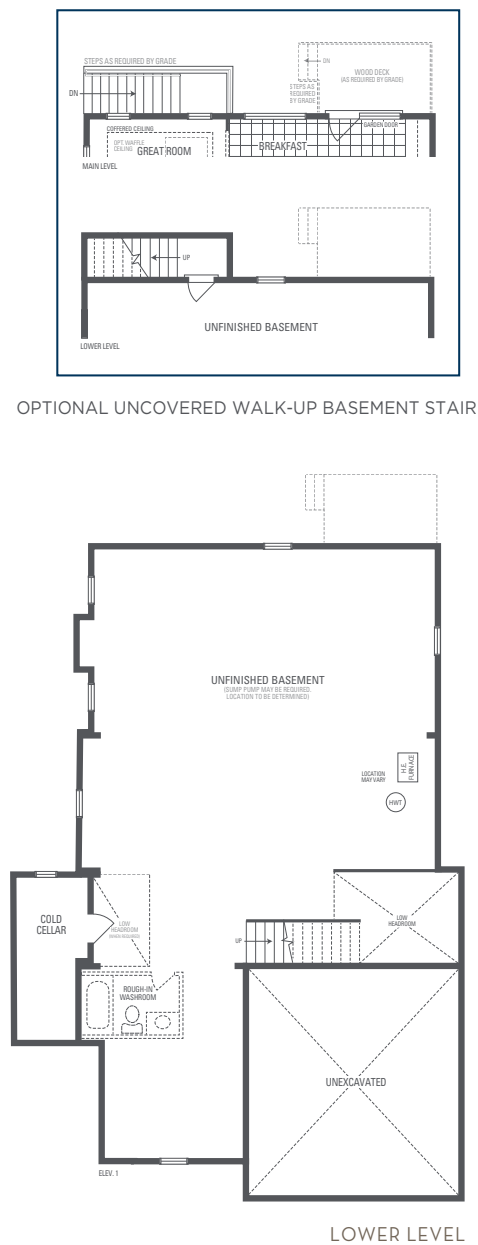
NOTE: Orientation of home may be reversed and purchaser agrees to accept the same. Unit setback and roofline may vary due to siting. Steps may vary at any exterior entrance ways due to grading variance. All dimensions are approximate only and subject to change without notice. Actual usable floor space may vary from stated floor area. All renderings are artist's concept, specifications, architectural and mechanical detailing are subject to minor modifications. Mechanical wall encroachments may be required into finished rooms and garage spaces. E.&O.E.



Elevation 1 • 3,189 sq.ft.

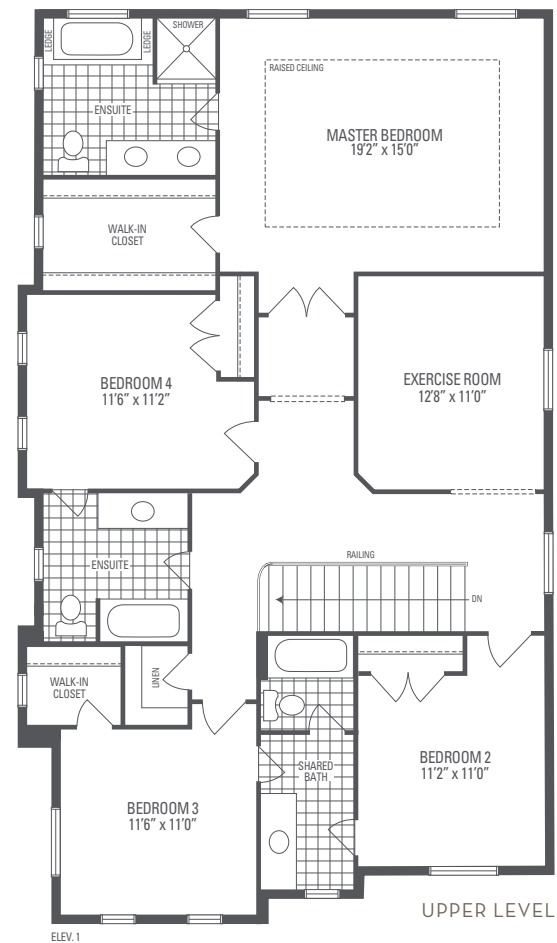


## MAIN LEVEL

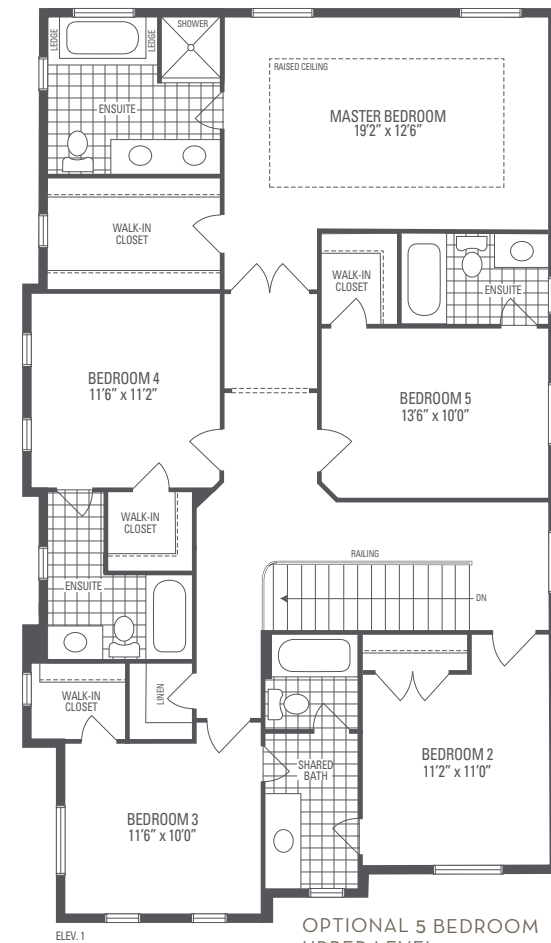


LOWER LEVEL

### OPTIONAL UNCOVERED WALK-UP BASEMENT STAIR



UPPER LEVEL



### OPTIONAL 5 BEDROOM UPPER LEVEL





## CARNEGIE 12

Elevation 2 • 3,170 sq.ft.

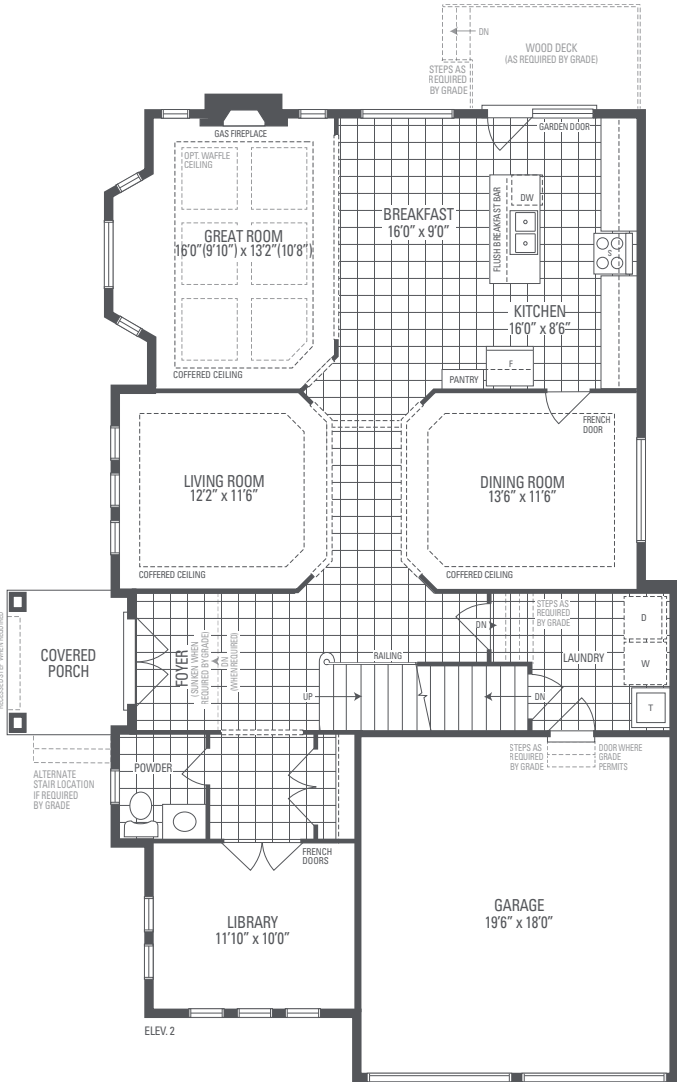
Main exterior building materials for front include:  
Elev. 2 • Cultured Stone + Brick  
Barquentine Estates Ph. 3 • 40' • February 2022

NOTE: Orientation of home may be reversed and purchaser agrees to accept the same. Unit setback and roofline may vary due to siting. Steps may vary at any exterior entrance ways due to grading variance. All dimensions are approximate only and subject to change without notice. Actual usable floor space may vary from stated floor area. All renderings are artist's concept, specifications, architectural and mechanical detailing are subject to minor modifications. Mechanical wall encroachments may be required into finished rooms and garage spaces. E.&O.E.

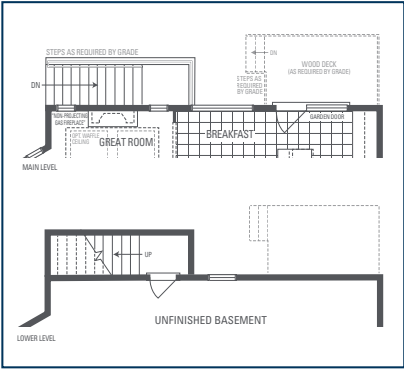


# CARNEGIE 12

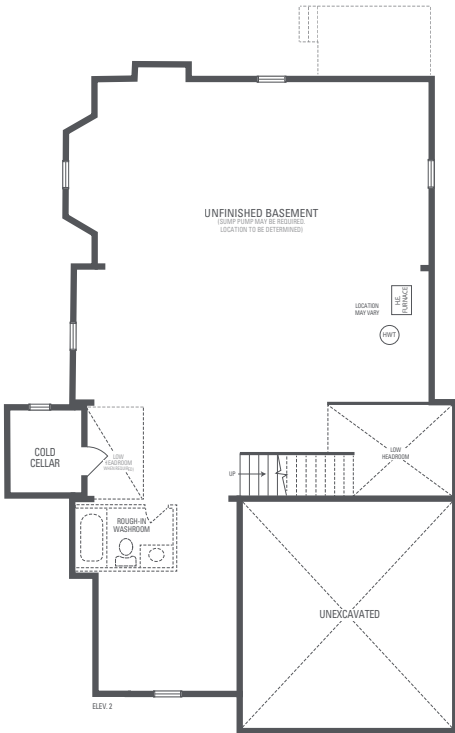
Elevation 2 • 3,170 sq.ft



## MAIN LEVEL



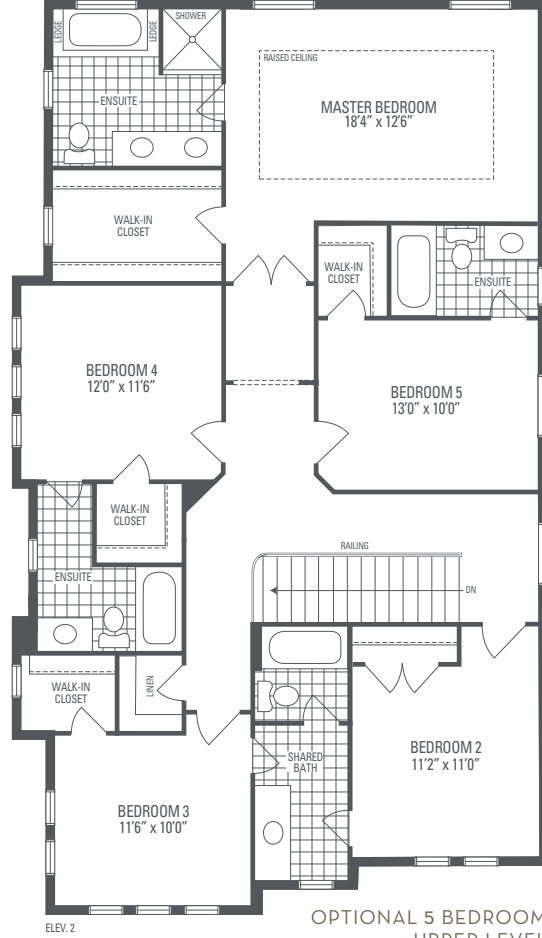
### OPTIONAL UNCOVERED WALK-UP BASEMENT STAIR



LOWER LEVE



UPPER LEVEL



## OPTIONAL 5 BEDROOM UPPER LEVEL





ELEVATION. 3

# CARNEGIE 12

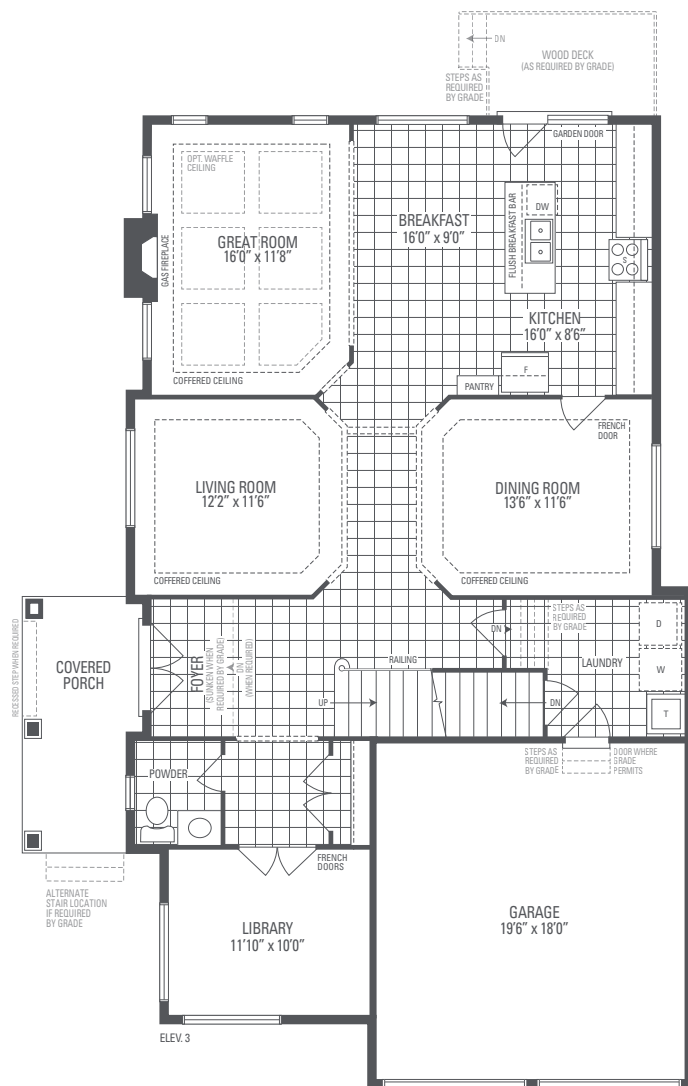
Elevation 3 • 3,189 sq.ft.

Main exterior building materials for front include:  
Elev. 3 • Cultured Stone + Brick + Applied Stucco  
Barquentine Estates Ph. 3 • 40' • February 2022

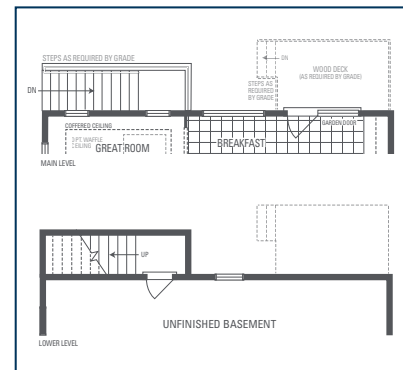
NOTE: Orientation of home may be reversed and purchaser agrees to accept the same. Unit setback and roofline may vary due to siting. Steps may vary at any exterior entrance ways due to grading variance. All dimensions are approximate only and subject to change without notice. Actual usable floor space may vary from stated floor area. All renderings are artist's concept, specifications, architectural and mechanical detailing are subject to minor modifications. Mechanical wall encroachments may be required into finished rooms and garage spaces. E.&O.E.



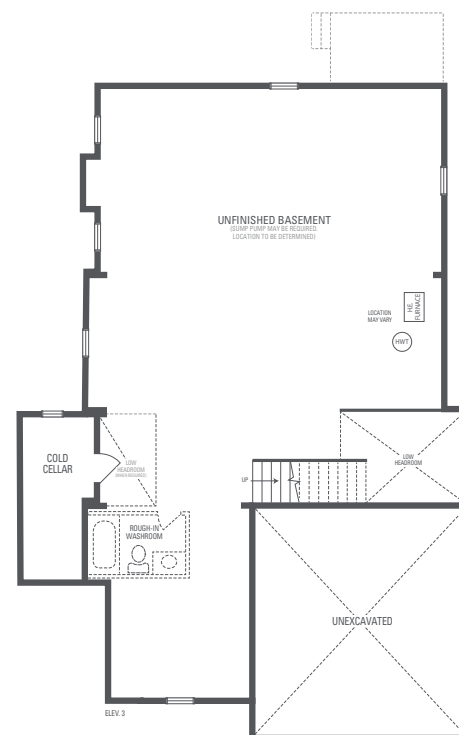
Elevation 3 • 3,189 sq.ft.



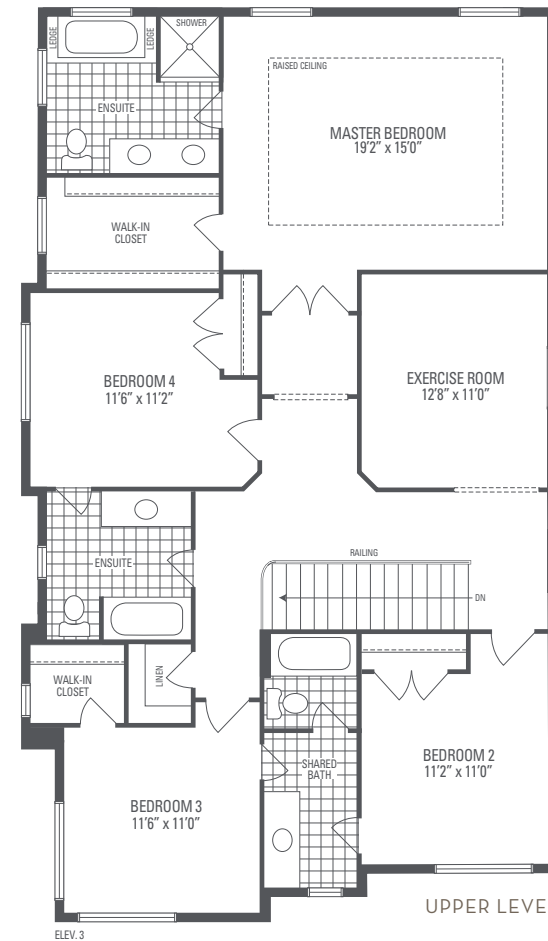
MAIN LEVEL



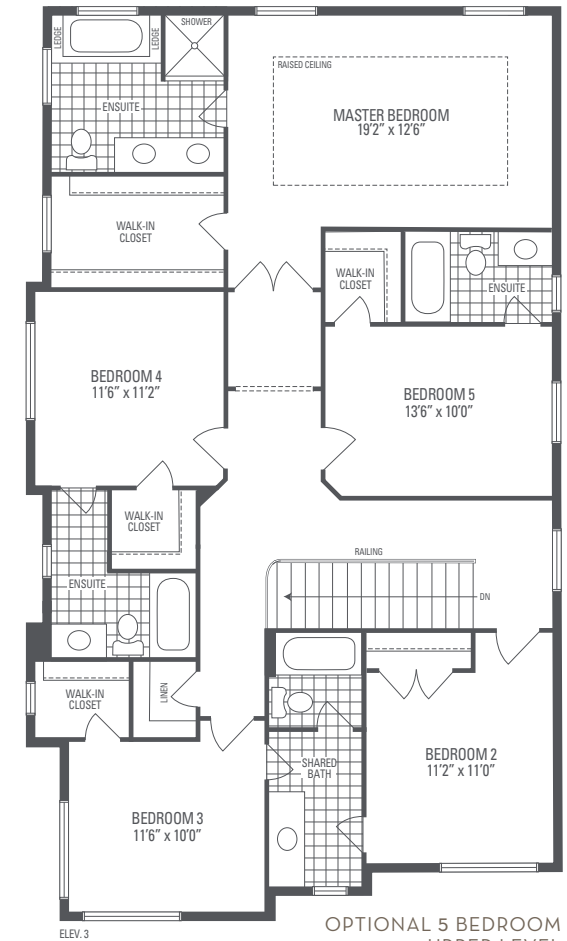
OPTIONAL UNCOVERED WALK-UP BASEMENT STAIR



LOWER LEVEL



UPPER LEVEL



### OPTIONAL 5 BEDROOM UPPER LEVEL





# MANHATTAN 14

Elevation 1 • 2,865 sq.ft. • FOR LOT 58 ONLY

Main exterior building materials for front include:  
Elev. 1 • Cultured Stone + Brick  
Barquentine Estates Ph. 3 • 40' • February 2022

NOTE: Orientation of home may be reversed and purchaser agrees to accept the same. Unit setback and roofline may vary due to siting. Steps may vary at any exterior entrance ways due to grading variance. All dimensions are approximate only and subject to change without notice. Actual usable floor space may vary from stated floor area. All renderings are artist's concept, specifications, architectural and mechanical detailing are subject to minor modifications. Mechanical wall encroachments may be required into finished rooms and garage spaces. E.&O.E.



# MANHATTAN 14

Elevation 1 • 2,865 sq.ft.  
FOR LOT 58 ONLY

