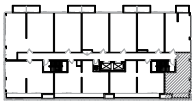
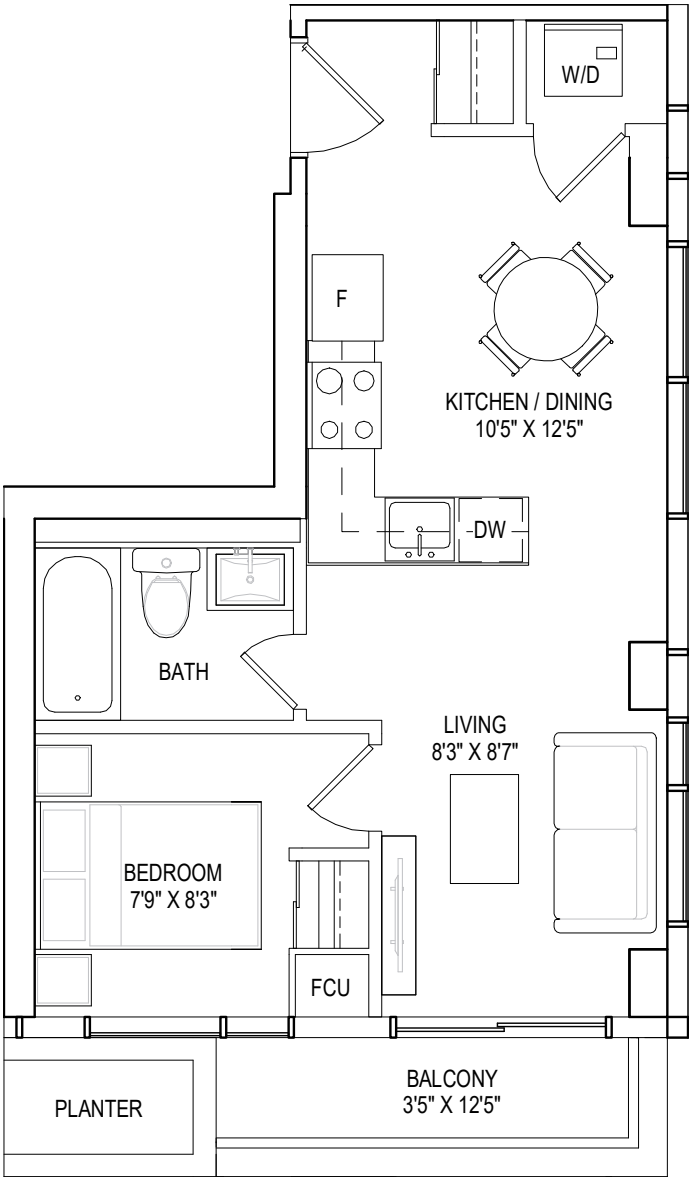


I BEDROOM, I BATHROOM

interior living area | 471 sf

outdoor living area | 53 sf

total living area | 524 sf



10TH FLOOR

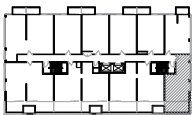
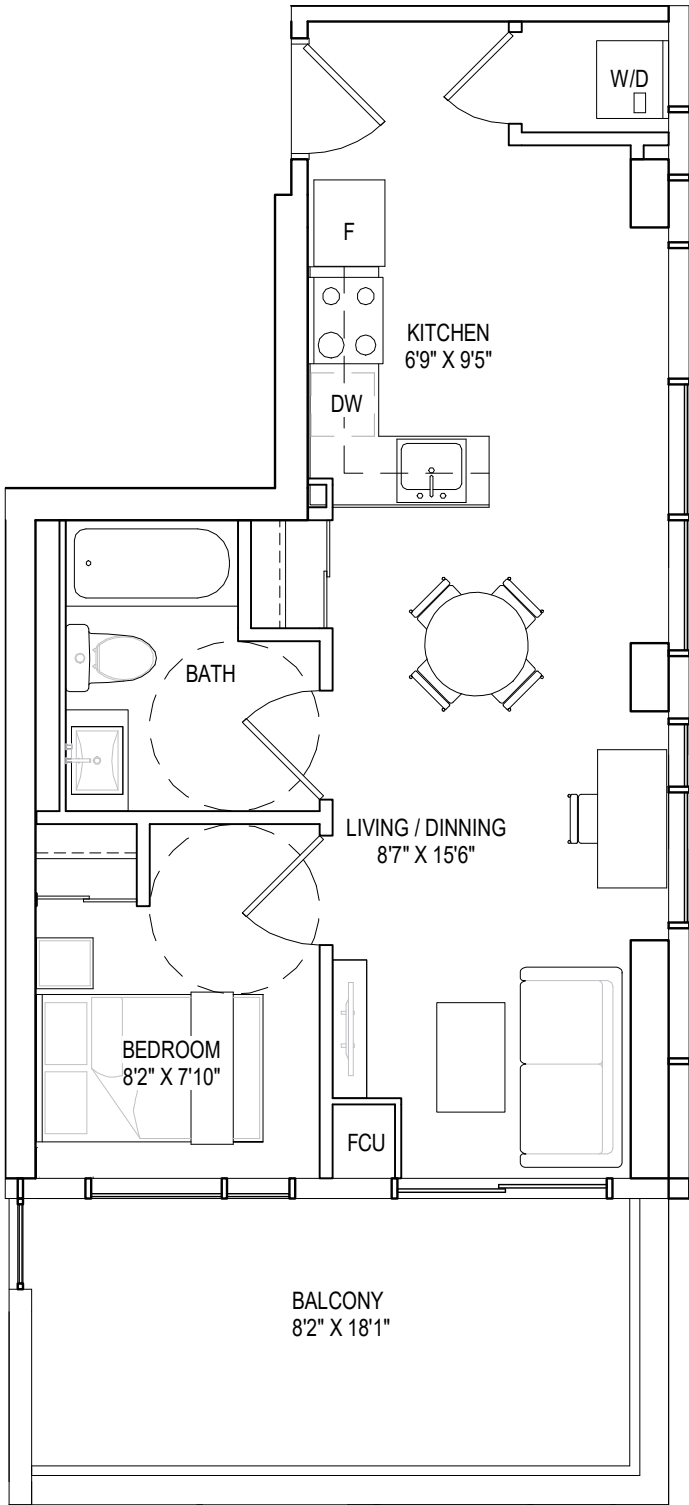


All dimensions are approximate and subject to normal construction variances. Sizes and specifications are subject to change without notice. Furniture is displayed for illustrative purposes only and does not necessarily reflect the electrical plan for the suite. All suites are sold unfurnished. E&O.E. 95 Development Inc. All Rights Reserved 2022.

interior living area | 560 sf

outdoor living area | 171 sf

total living area | 731 sf

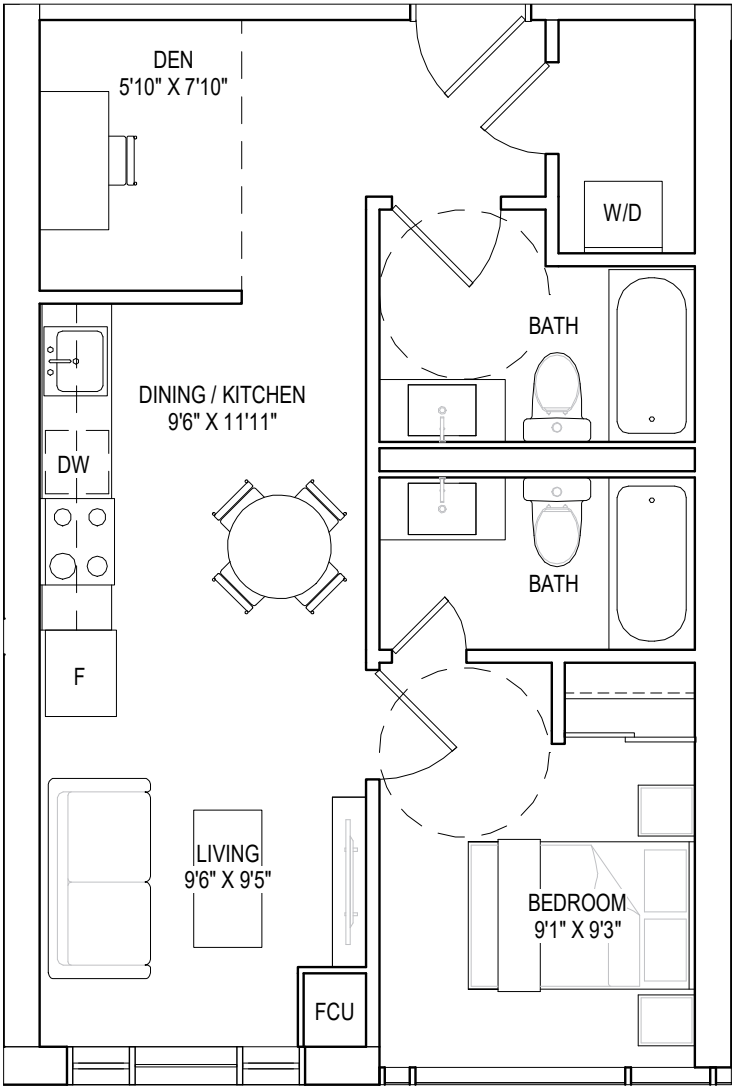


9TH FLOOR



I BEDROOM + DEN, 2 BATHROOMS

interior living area | 626 sf
total living area | 626 sf



GROUND FLOOR



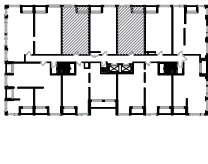
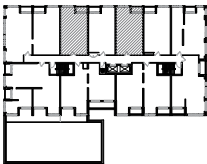
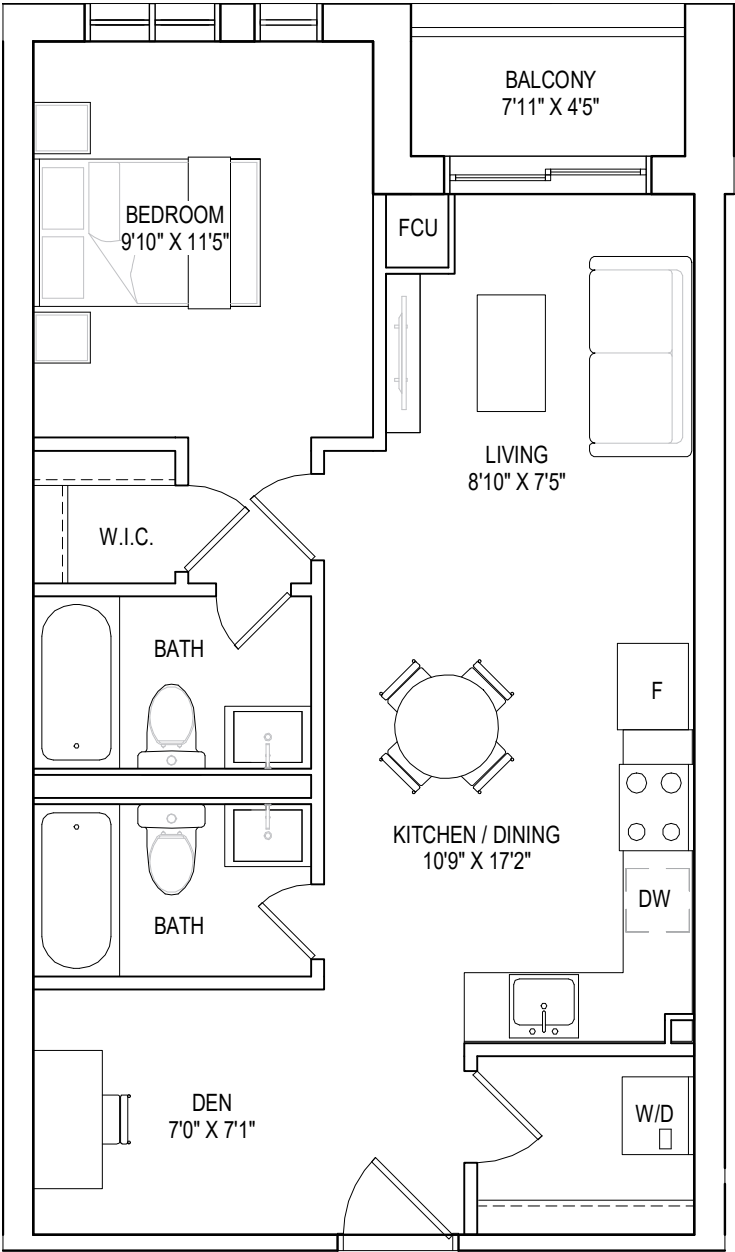
All dimensions are approximate and subject to normal construction variances. Sizes and specifications are subject to change without notice. Furniture is displayed for illustrative purposes only and does not necessarily reflect the electrical plan for the suite. All suites are sold unfurnished. E&O.E. 95 Development Inc. All Rights Reserved 2022.

I BEDROOM + DEN, 2 BATHROOMS

interior living area | 684 sf

outdoor living area | 35 sf

total living area | 719 sf

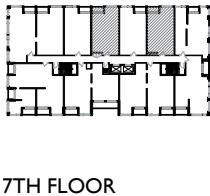
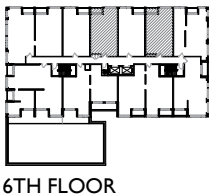
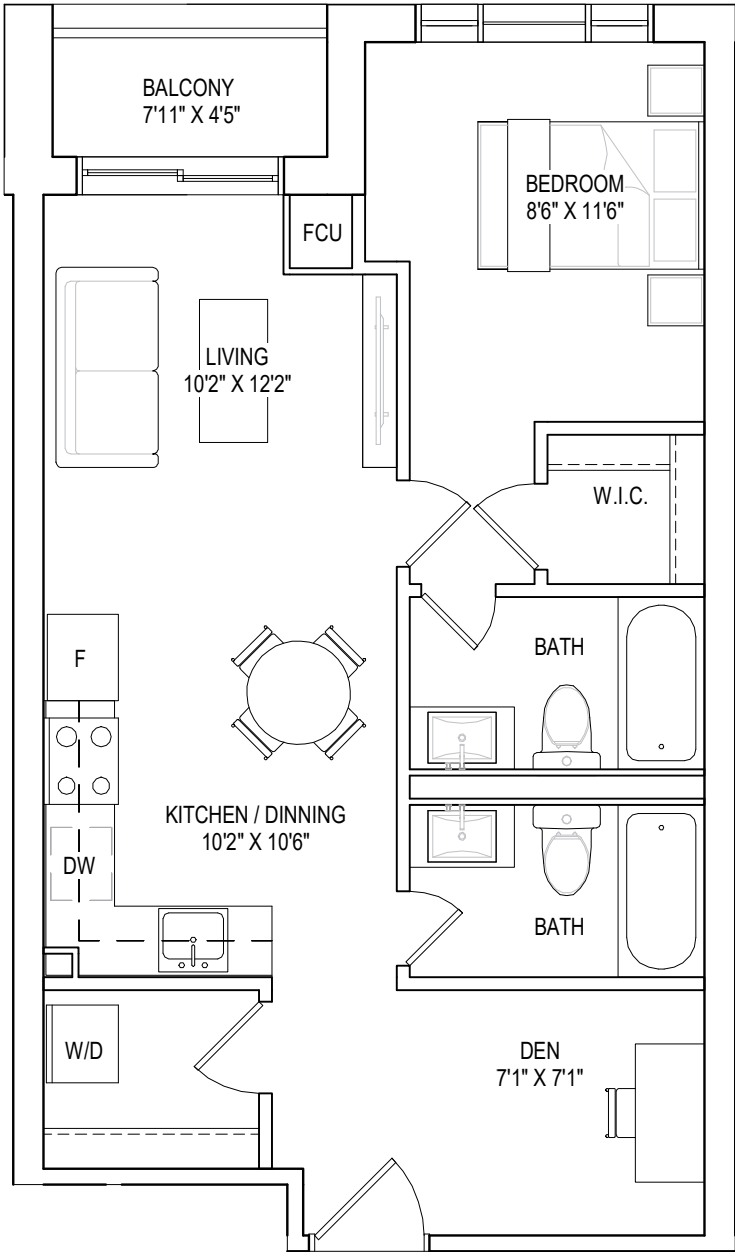


I BEDROOM + DEN, 2 BATHROOMS

interior living area | 670 sf

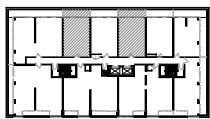
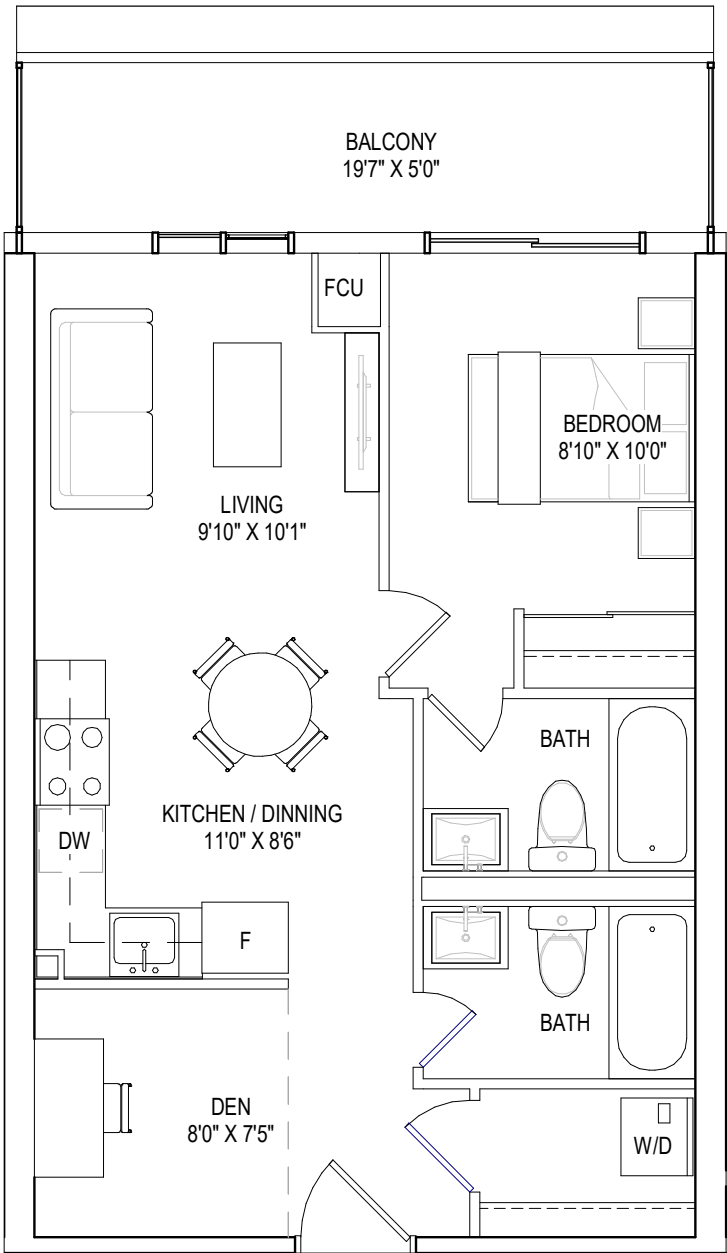
outdoor living area | 35 sf

total living area | 705 sf



I BEDROOM + DEN, 2 BATHROOMS

interior living area | 591 sf
outdoor living area | 114 sf
total living area | 705 sf



8TH FLOOR



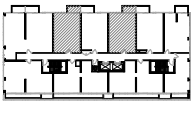
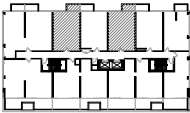
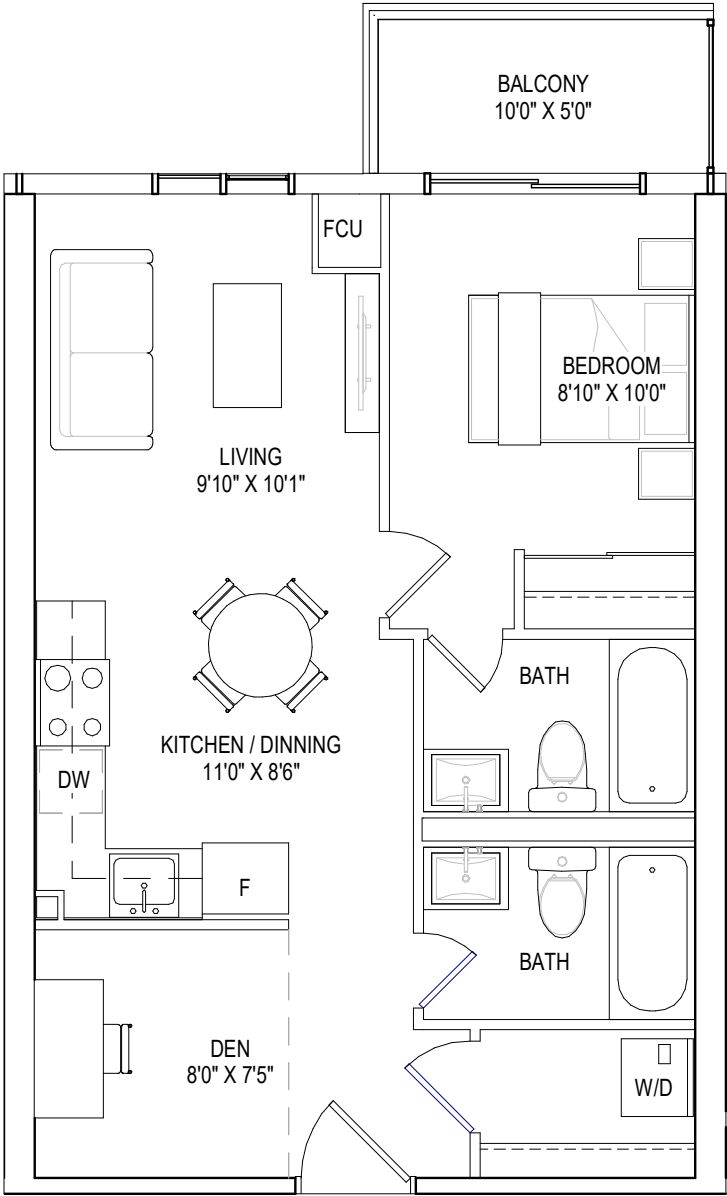
All dimensions are approximate and subject to normal construction variances. Sizes and specifications are subject to change without notice. Furniture is displayed for illustrative purposes only and does not necessarily reflect the electrical plan for the suite. All suites are sold unfurnished. E&O.E. 95 Development Inc. All Rights Reserved 2022.

I BEDROOM + DEN, 2 BATHROOMS

interior living area | 591 sf

outdoor living area | 50 sf

total living area | 641 sf

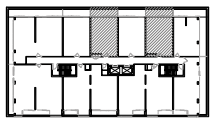
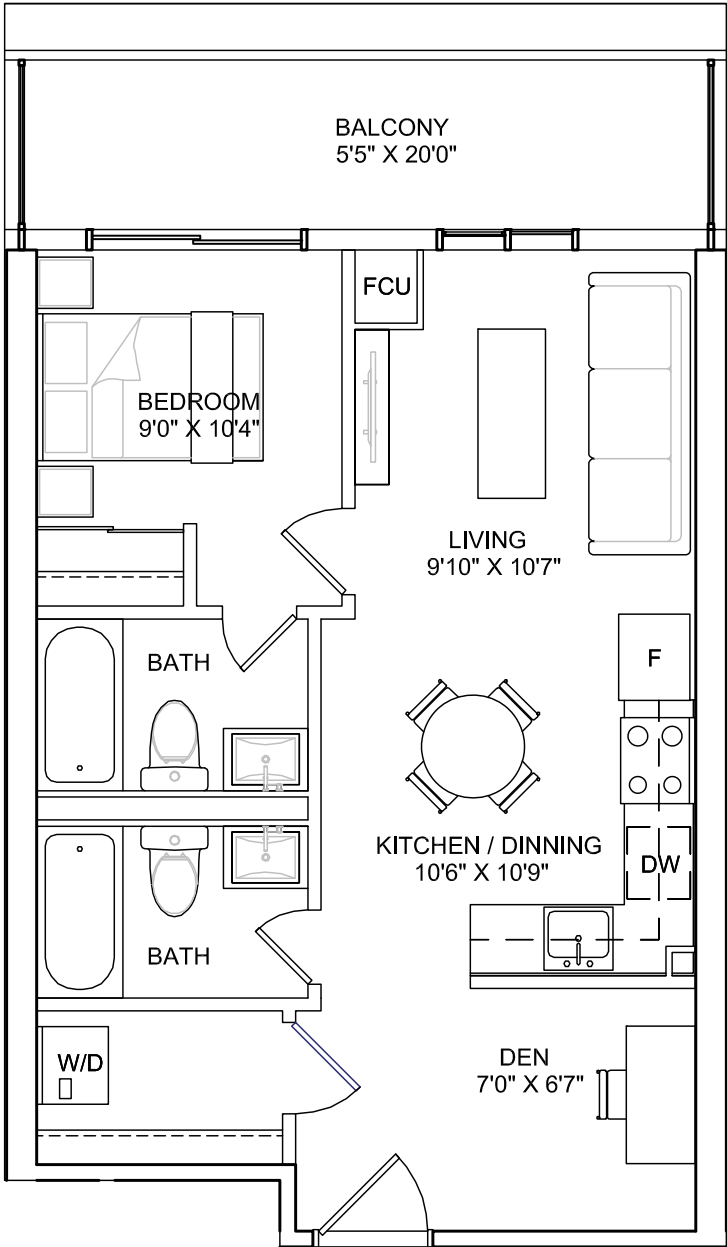


I BEDROOM + DEN, 2 BATHROOMS

interior living area | 577 sf

outdoor living area | 108 sf

total living area | 685 sf

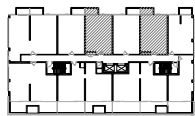
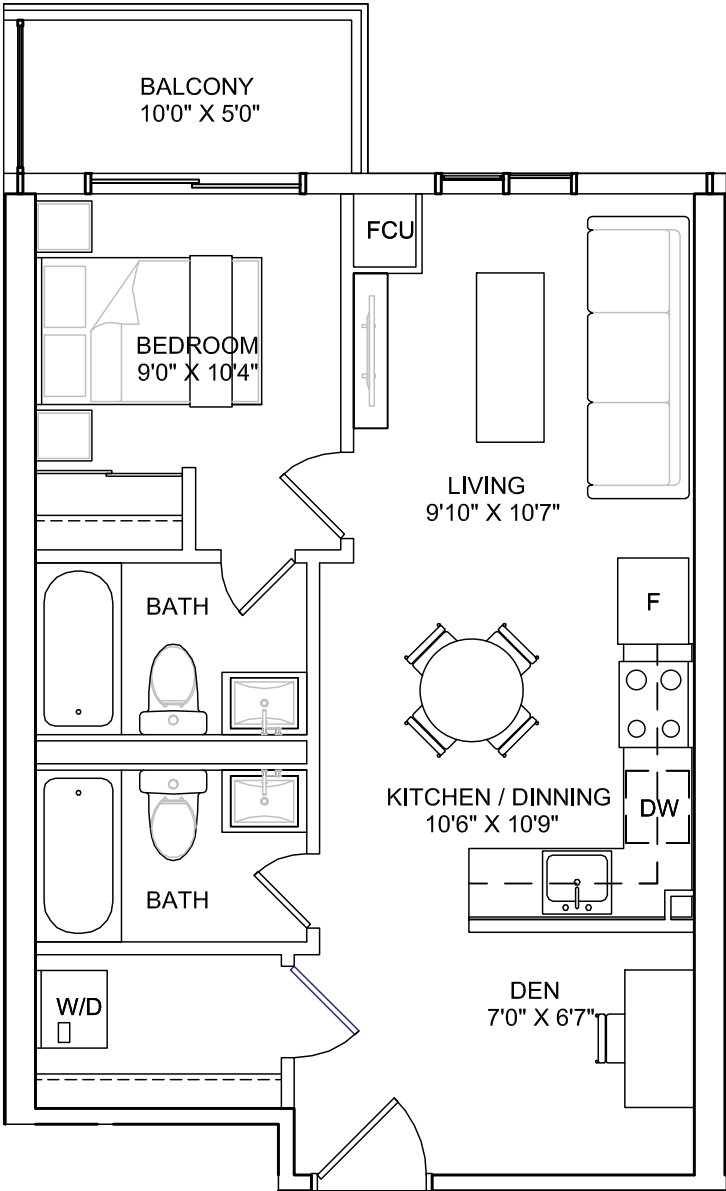


8TH FLOOR

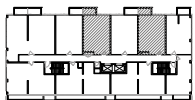


I BEDROOM + DEN, 2 BATHROOMS

interior living area | 577 sf
outdoor living area | 50 sf
total living area | 627 sf



9TH FLOOR

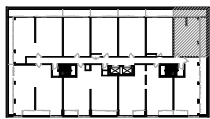
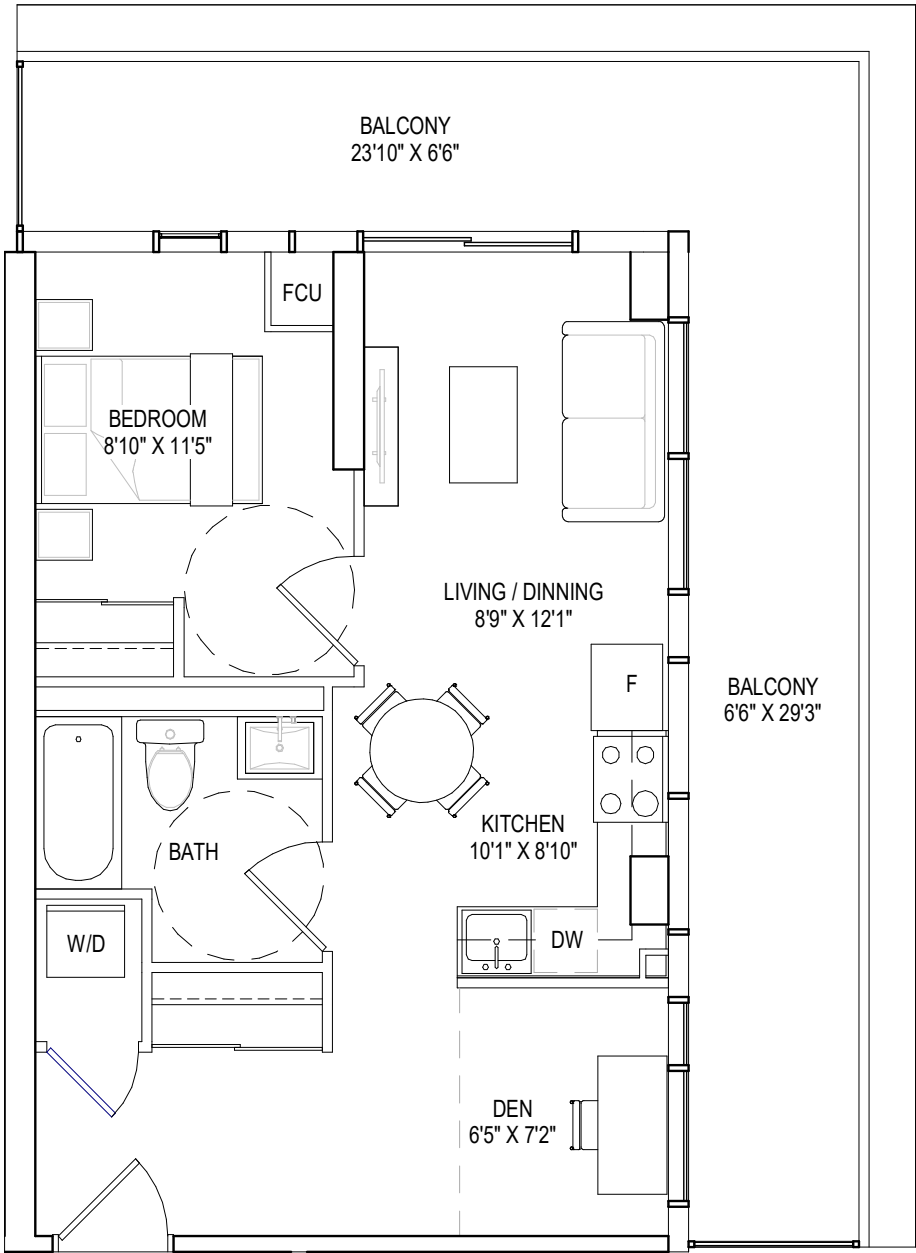


10TH FLOOR



I BEDROOM + DEN, I BATHROOM

interior living area | 569 sf
outdoor living area | 270 sf
total living area | 839 sf

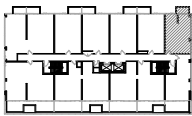
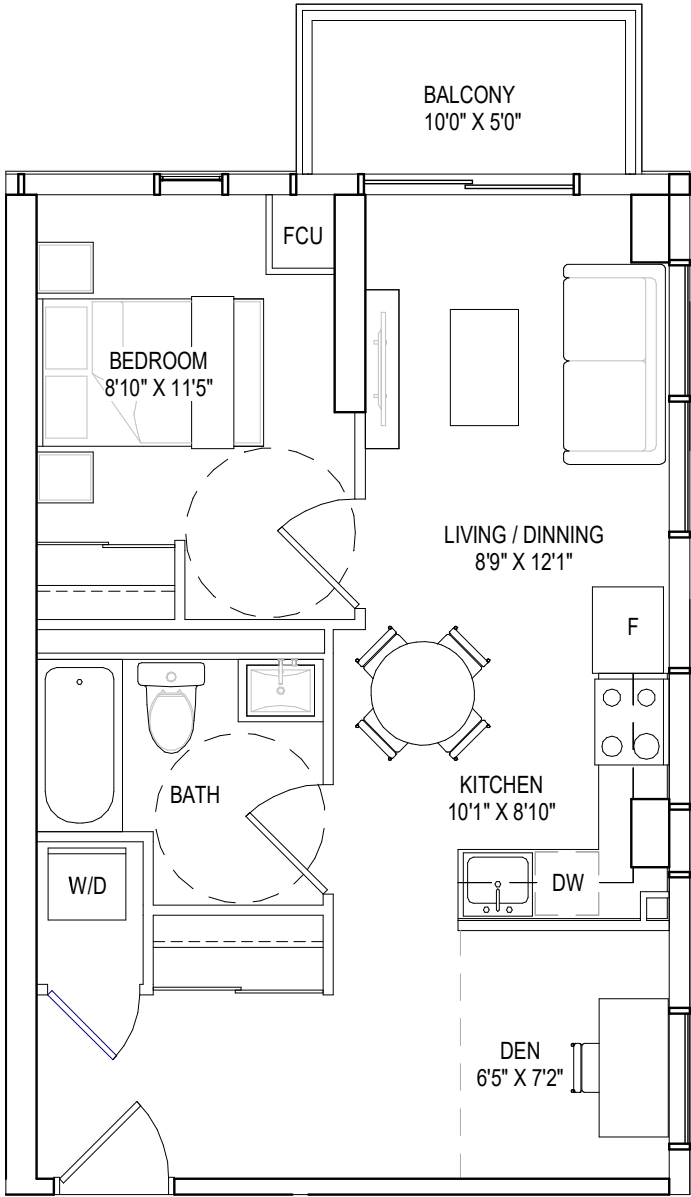


8TH FLOOR

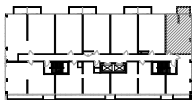


I BEDROOM + DEN, I BATHROOM

interior living area | 569 sf
outdoor living area | 40 sf
total living area | 609 sf



9TH FLOOR



10TH FLOOR

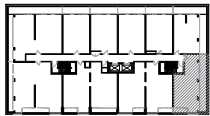
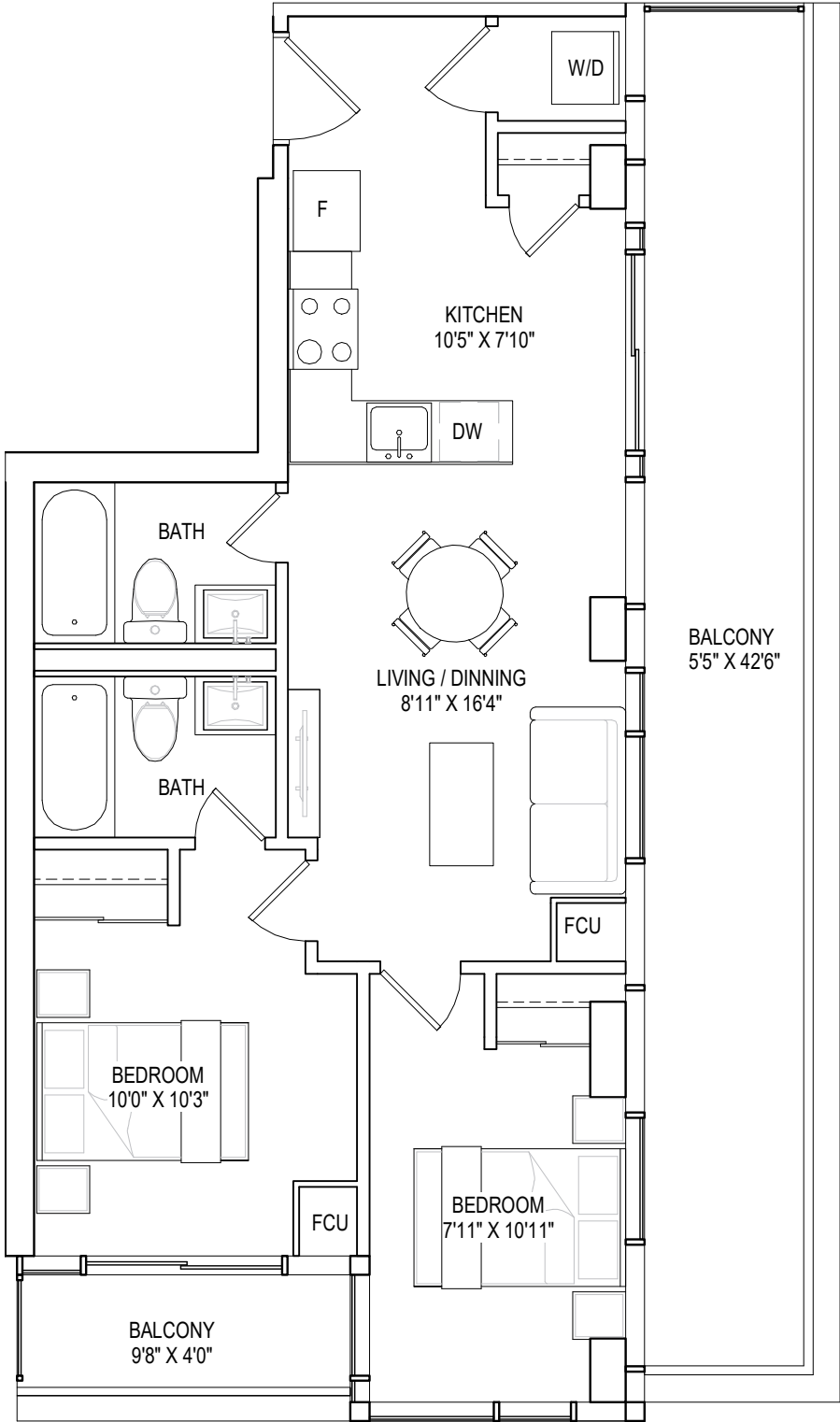


2 BEDROOMS, 2 BATHROOMS

interior living area | 697 sf

outdoor living area | 263 sf

total living area | 960 sf



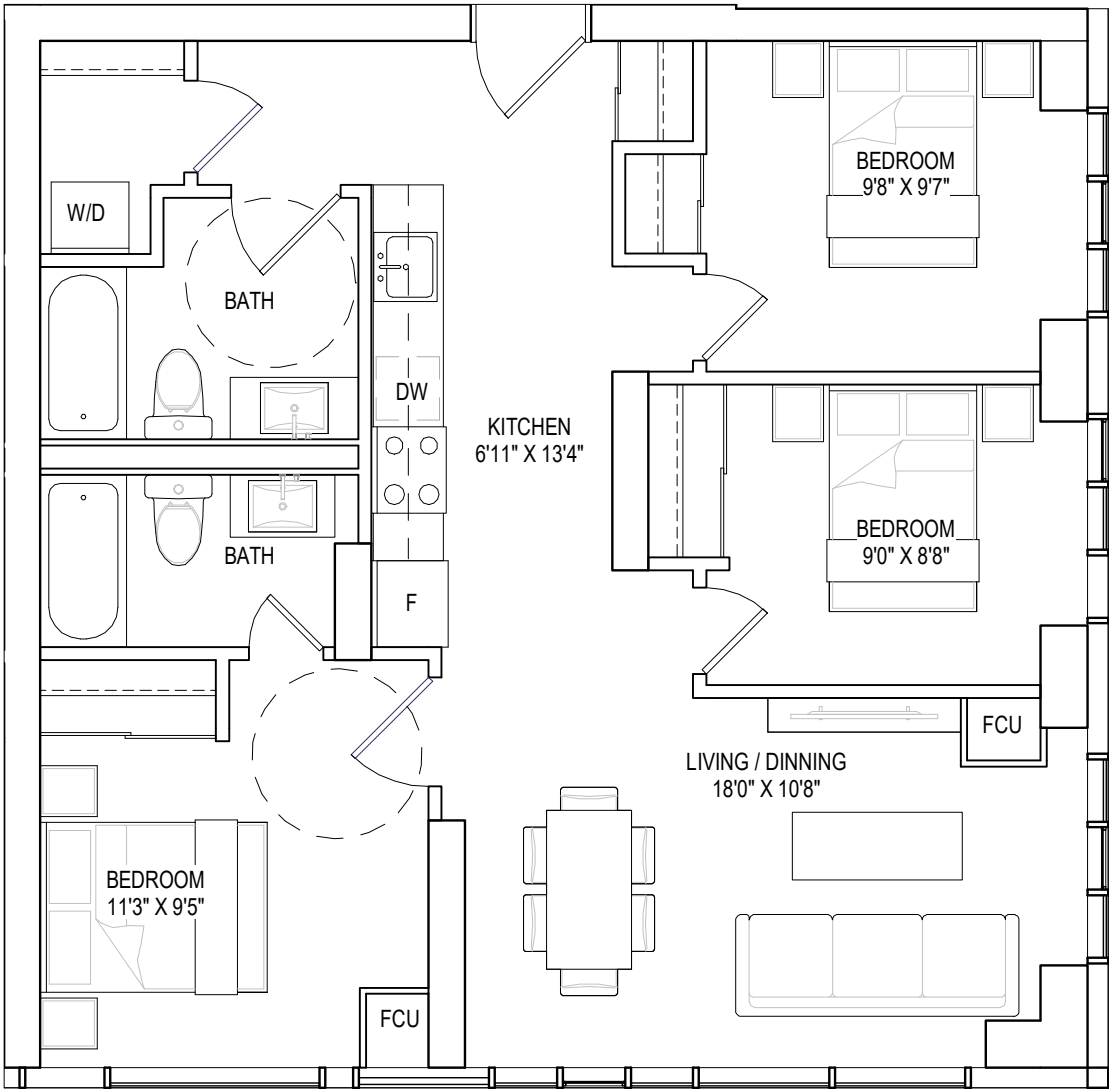
8TH FLOOR



All dimensions are approximate and subject to normal construction variances. Sizes and specifications are subject to change without notice. Furniture is displayed for illustrative purposes only and does not necessarily reflect the electrical plan for the suite. All suites are sold unfurnished. E&O.E. 95 Development Inc. All Rights Reserved 2022.

3 BEDROOMS, 2 BATHROOMS

interior living area | 988 sf
total living area | 988 sf



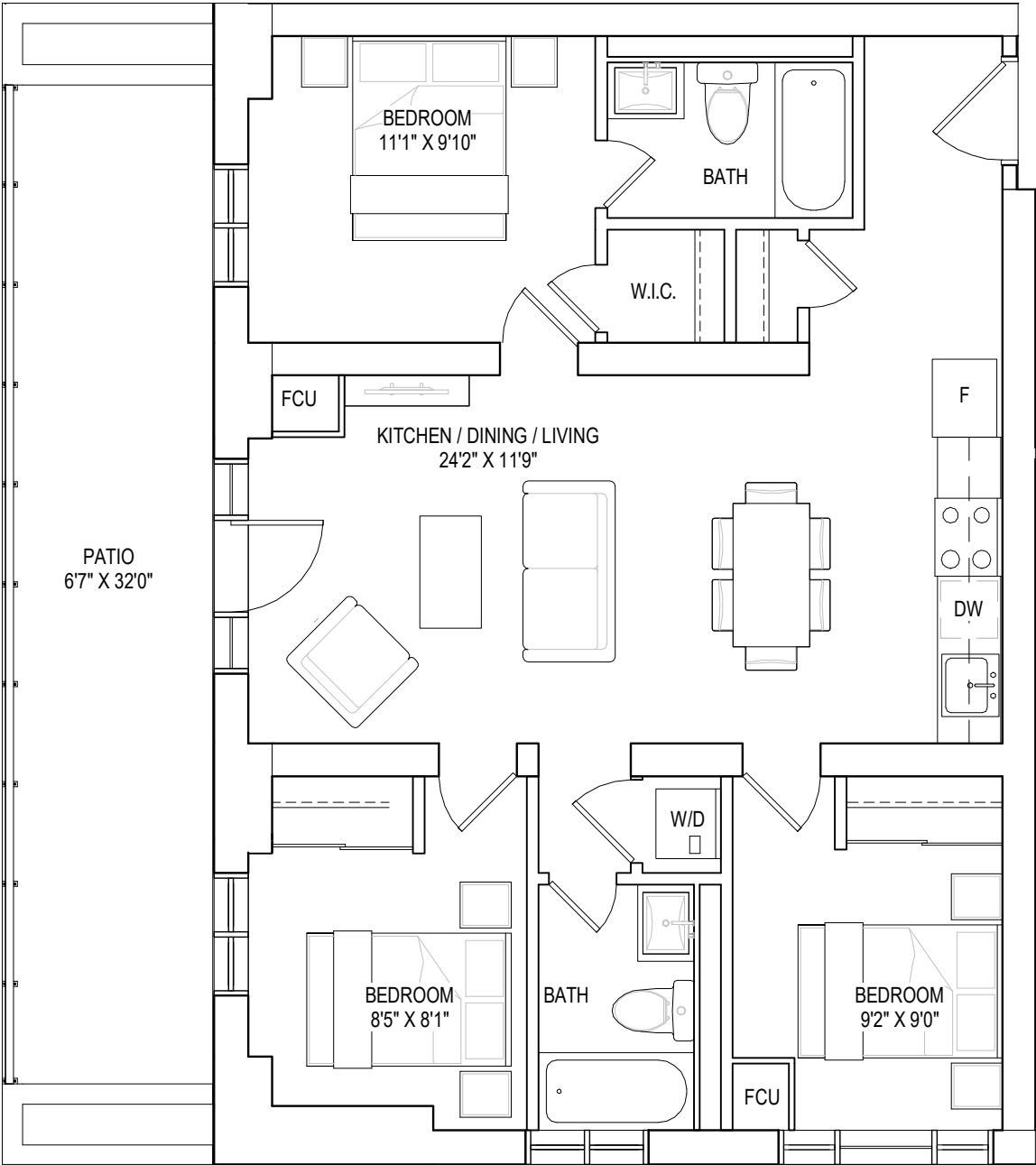
GROUND FLOOR



All dimensions are approximate and subject to normal construction variances. Sizes and specifications are subject to change without notice. Furniture is displayed for illustrative purposes only and does not necessarily reflect the electrical plan for the suite. All suites are sold unfurnished. E&O.E. 95 Development Inc. All Rights Reserved 2022.

3 BEDROOMS, 2 BATHROOMS

interior living area | 948 sf
outdoor living area | 216 sf
total living area | 1164 sf



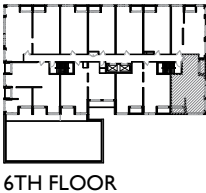
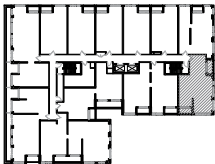
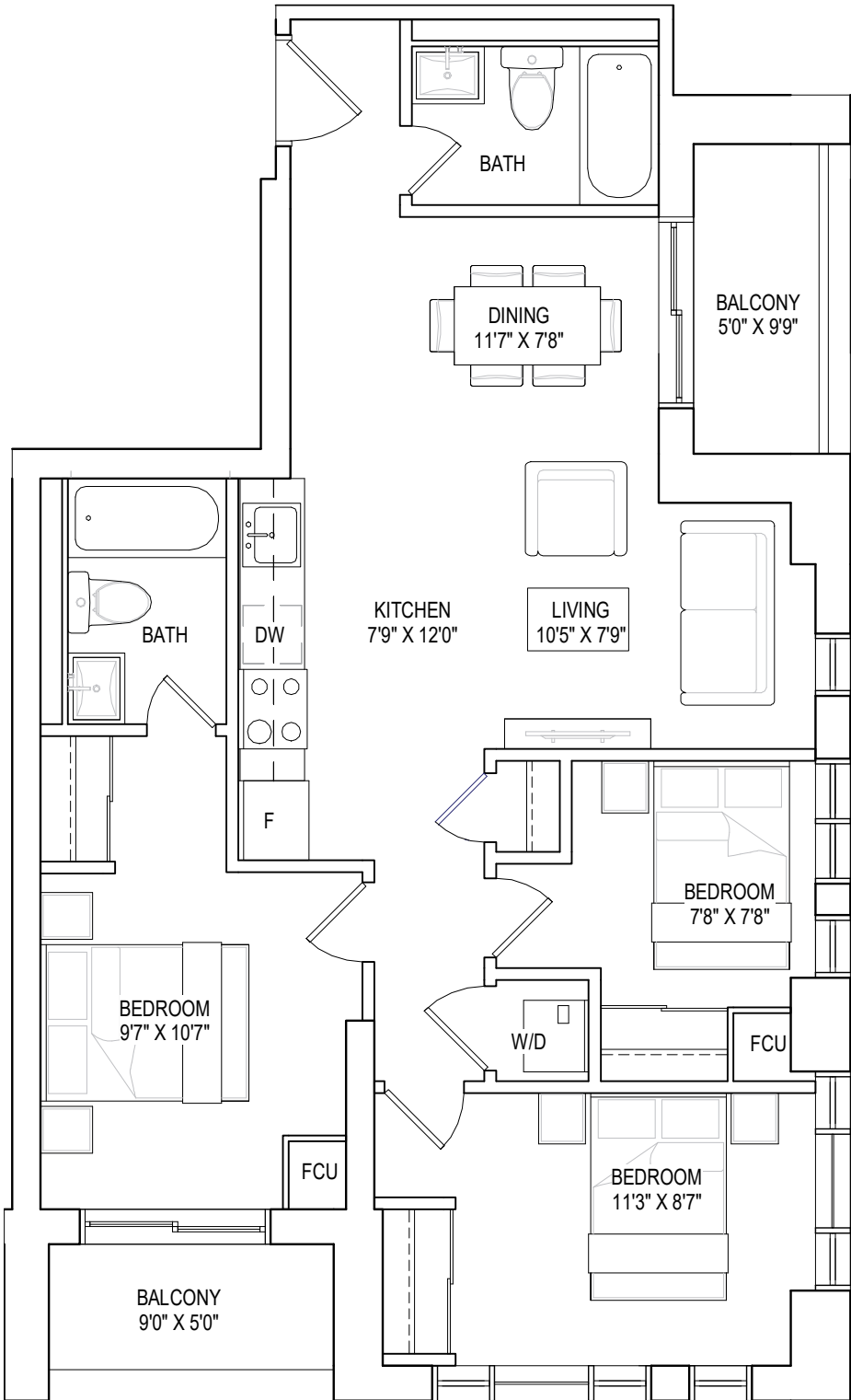
GROUND FLOOR



All dimensions are approximate and subject to normal construction variances. Sizes and specifications are subject to change without notice. Furniture is displayed for illustrative purposes only and does not necessarily reflect the electrical plan for the suite. All suites are sold unfurnished. E&O.E. 95 Development Inc. All Rights Reserved 2022.

3 BEDROOMS, 2 BATHROOMS

interior living area | 909 sf
outdoor living area | 92 sf
total living area | 1001 sf

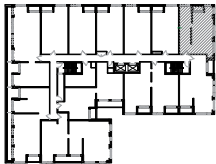
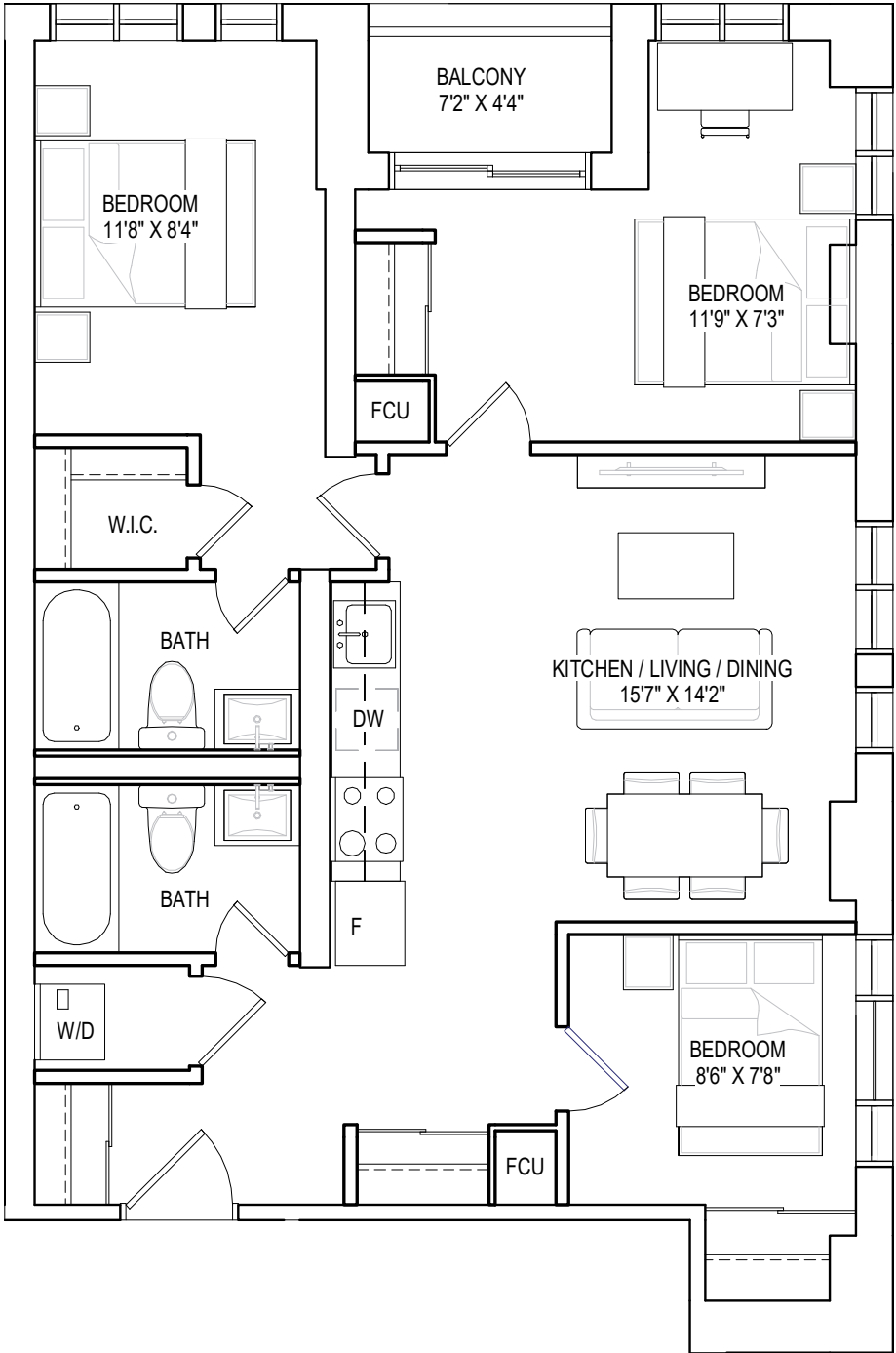


3 BEDROOMS, 2 BATHROOMS

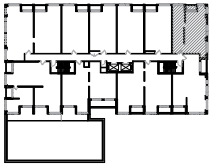
interior living area | 923 sf

outdoor living area | 32 sf

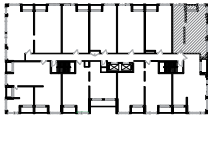
total living area | 955 sf



2ND - 5TH FLOOR



6TH FLOOR

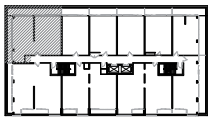
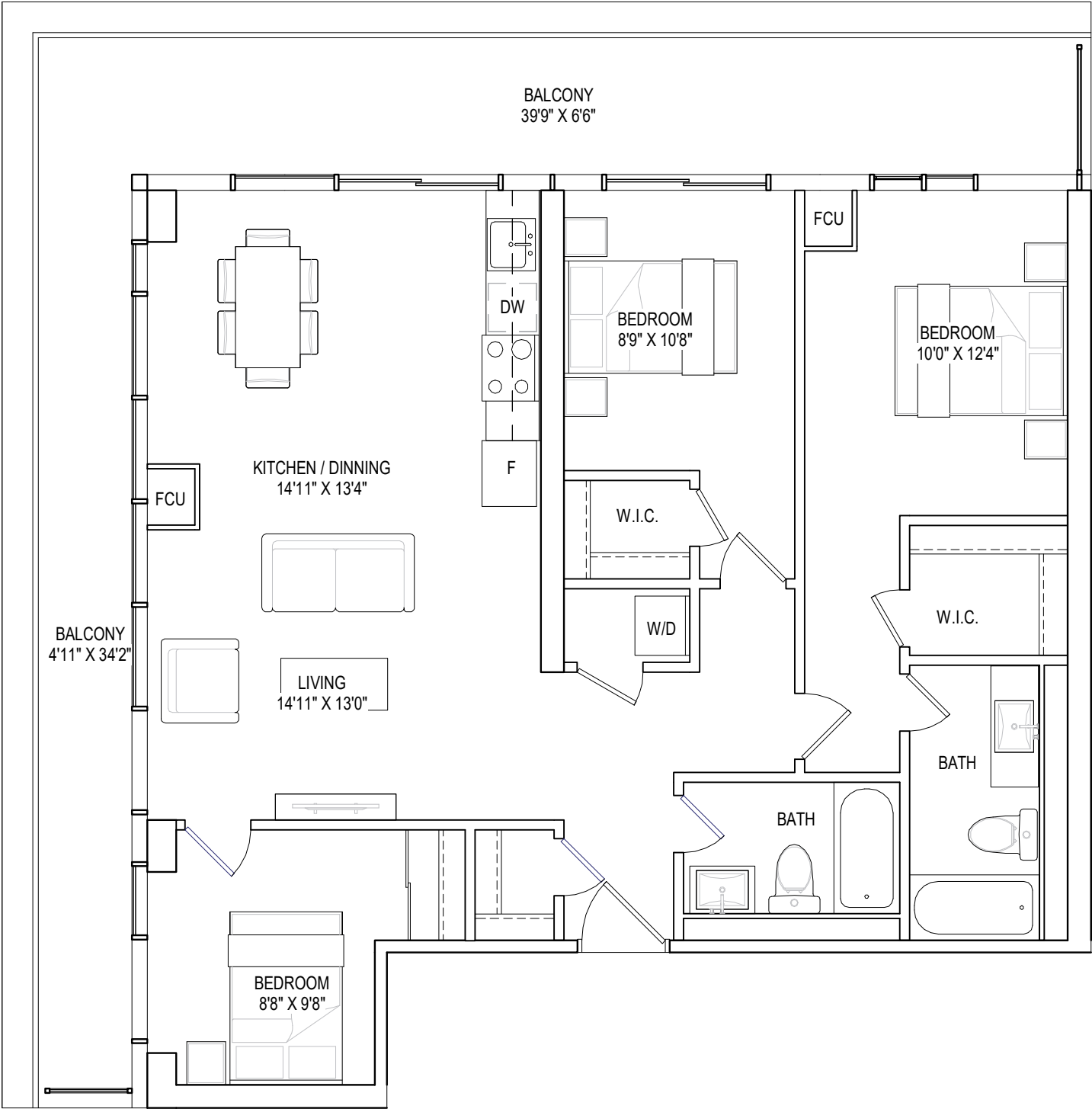


7TH FLOOR



3 BEDROOMS, 2 BATHROOMS

interior living area | 1116 sf
outdoor living area | 345 sf
total living area | 1461 sf



8TH FLOOR



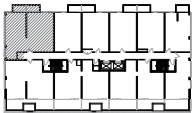
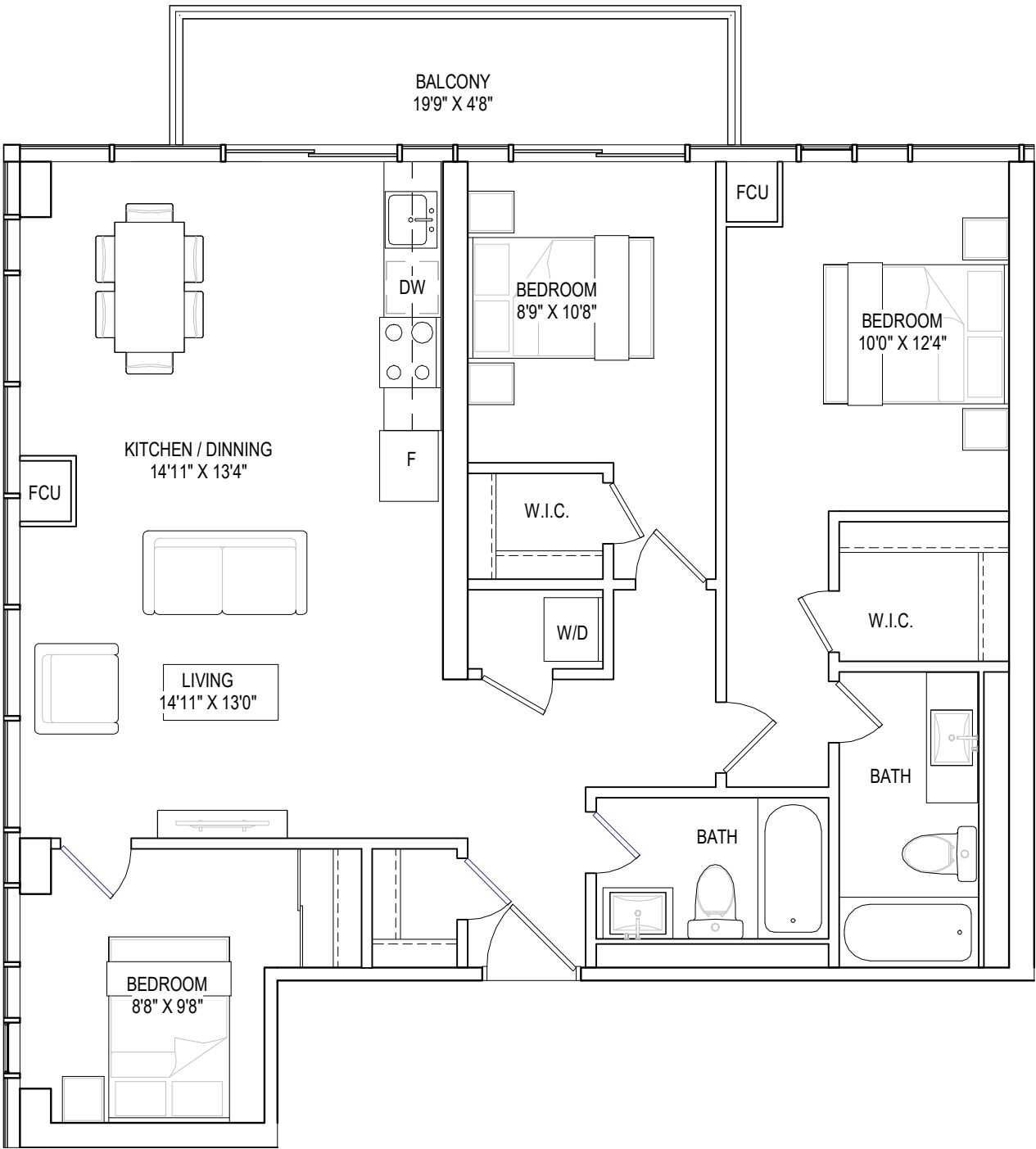
All dimensions are approximate and subject to normal construction variances. Sizes and specifications are subject to change without notice. Furniture is displayed for illustrative purposes only and does not necessarily reflect the electrical plan for the suite. All suites are sold unfurnished. E&O.E. 95 Development Inc. All Rights Reserved 2022.

3 BEDROOMS, 2 BATHROOMS

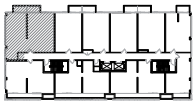
interior living area | 1116 sf

outdoor living area | 99 sf

total living area | 1215 sf



9TH FLOOR

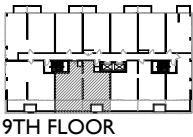


10TH FLOOR

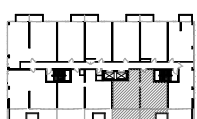


3 BEDROOMS, 2 BATHROOMS

interior living area | 980 sf
outdoor living area | 277 sf
total living area | 1250 sf

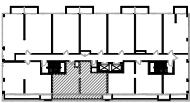
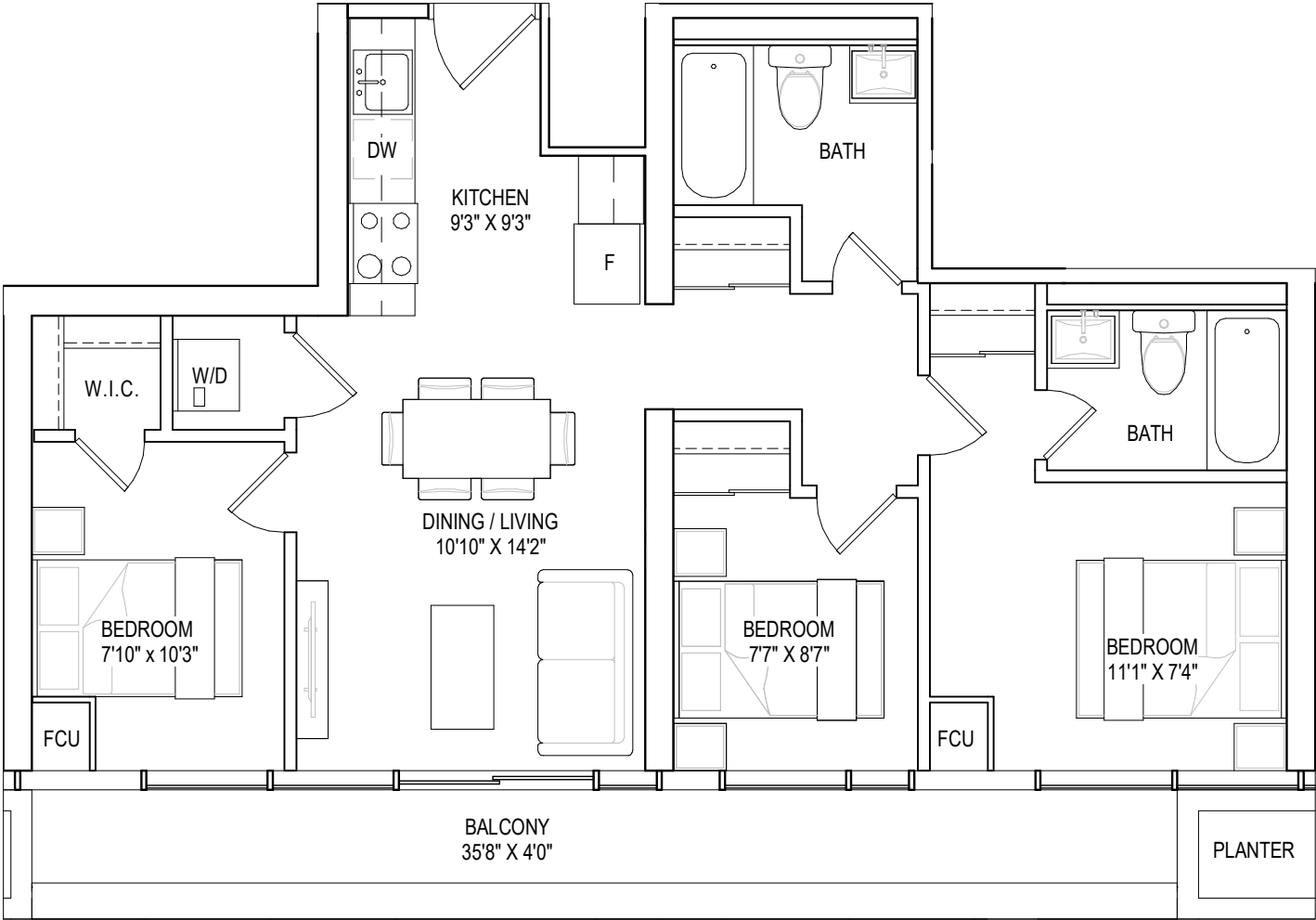


interior living area | 998 sf
outdoor living area | 270 sf
total living area | 1268 sf



3 BEDROOMS, 2 BATHROOMS

interior living area | 791 sf
outdoor living area | 144 sf
total living area | 935 sf



10TH FLOOR

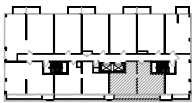
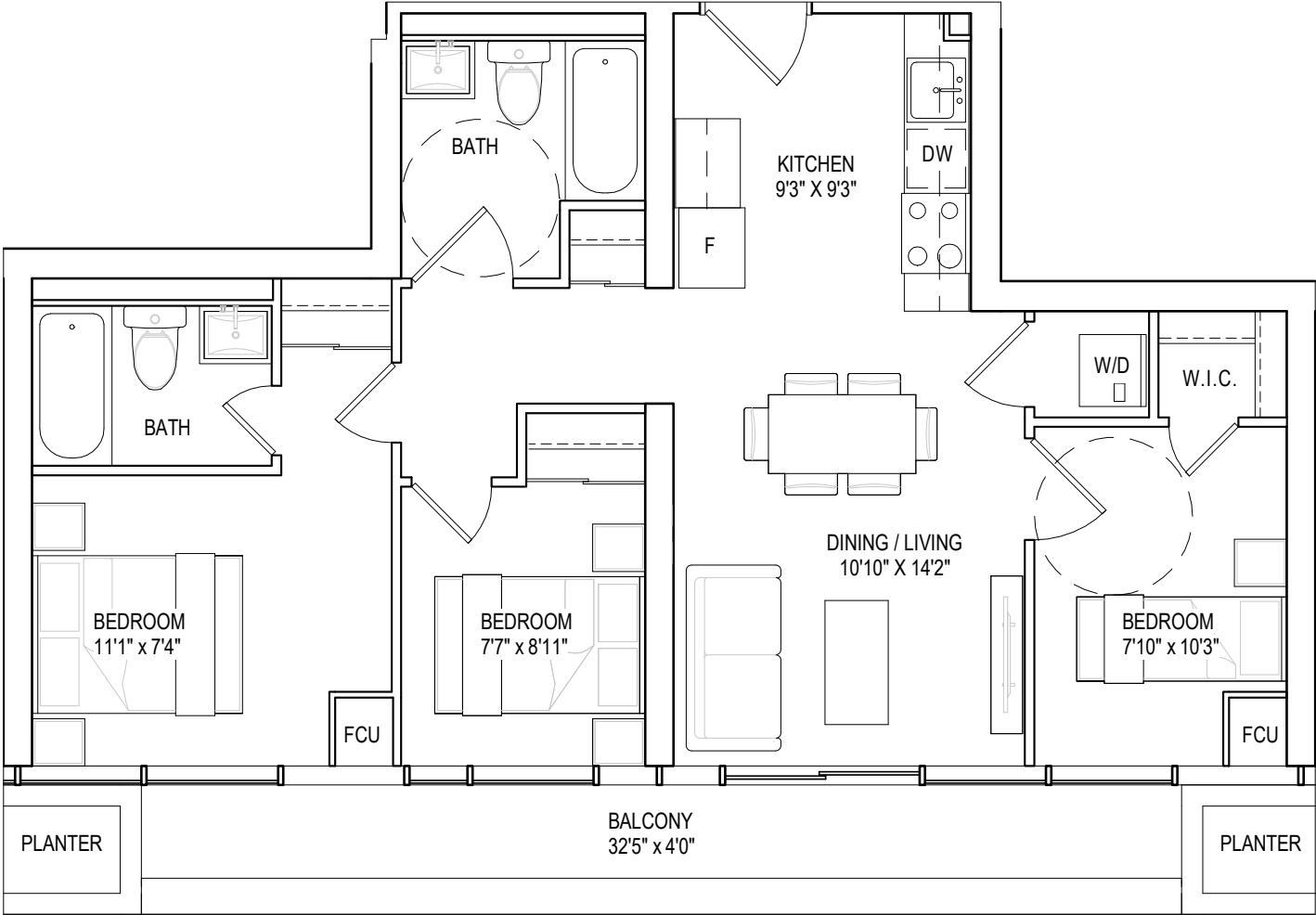


All dimensions are approximate and subject to normal construction variances. Sizes and specifications are subject to change without notice. Furniture is displayed for illustrative purposes only and does not necessarily reflect the electrical plan for the suite. All suites are sold unfurnished. E&O.E. 95 Development Inc. All Rights Reserved 2022.

interior living area | 813 sf

outdoor living area | 131 sf

total living area | 944 sf

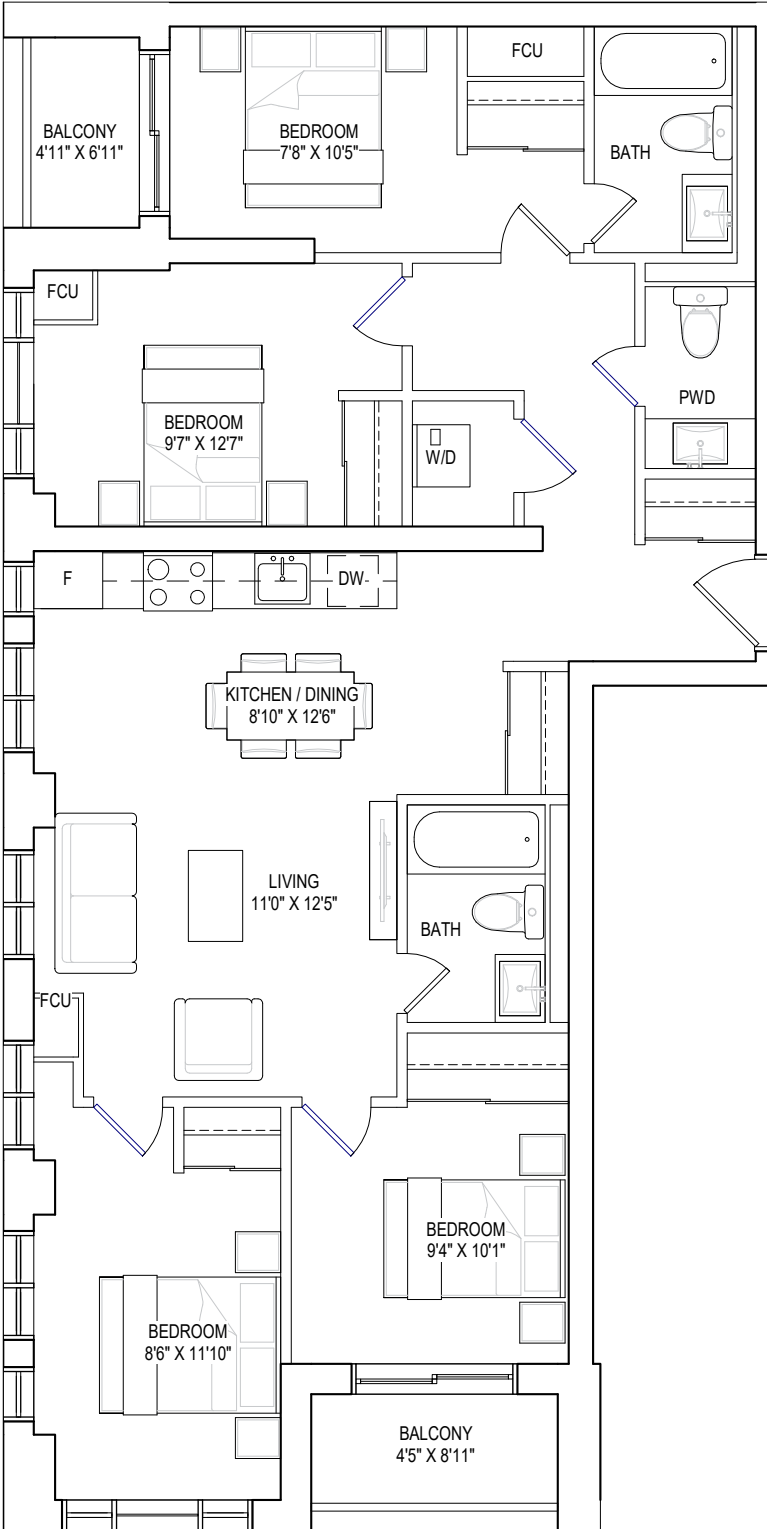


10TH FLOOR



4 BEDROOMS, 2.5 BATHROOMS

interior living area | 1226 sf
outdoor living area | 39 sf
total living area | 1265 sf



2ND - 5TH FLOOR



All dimensions are approximate and subject to normal construction variances. Sizes and specifications are subject to change without notice. Furniture is displayed for illustrative purposes only and does not necessarily reflect the electrical plan for the suite. All suites are sold unfurnished. E&O.E. 95 Development Inc. All Rights Reserved 2022.