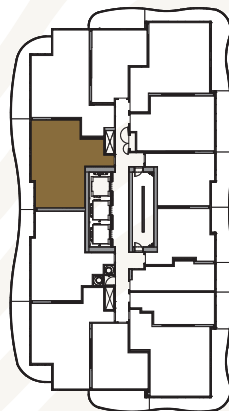


KING'S LANDING NORTH TOWER



SUITE 01 TWO BEDROOMS

TOTAL AREA	982 SQ.FT.
800 SQ.FT. INDOOR AREA	182 SQ.FT. OUTDOOR AREA

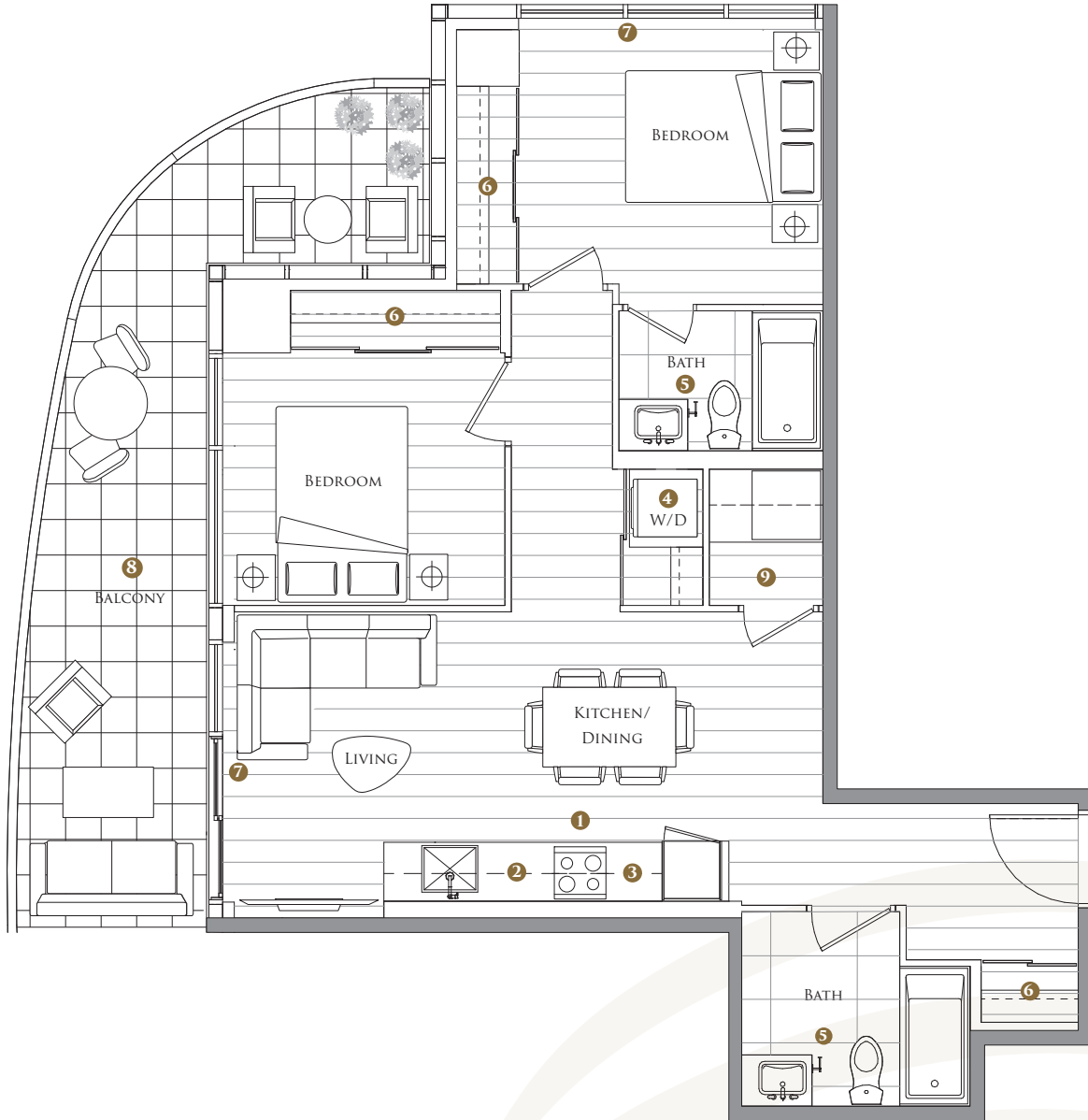


FEATURE HIGHLIGHTS

- 1 MIELE APPLIANCES
- 2 KITCHEN STORAGE ORGANIZER
- 3 BLUM KITCHEN HARDWARE
- 4 MIELE WASHER/DRYER
- 5 KOHLER/GROHE BATHROOM PLUMBING FIXTURES
- 6 CLOSET ORGANIZER SYSTEM
- 7 ROLLER - SHADES
- 8 COMPOSITE WOOD DECKING
- 9 WINE CELLAR

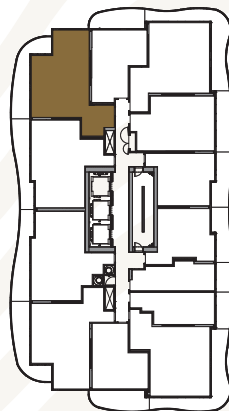
The developer reserves the right to make minor revisions to interior wall locations and exterior window system. All materials and drawings are approximate. Information is subject to change without notice. Actual square footage may vary from the stated floorplan. Furniture and upgrades shown on plans are for illustration purposes only and are not included. E.&O.E.

KING'S LANDING NORTH TOWER



SUITE 02 TWO BEDROOMS

TOTAL AREA	1008 SQ.FT.
808 SQ.FT. INDOOR AREA	200 SQ.FT. OUTDOOR AREA

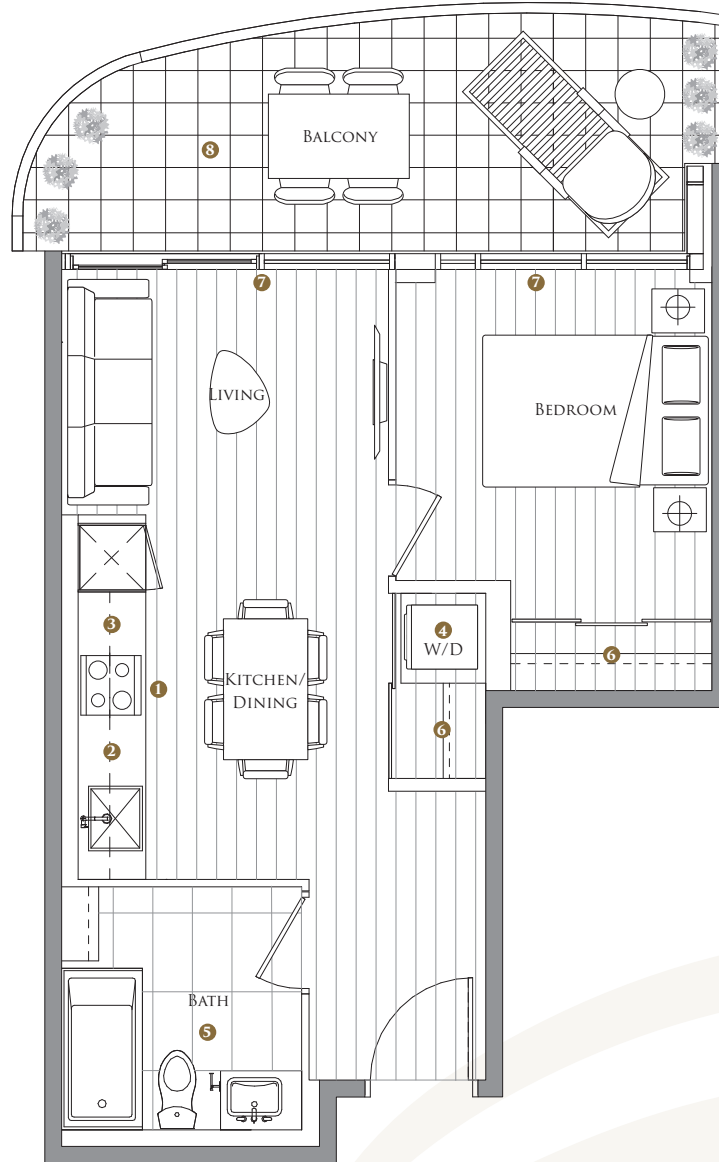


FEATURE HIGHLIGHTS

- 1 MIELE APPLIANCES
- 2 KITCHEN STORAGE ORGANIZER
- 3 BLUM KITCHEN HARDWARE
- 4 MIELE WASHER/DRYER
- 5 KOHLER/GROHE BATHROOM PLUMBING FIXTURES
- 6 CLOSET ORGANIZER SYSTEM
- 7 ROLLER - SHADES
- 8 COMPOSITE WOOD DECKING
- 9 WINE CELLAR

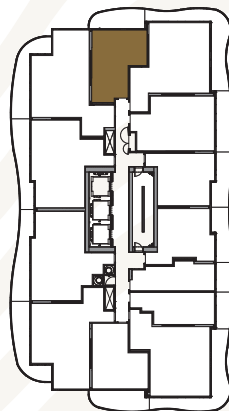
The developer reserves the right to make minor revisions to interior wall locations and exterior window system. All materials and drawings are approximate. Information is subject to change without notice. Actual square footage may vary from the stated floorplan. Furniture and upgrades shown on plans are for illustration purposes only and are not included. E.&O.E.

KING'S LANDING NORTH TOWER



SUITE 03 ONE BEDROOM

TOTAL AREA 625 SQ.FT.	
490 SQ.FT. INDOOR AREA	135 SQ.FT. OUTDOOR AREA

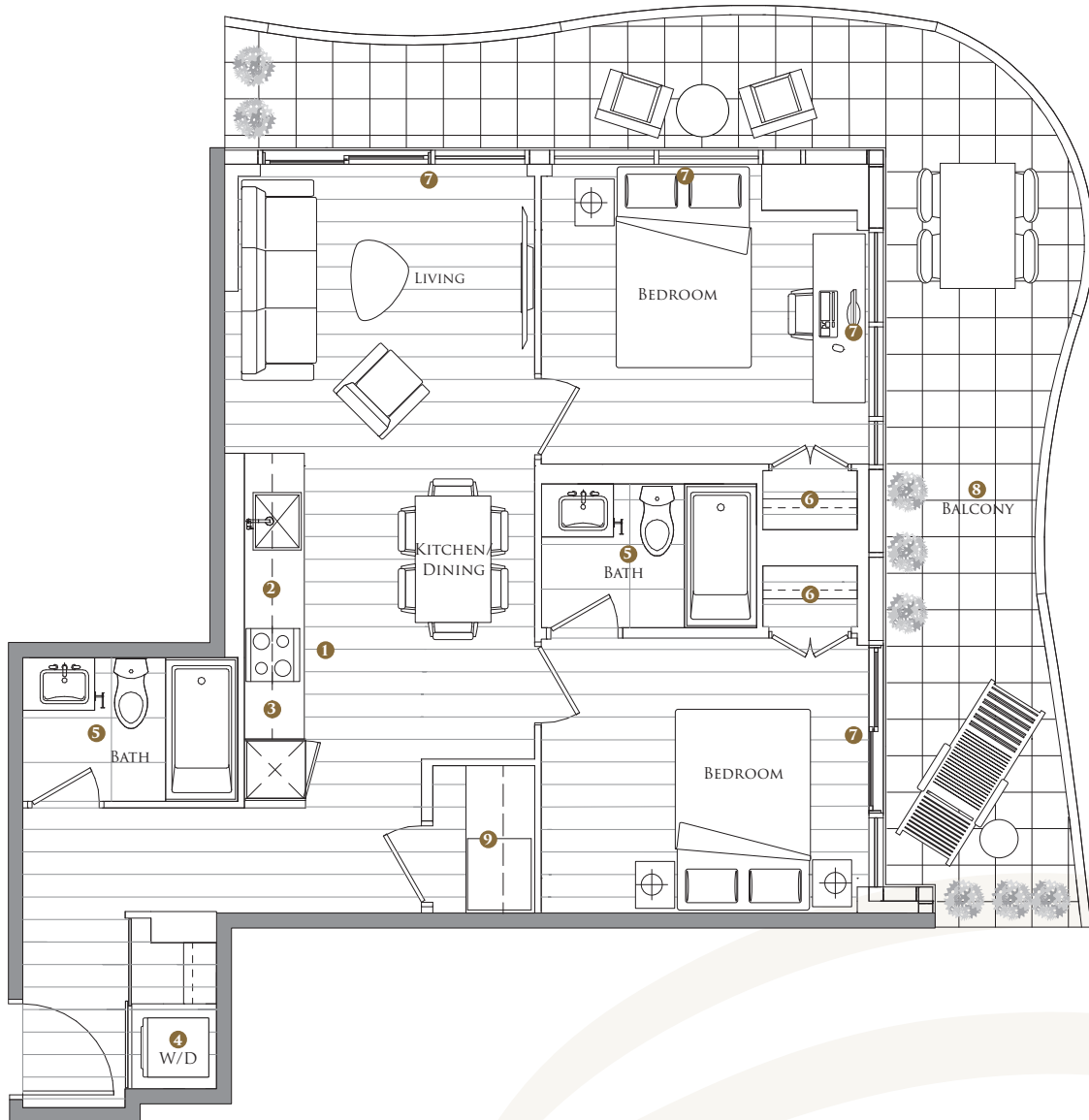


FEATURE HIGHLIGHTS

- 1 MIELE APPLIANCES
- 2 KITCHEN STORAGE ORGANIZER
- 3 BLUM KITCHEN HARDWARE
- 4 MIELE WASHER/DRYER
- 5 KOHLER/GROHE BATHROOM PLUMBING FIXTURES
- 6 CLOSET ORGANIZER SYSTEM
- 7 ROLLER - SHADES
- 8 COMPOSITE WOOD DECKING

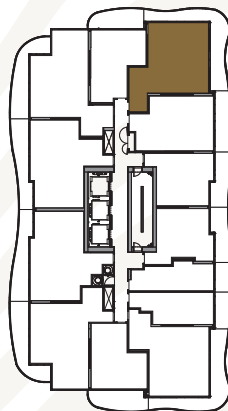
The developer reserves the right to make minor revisions to interior wall locations and exterior window system. All materials and drawings are approximate. Information is subject to change without notice. Actual square footage may vary from the stated floorplan. Furniture and upgrades shown on plans are for illustration purposes only and are not included. E.&O.E.

KING'S LANDING NORTH TOWER



SUITE 05 TWO BEDROOMS

TOTAL AREA	1030 SQ.FT.
760 SQ.FT. INDOOR AREA	270 SQ.FT. OUTDOOR AREA



FEATURE HIGHLIGHTS

- 1 MIELE APPLIANCES
- 2 KITCHEN STORAGE ORGANIZER
- 3 BLUM KITCHEN HARDWARE
- 4 MIELE WASHER/DRYER
- 5 KOHLER/GROHE BATHROOM PLUMBING FIXTURES
- 6 CLOSET ORGANIZER SYSTEM
- 7 ROLLER - SHADES
- 8 COMPOSITE WOOD DECKING
- 9 WINE CELLAR

The developer reserves the right to make minor revisions to interior wall locations and exterior window system. All materials and drawings are approximate. Information is subject to change without notice. Actual square footage may vary from the stated floorplan. Furniture and upgrades shown on plans are for illustration purposes only and are not included. E.&O.E.



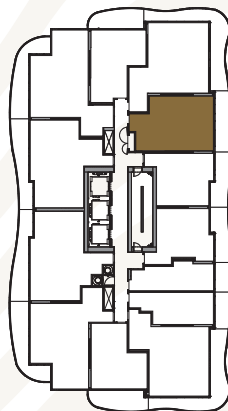
KING'S LANDING NORTH TOWER



SUITE 06

ONE BEDROOM + DEN

TOTAL AREA 745 SQ.FT.	
618 SQ.FT. INDOOR AREA	127 SQ.FT. OUTDOOR AREA

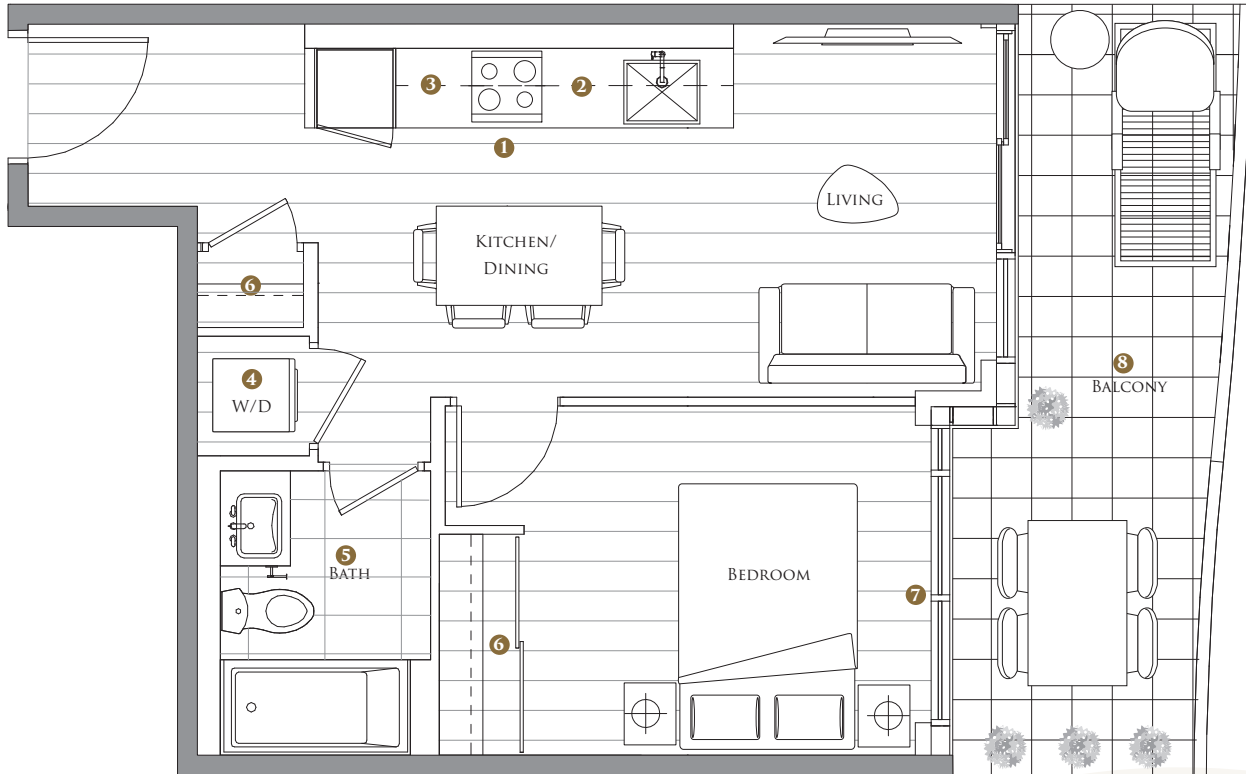


FEATURE HIGHLIGHTS

- 1 MIELE APPLIANCES
- 2 KITCHEN STORAGE ORGANIZER
- 3 BLUM KITCHEN HARDWARE
- 4 MIELE WASHER/DRYER
- 5 KOHLER/GROHE BATHROOM PLUMBING FIXTURES
- 6 CLOSET ORGANIZER SYSTEM
- 7 ROLLER - SHADES
- 8 COMPOSITE WOOD DECKING

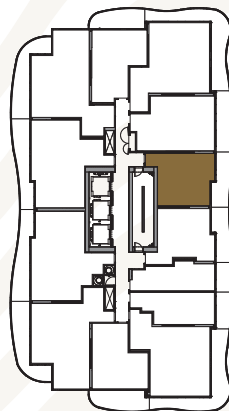
The developer reserves the right to make minor revisions to interior wall locations and exterior window system. All materials and drawings are approximate. Information is subject to change without notice. Actual square footage may vary from the stated floorplan. Furniture and upgrades shown on plans are for illustration purposes only and are not included. E.&O.E.

KING'S LANDING NORTH TOWER



SUITE 07 ONE BEDROOM

TOTAL AREA 600 SQ.FT.	
478 SQ.FT. INDOOR AREA	122 SQ.FT. OUTDOOR AREA

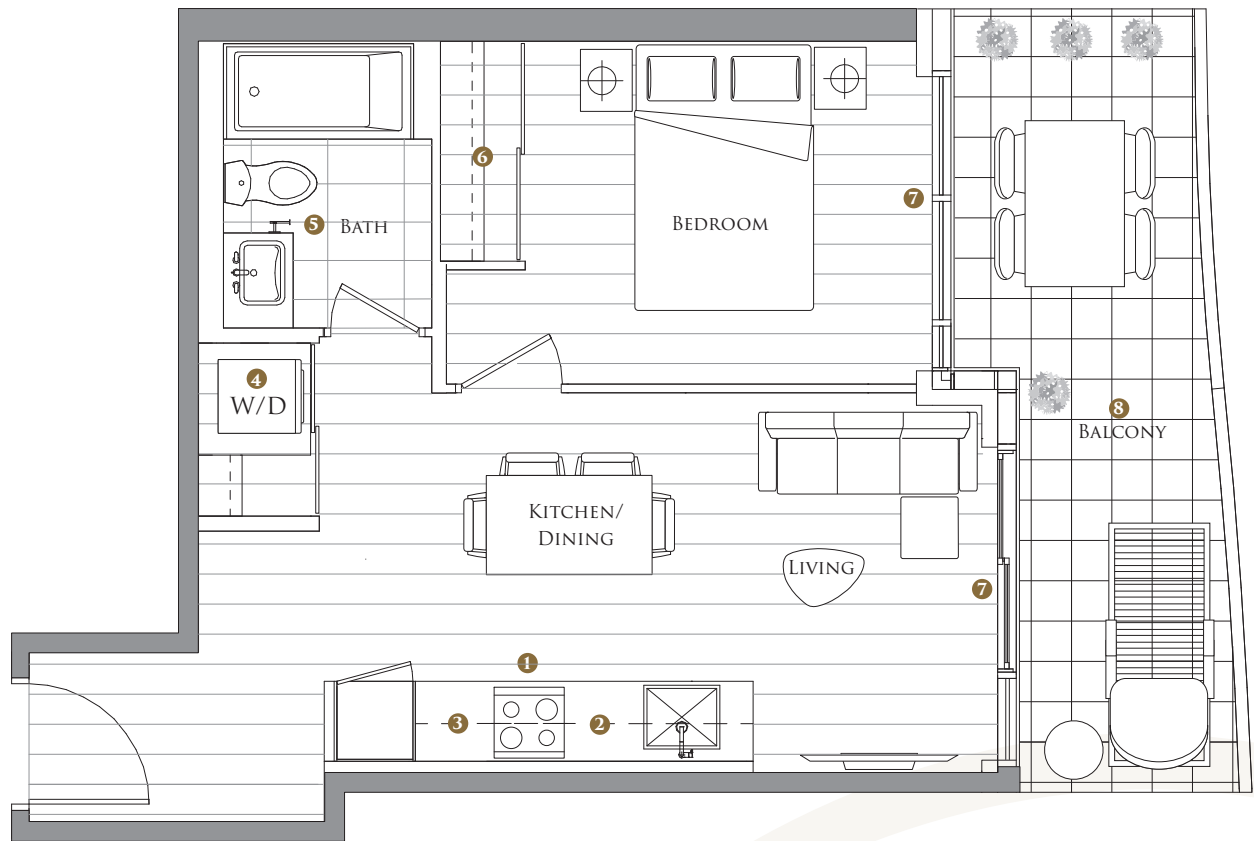


FEATURE HIGHLIGHTS

- 1 MIELE APPLIANCES
- 2 KITCHEN STORAGE ORGANIZER
- 3 BLUM KITCHEN HARDWARE
- 4 MIELE WASHER/DRYER
- 5 KOHLER/GROHE BATHROOM PLUMBING FIXTURES
- 6 CLOSET ORGANIZER SYSTEM
- 7 ROLLER - SHADES
- 8 COMPOSITE WOOD DECKING

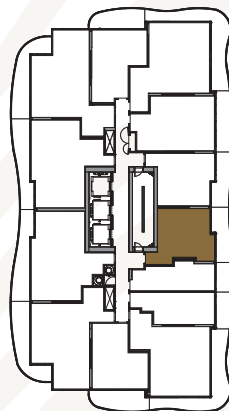
The developer reserves the right to make minor revisions to interior wall locations and exterior window system. All materials and drawings are approximate. Information is subject to change without notice. Actual square footage may vary from the stated floorplan. Furniture and upgrades shown on plans are for illustration purposes only and are not included. E.&O.E.

KING'S LANDING NORTH TOWER



SUITE 08 ONE BEDROOM

TOTAL AREA 605 SQ.FT.	
485 SQ.FT. INDOOR AREA	120 SQ.FT. OUTDOOR AREA

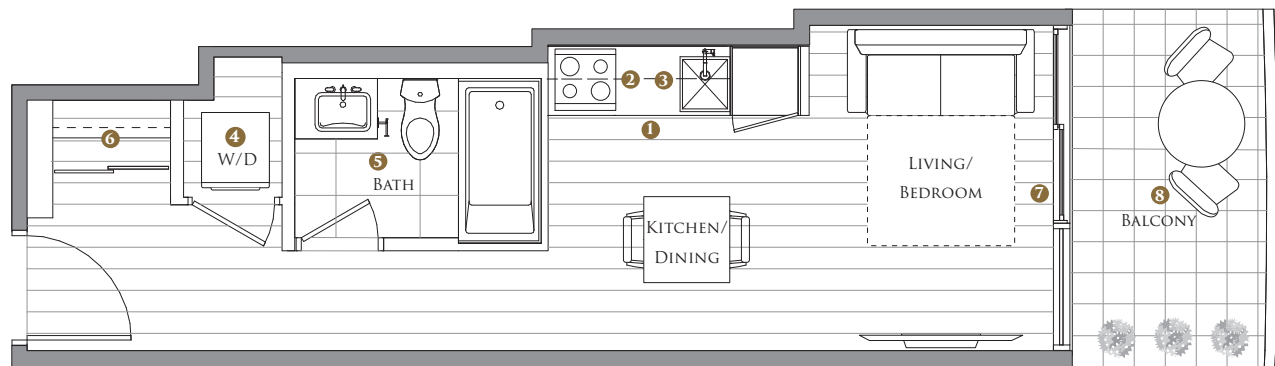


FEATURE HIGHLIGHTS

- 1 MIELE APPLIANCES
- 2 KITCHEN STORAGE ORGANIZER
- 3 BLUM KITCHEN HARDWARE
- 4 MIELE WASHER/DRYER
- 5 KOHLER/GROHE BATHROOM PLUMBING FIXTURES
- 6 CLOSET ORGANIZER SYSTEM
- 7 ROLLER - SHADES
- 8 COMPOSITE WOOD DECKING

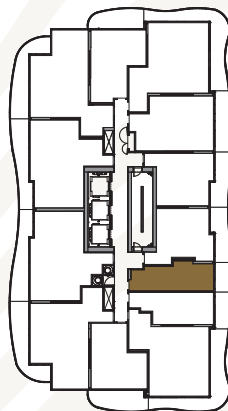
The developer reserves the right to make minor revisions to interior wall locations and exterior window system. All materials and drawings are approximate. Information is subject to change without notice. Actual square footage may vary from the stated floorplan. Furniture and upgrades shown on plans are for illustration purposes only and are not included. E.&O.E.

KING'S LANDING NORTH TOWER



SUITE 09 JUNIOR ONE BEDROOM

TOTAL AREA 388 SQ.FT.	
325 SQ.FT. INDOOR AREA	63 SQ.FT. OUTDOOR AREA



FEATURE HIGHLIGHTS

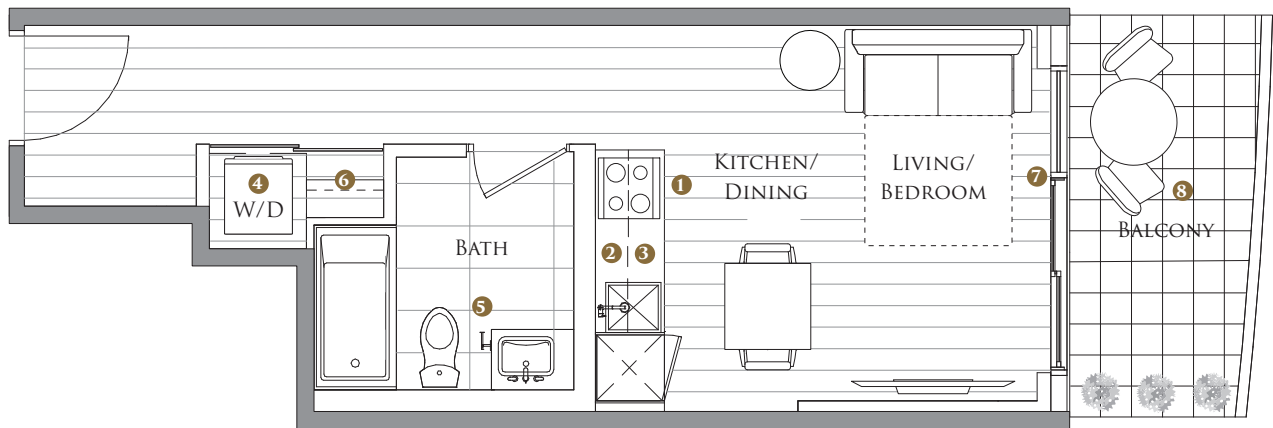
- 1 MIELE APPLIANCES
- 2 KITCHEN STORAGE ORGANIZER
- 3 BLUM KITCHEN HARDWARE
- 4 MIELE WASHER/DRYER
- 5 KOHLER/GROHE BATHROOM PLUMBING FIXTURES
- 6 CLOSET ORGANIZER SYSTEM
- 7 ROLLER - SHADES
- 8 COMPOSITE WOOD DECKING

The developer reserves the right to make minor revisions to interior wall locations and exterior window system. All materials and drawings are approximate. Information is subject to change without notice. Actual square footage may vary from the stated floorplan. Furniture and upgrades shown on plans are for illustration purposes only and are not included. E.&O.E.



KING'S LANDING

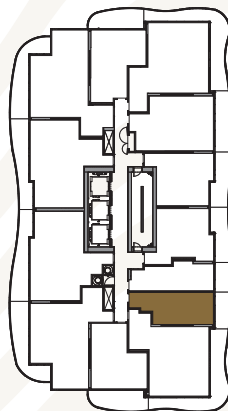
NORTH TOWER



SUITE 10

JUNIOR ONE BEDROOM

TOTAL AREA 425 SQ.FT.	
351 SQ.FT. INDOOR AREA	74 SQ.FT. OUTDOOR AREA



FEATURE HIGHLIGHTS

- 1 MIELE APPLIANCES
- 2 KITCHEN STORAGE ORGANIZER
- 3 BLUM KITCHEN HARDWARE
- 4 MIELE WASHER/DRYER
- 5 KOHLER/GROHE BATHROOM PLUMBING FIXTURES
- 6 CLOSET ORGANIZER SYSTEM
- 7 ROLLER - SHADES
- 8 COMPOSITE WOOD DECKING

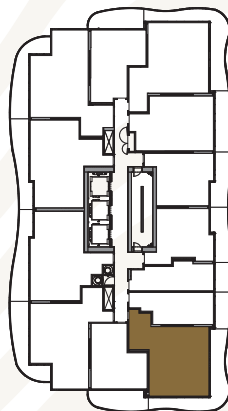
The developer reserves the right to make minor revisions to interior wall locations and exterior window system. All materials and drawings are approximate. Information is subject to change without notice. Actual square footage may vary from the stated floorplan. Furniture and upgrades shown on plans are for illustration purposes only and are not included. E.&O.E.

KING'S LANDING NORTH TOWER



SUITE 11 TWO BEDROOMS

TOTAL AREA	1010 SQ.FT.
738 SQ.FT. INDOOR AREA	272 SQ.FT. OUTDOOR AREA

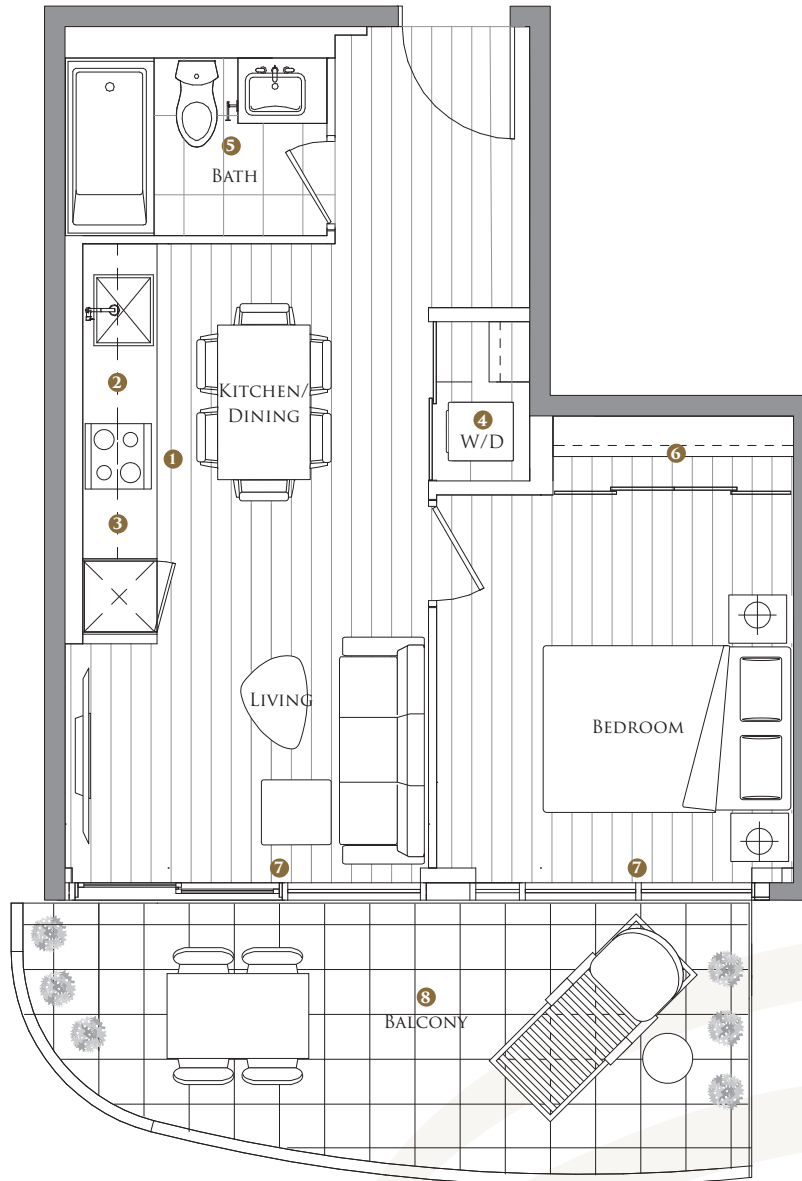


FEATURE HIGHLIGHTS

- 1 MIELE APPLIANCES
- 2 KITCHEN STORAGE ORGANIZER
- 3 BLUM KITCHEN HARDWARE
- 4 MIELE WASHER/DRYER
- 5 KOHLER/GROHE BATHROOM PLUMBING FIXTURES
- 6 CLOSET ORGANIZER SYSTEM
- 7 ROLLER - SHADES
- 8 COMPOSITE WOOD DECKING
- 9 WINE CELLAR

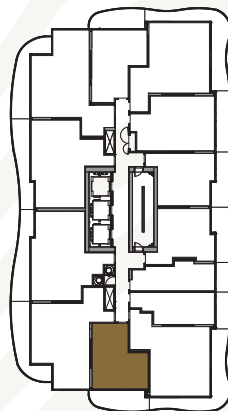
The developer reserves the right to make minor revisions to interior wall locations and exterior window system. All materials and drawings are approximate. Information is subject to change without notice. Actual square footage may vary from the stated floorplan. Furniture and upgrades shown on plans are for illustration purposes only and are not included. E.&O.E.

KING'S LANDING NORTH TOWER



SUITE 12 ONE BEDROOM

TOTAL AREA 608 SQ.FT.	
460 SQ.FT. INDOOR AREA	148 SQ.FT. OUTDOOR AREA

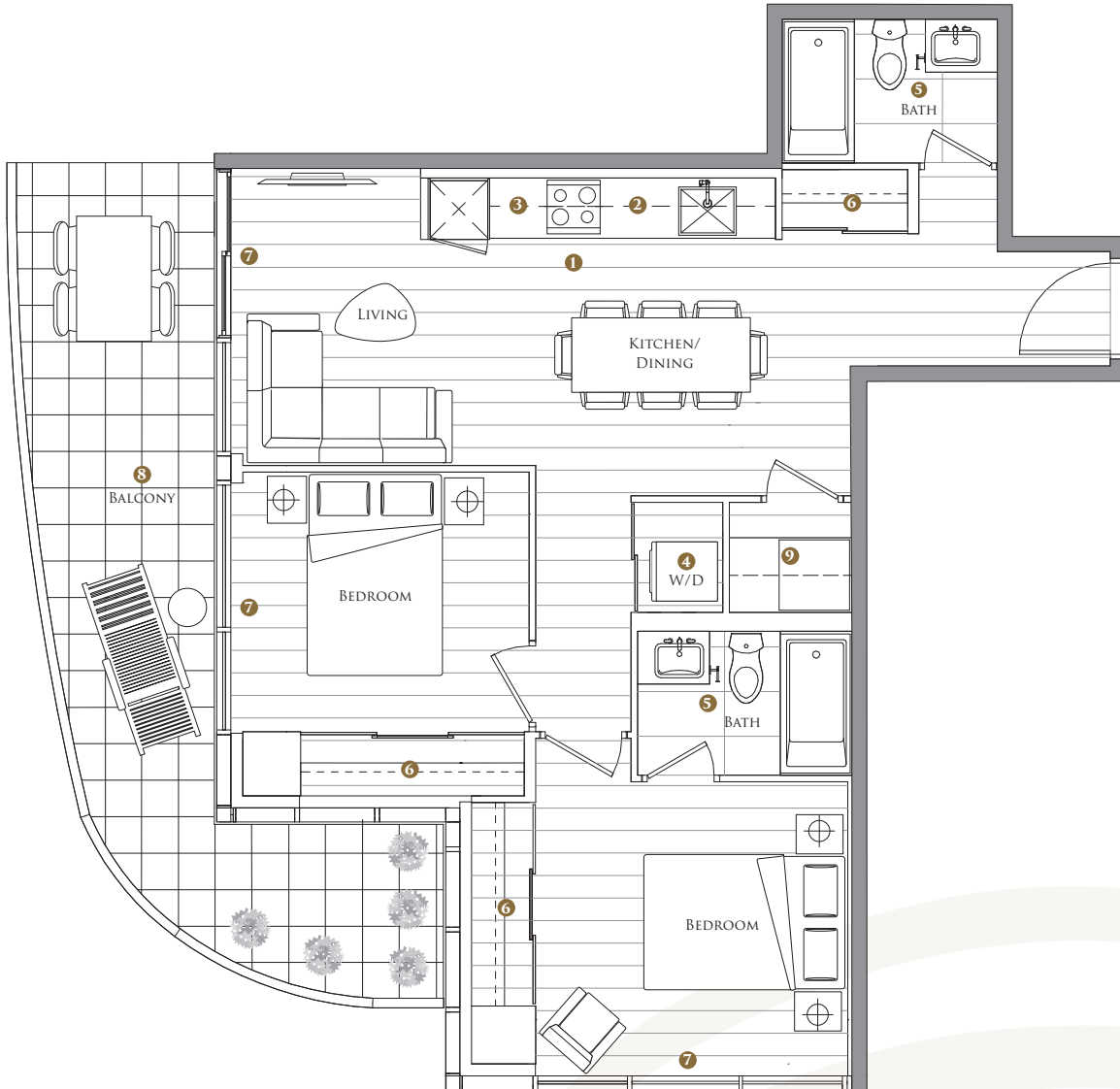


FEATURE HIGHLIGHTS

- 1 MIELE APPLIANCES
- 2 KITCHEN STORAGE ORGANIZER
- 3 BLUM KITCHEN HARDWARE
- 4 MIELE WASHER/DRYER
- 5 KOHLER/GROHE BATHROOM PLUMBING FIXTURES
- 6 CLOSET ORGANIZER SYSTEM
- 7 ROLLER - SHADES
- 8 COMPOSITE WOOD DECKING

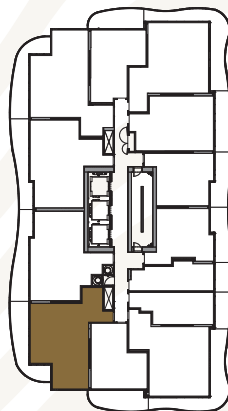
The developer reserves the right to make minor revisions to interior wall locations and exterior window system. All materials and drawings are approximate. Information is subject to change without notice. Actual square footage may vary from the stated floorplan. Furniture and upgrades shown on plans are for illustration purposes only and are not included. E.&O.E.

KING'S LANDING NORTH TOWER



SUITE 15 TWO BEDROOMS

TOTAL AREA 978 SQ.FT.	
780 SQ.FT. INDOOR AREA	198 SQ.FT. OUTDOOR AREA



FEATURE HIGHLIGHTS

- 1 MIELE APPLIANCES
- 2 KITCHEN STORAGE ORGANIZER
- 3 BLUM KITCHEN HARDWARE
- 4 MIELE WASHER/DRYER
- 5 KOHLER/GROHE BATHROOM PLUMBING FIXTURES
- 6 CLOSET ORGANIZER SYSTEM
- 7 ROLLER - SHADES
- 8 COMPOSITE WOOD DECKING
- 9 WINE CELLAR

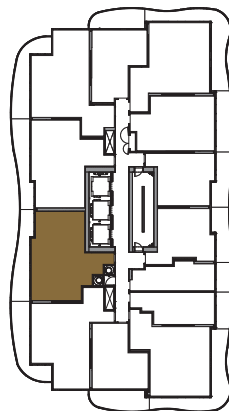
The developer reserves the right to make minor revisions to interior wall locations and exterior window system. All materials and drawings are approximate. Information is subject to change without notice. Actual square footage may vary from the stated floorplan. Furniture and upgrades shown on plans are for illustration purposes only and are not included. E.&O.E.

KING'S LANDING NORTH TOWER



SUITE 16 TWO BEDROOMS

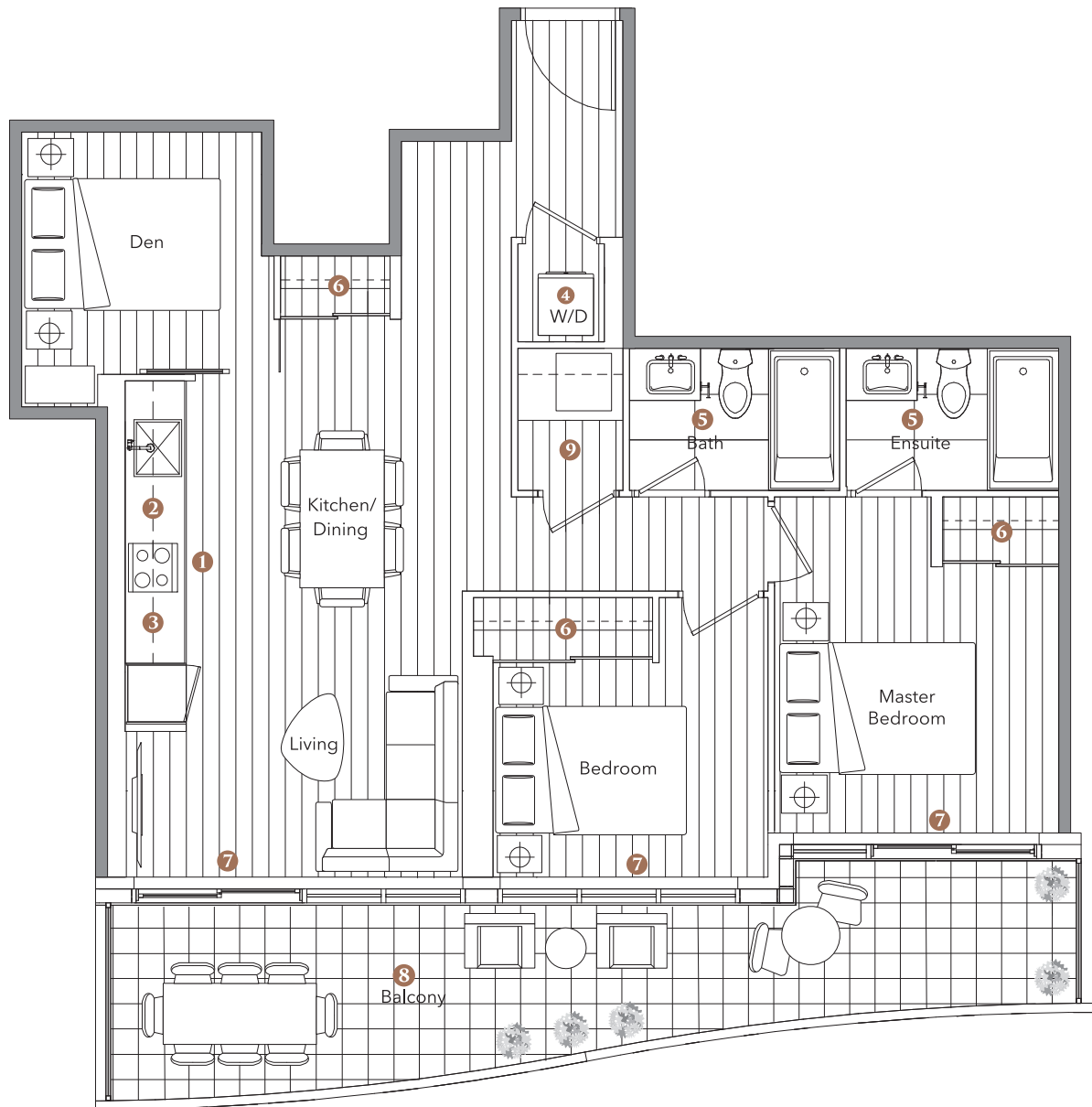
TOTAL AREA 996 SQ.FT.	
808 SQ.FT. INDOOR AREA	188 SQ.FT. OUTDOOR AREA



FEATURE HIGHLIGHTS

- 1 MIELE APPLIANCES
- 2 KITCHEN STORAGE ORGANIZER
- 3 BLUM KITCHEN HARDWARE
- 4 MIELE WASHER/DRYER
- 5 KOHLER/GROHE BATHROOM PLUMBING FIXTURES
- 6 CLOSET ORGANIZER SYSTEM
- 7 ROLLER - SHADES
- 8 COMPOSITE WOOD DECKING
- 9 WINE CELLAR

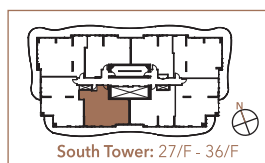
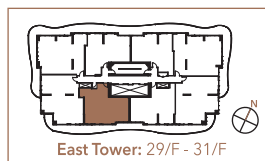
The developer reserves the right to make minor revisions to interior wall locations and exterior window system. All materials and drawings are approximate. Information is subject to change without notice. Actual square footage may vary from the stated floorplan. Furniture and upgrades shown on plans are for illustration purposes only and are not included. E.&O.E.



Suite 01

Two Bedroom + Den

TOTAL AREA	1,100 SQ.FT.
910 SQ.FT. INDOOR AREA	190 SQ.FT. OUTDOOR AREA



Feature Highlights

- 1 Miele Appliances
- 2 Kitchen Storage Organizer
- 3 Blum Kitchen Hardware
- 4 Miele Washer/Dryer
- 5 Kohler/Grohe Bathroom Plumbing Fixtures
- 6 Closet Organizer System
- 7 Roller - Shades
- 8 Composite Wood Decking
- 9 Wine Cellar



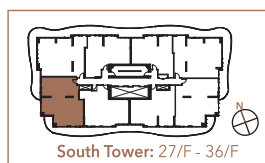
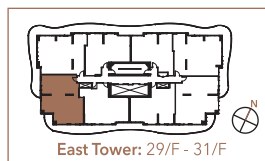
UPPER HOUSE COLLECTION



Suite 02

Three Bedroom

TOTAL AREA	1,396 SQ.FT.
1,098 SQ.FT. INDOOR AREA	298 SQ.FT. OUTDOOR AREA



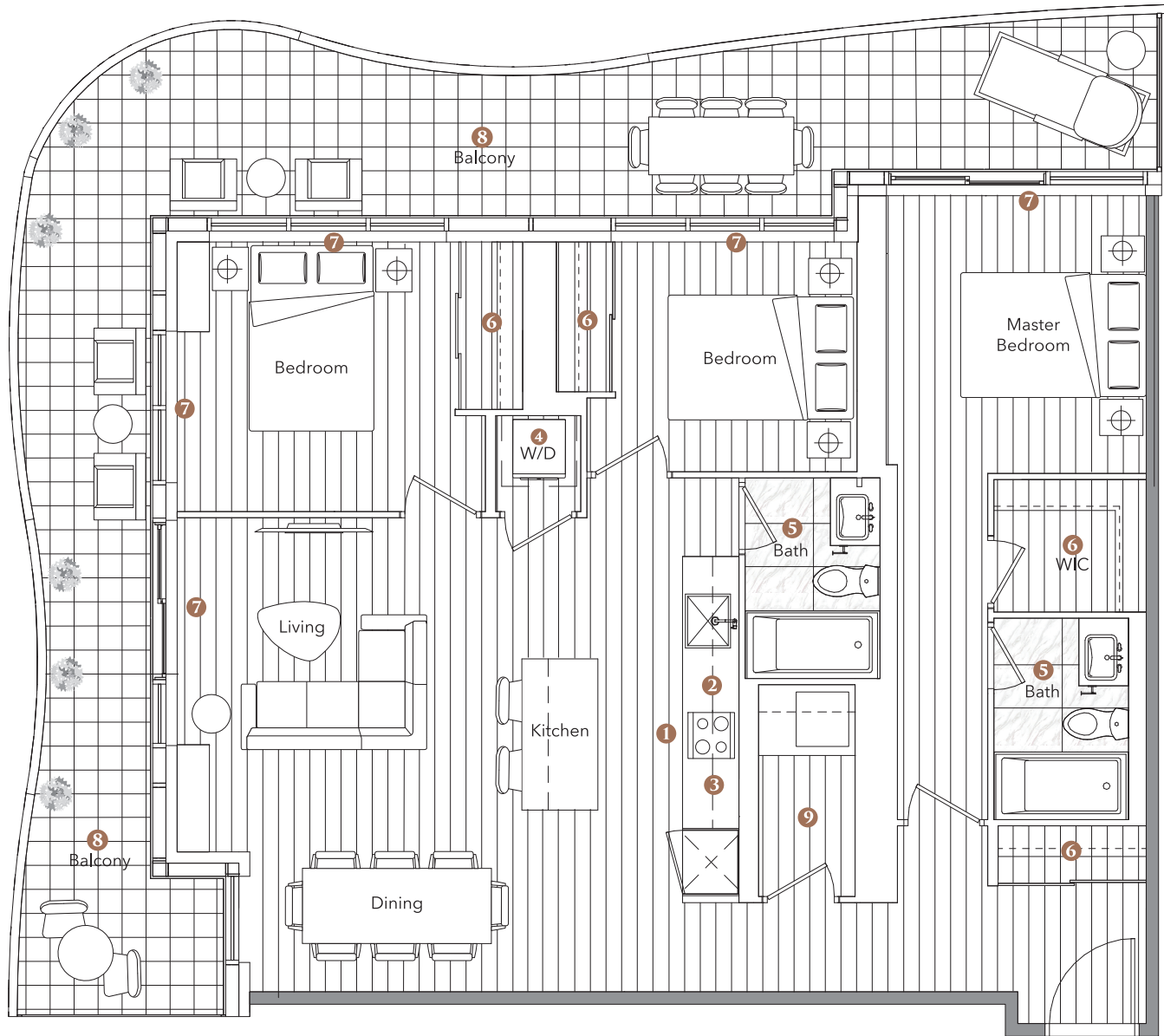
Feature Highlights

- 1 Miele Appliances
- 2 Kitchen Storage Organizer
- 3 Blum Kitchen Hardware
- 4 Miele Washer/Dryer
- 5 Kohler/Grohe Bathroom Plumbing Fixtures
- 6 Closet Organizer System
- 7 Roller - Shades
- 8 Composite Wood Decking
- 9 Wine Cellar

The developer reserves the right to make minor revisions to interior wall locations and exterior window system. All materials and drawings are approximate. Information is subject to change without notice. Actual square footage may vary from the stated floorplan. Furniture and upgrades shown on plans are for illustration purposes only and are not included. E.&O.E.



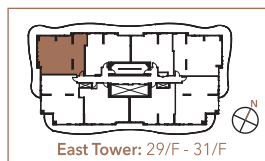
UPPER HOUSE COLLECTION



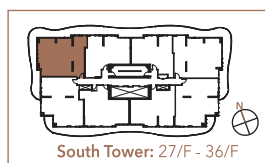
Suite 03

Three Bedrooms

TOTAL AREA	1,498 SQ.FT.
1,116 SQ.FT. INDOOR AREA	382 SQ.FT. OUTDOOR AREA



East Tower: 29/F - 31/F



South Tower: 27/F - 36/F

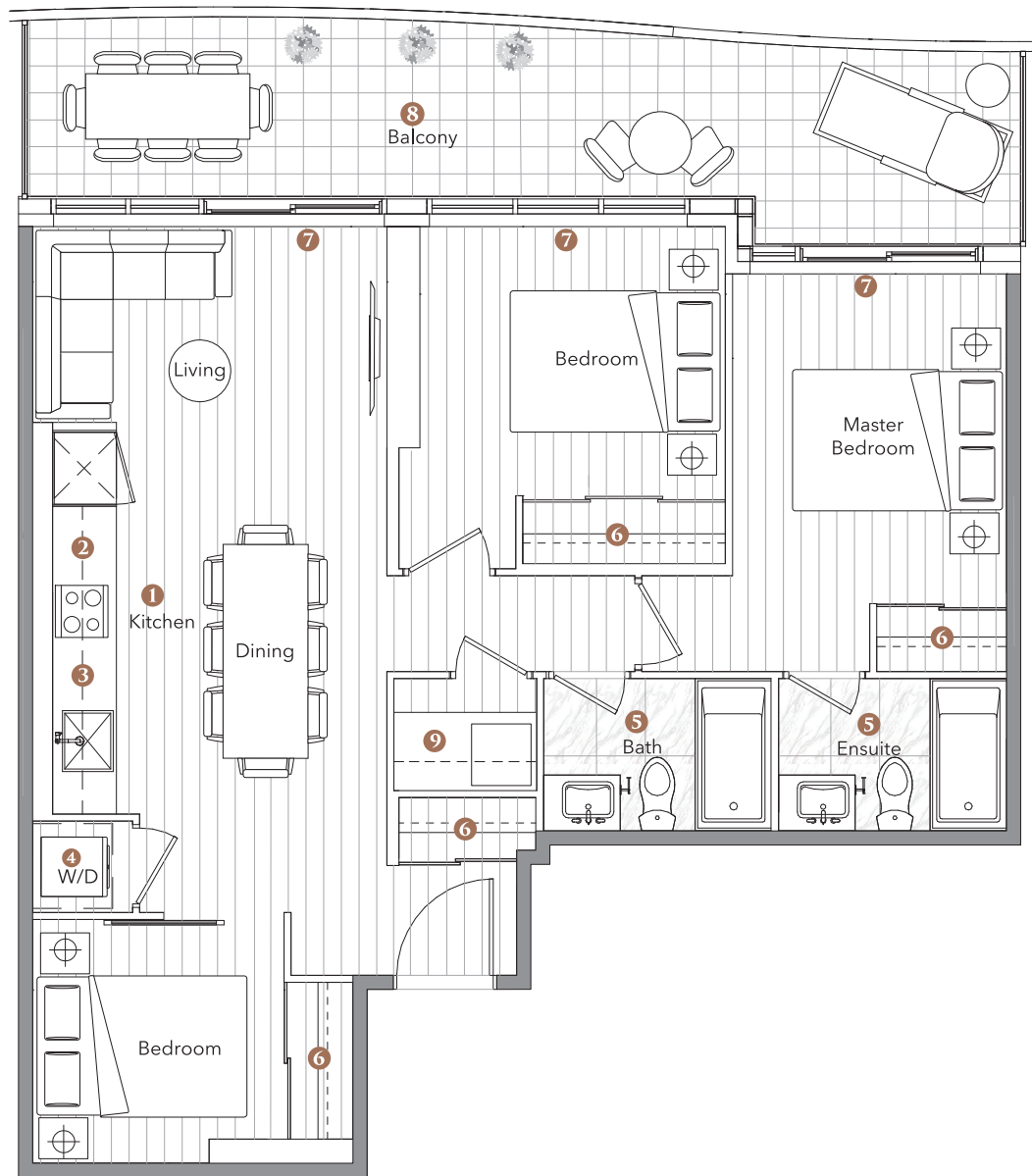
Feature Highlights

- 1 Miele Appliances
- 2 Kitchen Storage Organizer
- 3 Blum Kitchen Hardware
- 4 Miele Washer/Dryer
- 5 Kohler/Grohe Bathroom Plumbing Fixtures
- 6 Closet Organizer System
- 7 Roller - Shades
- 8 Composite Wood Decking
- 9 Wine Cellar

The developer reserves the right to make minor revisions to interior wall locations and exterior window system. All materials and drawings are approximate. Information is subject to change without notice. Actual square footage may vary from the stated floorplan. Furniture and upgrades shown on plans are for illustration purposes only and are not included. E.&O.E.



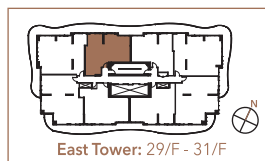
UPPER HOUSE COLLECTION



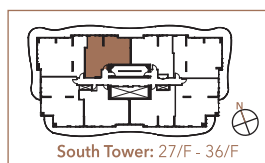
Suite 05

Three Bedrooms

TOTAL AREA	1,065 SQ.FT.
873 SQ.FT. INDOOR AREA	192 SQ.FT. OUTDOOR AREA



East Tower: 29/F - 31/F



South Tower: 27/F - 36/F

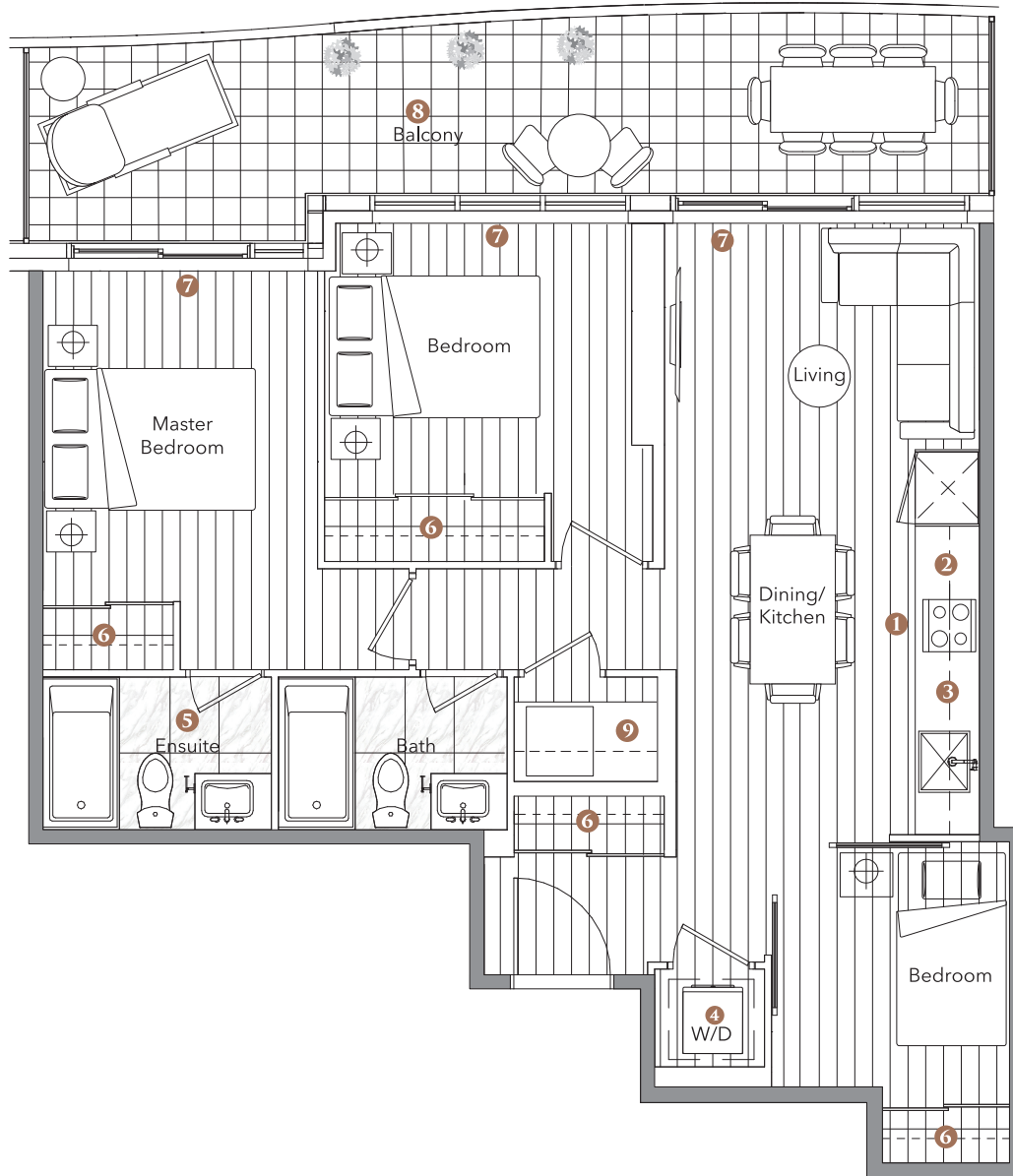
Feature Highlights

- 1 Miele Appliances
- 2 Kitchen Storage Organizer
- 3 Blum Kitchen Hardware
- 4 Miele Washer/Dryer
- 5 Kohler/Grohe Bathroom Plumbing Fixtures
- 6 Closet Organizer System
- 7 Roller - Shades
- 8 Composite Wood Decking
- 9 Wine Cellar

The developer reserves the right to make minor revisions to interior wall locations and exterior window system. All materials and drawings are approximate. Information is subject to change without notice. Actual square footage may vary from the stated floorplan. Furniture and upgrades shown on plans are for illustration purposes only and are not included. E.&O.E.



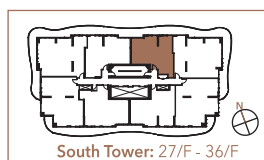
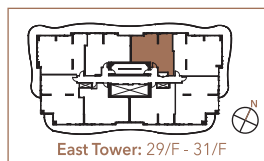
UPPER HOUSE COLLECTION



Suite 06

Three Bedrooms

TOTAL AREA	1,025 SQ.FT.
838 SQ.FT. INDOOR AREA	187 SQ.FT. OUTDOOR AREA



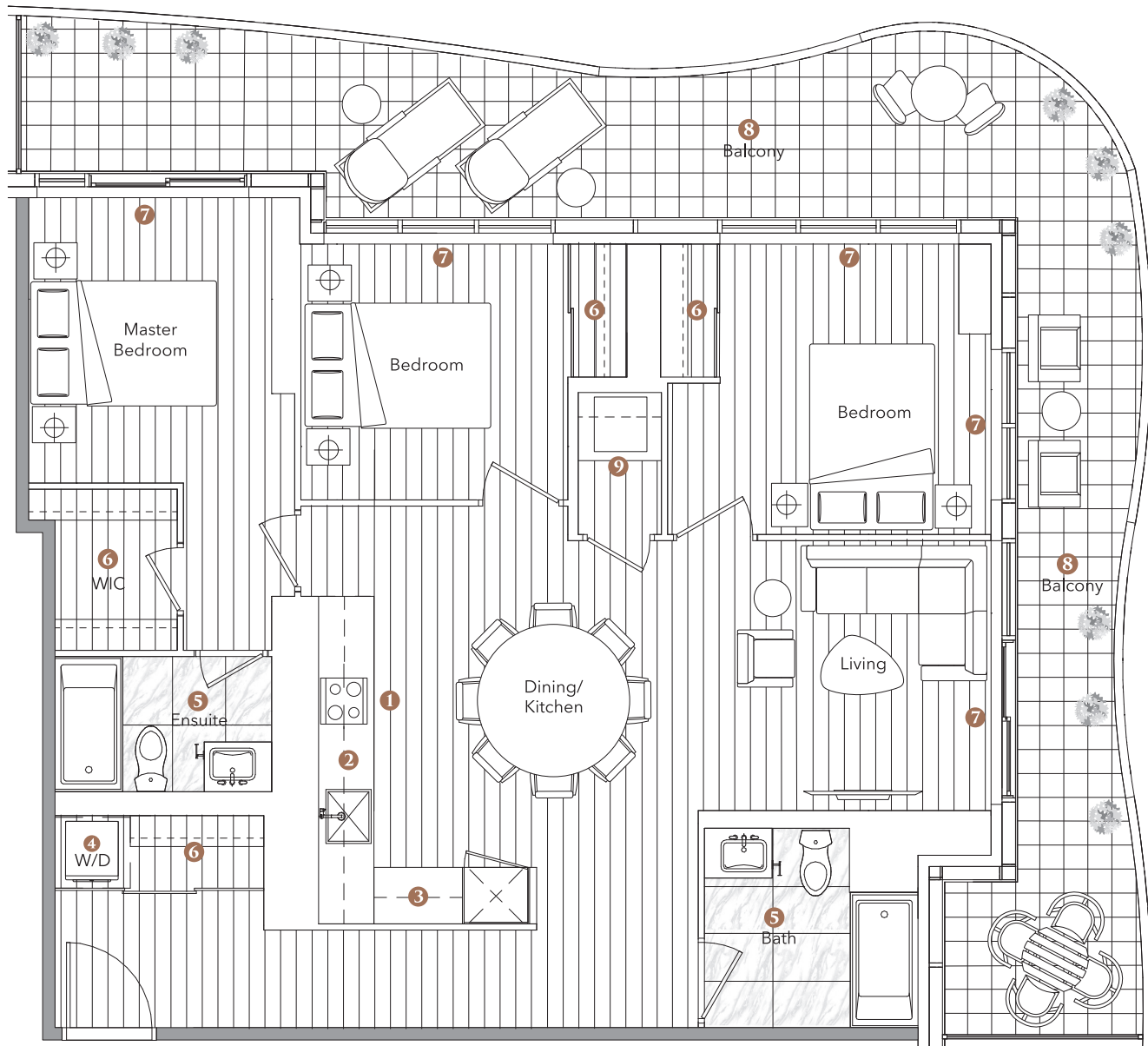
Feature Highlights

- 1 Miele Appliances
- 2 Kitchen Storage Organizer
- 3 Blum Kitchen Hardware
- 4 Miele Washer/Dryer
- 5 Kohler/Grohe Bathroom Plumbing Fixtures
- 6 Closet Organizer System
- 7 Roller - Shades
- 8 Composite Wood Decking
- 9 Wine Cellar

The developer reserves the right to make minor revisions to interior wall locations and exterior window system. All materials and drawings are approximate. Information is subject to change without notice. Actual square footage may vary from the stated floorplan. Furniture and upgrades shown on plans are for illustration purposes only and are not included. E.&O.E.



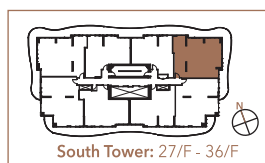
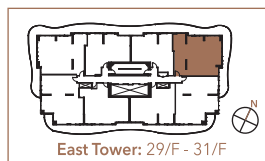
UPPER HOUSE COLLECTION



Suite 07

Three Bedrooms

TOTAL AREA	1,498 SQ.FT.
1,122 SQ.FT. INDOOR AREA	376 SQ.FT. OUTDOOR AREA



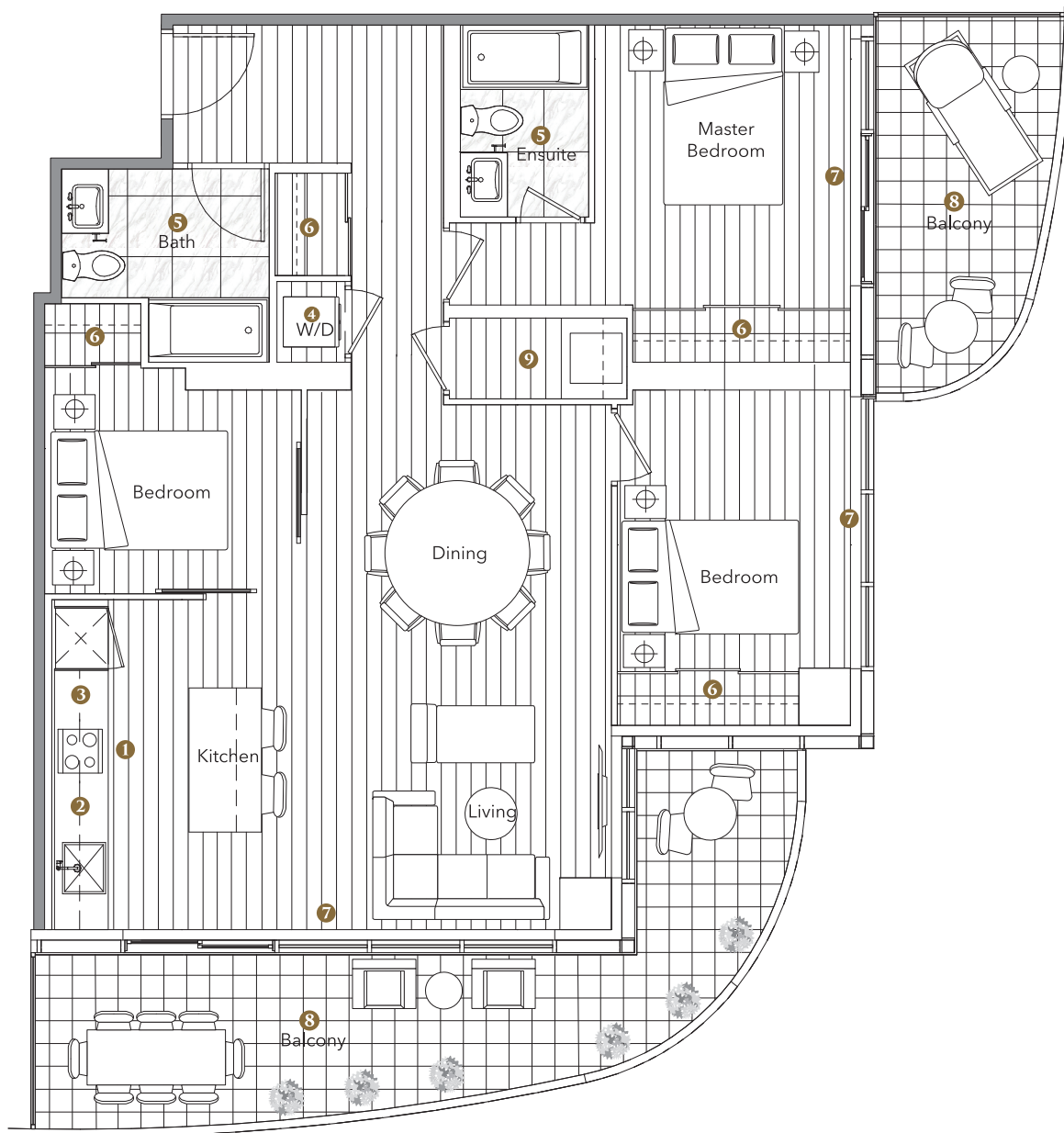
Feature Highlights

- 1 Miele Appliances
- 2 Kitchen Storage Organizer
- 3 Blum Kitchen Hardware
- 4 Miele Washer/Dryer
- 5 Kohler/Grohe Bathroom Plumbing Fixtures
- 6 Closet Organizer System
- 7 Roller - Shades
- 8 Composite Wood Decking
- 9 Wine Cellar

The developer reserves the right to make minor revisions to interior wall locations and exterior window system. All materials and drawings are approximate. Information is subject to change without notice. Actual square footage may vary from the stated floorplan. Furniture and upgrades shown on plans are for illustration purposes only and are not included. E.&O.E.



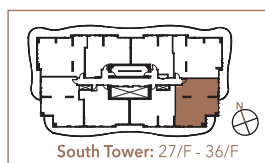
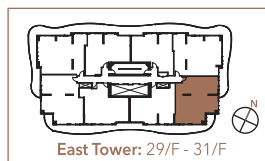
UPPER HOUSE COLLECTION



Suite 08

Three Bedrooms

TOTAL AREA	1,403 SQ.FT.
1,113 SQ.FT. INDOOR AREA	290 SQ.FT. OUTDOOR AREA



Feature Highlights

- 1 Miele Appliances
- 2 Kitchen Storage Organizer
- 3 Blum Kitchen Hardware
- 4 Miele Washer/Dryer
- 5 Kohler/Grohe Bathroom Plumbing Fixtures
- 6 Closet Organizer System
- 7 Roller - Shades
- 8 Composite Wood Decking
- 9 Wine Cellar

The developer reserves the right to make minor revisions to interior wall locations and exterior window system. All materials and drawings are approximate. Information is subject to change without notice. Actual square footage may vary from the stated floorplan. Furniture and upgrades shown on plans are for illustration purposes only and are not included. E.&O.E.



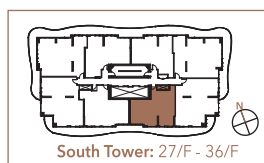
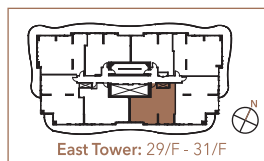
UPPER HOUSE COLLECTION



Suite 09

Three Bedrooms

TOTAL AREA	1,080 SQ.FT.
898 SQ.FT. INDOOR AREA	182 SQ.FT. OUTDOOR AREA



Feature Highlights

- 1 Miele Appliances
- 2 Kitchen Storage Organizer
- 3 Blum Kitchen Hardware
- 4 Miele Washer/Dryer
- 5 Kohler/Grohe Bathroom Plumbing Fixtures
- 6 Closet Organizer System
- 7 Roller - Shades
- 8 Composite Wood Decking
- 9 Wine Cellar

The developer reserves the right to make minor revisions to interior wall locations and exterior window system. All materials and drawings are approximate. Information is subject to change without notice. Actual square footage may vary from the stated floorplan. Furniture and upgrades shown on plans are for illustration purposes only and are not included. E.&O.E.